

**AN ANALYSIS OF SYMBOLISM FOUND IN DISNEY'S 2015**

***CINDERELLA* LIVE ACTION MOVIE**

**FINAL PROJECT**



**Presented as Partial Fulfillment of the Requirement to Obtain the *Sarjana***

***Sastra* Degree in English Literature**

**UTAMI RIZKI**

**30801600284**

**ENGLISH LITERATURE STUDY PROGRAM**

**FACULTY OF LANGUAGE AND COMMUNIATION SCIENCE**

**SULTAN AGUNG ISLAMIC UNIVERSITY**

**2022**

**APPROVAL**  
A Final Project Entitled

**AN ANALYSIS OF SYMBOLISM FOUND IN DISNEY'S 2015  
*CINDERELLA* LIVE ACTION MOVIE**

Prepared and presented by:

**UTAMI RIZKI**

**30801600284**

Has been approved by the advisor and to be examined by the Board of Examiners,

Semarang, 4<sup>th</sup> April 2022



**Diyah Fitri Wulandari, S.S., M. Hum**

Advisor

**PAGE OF VALIDATION**  
**A Final Project on**  
**AN ANALYSIS OF SYMBOLISM FOUND IN DISNEY'S 2015**  
**CINDERELLA LIVE ACTION MOVIE**

Prepared and Presented by:

**UTAMI RIZKI**

**30801600276**

**Defended before the Board of Examiners**  
**On April 21<sup>st</sup> 2022, and Declared Acceptable**  
**Board of Examiners**

**Chairman: Diah Fitri Wulandari, S.S., M.Hum**



**Secretary: Destary Praptawati, S.S., M.Hum**



**Member: Afina Murtiningrum, S.S., M.A**

**Semarang, May 31<sup>st</sup> 2022**

**Faculty of Language and Communication**  
**Science UNISSULA**

**Dean**



**Kurniawan Yudhi Nugroho, S.Pd., M.Pd**

## STATEMENT OF WORK'S ORIGINALITY

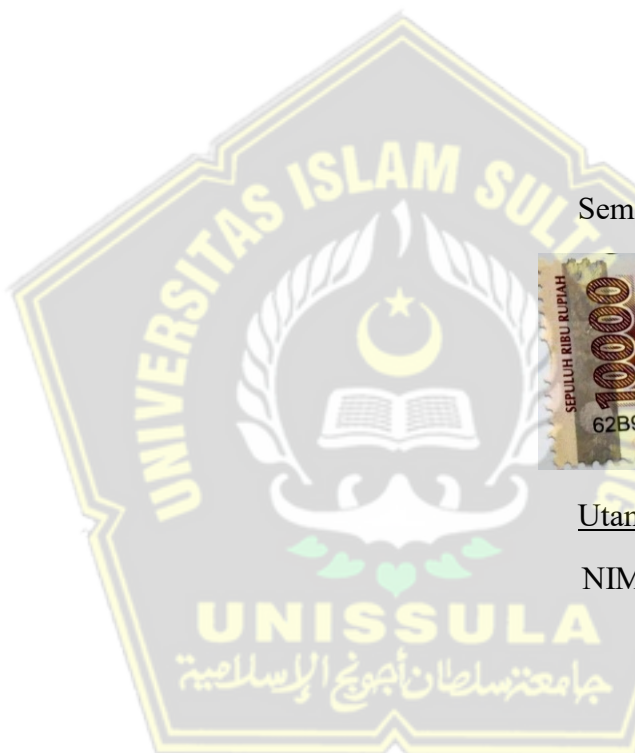
Hereby, I honestly declare that the undergraduate thesis I wrote does not contain the works or part of the works of other people, except those which were cited in the quotations and the references, as a scientific paper should. If my statement is not valid in the future, I absolutely agree to accept an academic sanction in the form of revocation of my paper and my degree obtained from that paper.

Semarang, April 4<sup>th</sup> 2022



Utami Rizki

NIM. 30801600284



## MOTTO

“Everything that I start with confidence, I must finish with pride.”

(Me)

### **DEDICATION**

This final project is for My father and mother, for my beloved sister and brother,  
for my family, and for my beloved me.

Thank you, dear self, for fighting together to get through this. Thank you, and I  
know you are stronger than this, and together we'll make it through this.



## ABSTRACT

**Rizki, Utami. 30801600284.** “An Analysis of Symbolism Found in Disney’s 2015 *Cinderella* Live Action Movie”. English Literature Study Program. Faculty of Language and Communication Sciences. Sultan Agung Islamic University. Advisor: Mrs. Diyah Fitri Wulandari, S.S., M.Hum.

*Cinderella* live action movie is a movie adaptation of the animated *Cinderella* movie, which was released by Disney in 2015. This Study presents several symbols to add deeper meaning and also add aesthetic value. This study aims at two things; the first is to identify the symbolism found in the movie, and the second is to explain the literal and literary meaning of symbolism, which occurs in the movie.

The symbolism and meaning included in the *Cinderella* movie were examined using a qualitative method. This method necessitates a number of steps in order to collect data. The first step was watched the movie numerous times, then read the script to better comprehend the plot, and last, capturing some scene from the movie that corresponds to the symbolism that will be discussed in the movie. After that, classify the data. To get a literal meaning, the data was gathered from the Oxford online dictionary. Take data from several relevant journal articles to figure out the literary meaning.

This study concludes that the *Cinderella* movie has many types of symbolism. The usage of symbolism in the *Cinderella* movie aims to add a deeper meaning. There are two types of symbolism found: colors, and animals, which are found in the *Cinderella* movie. When a movie is presented with symbolism, this indicates that in the movie there is an implied or deeper meaning than what it should be. With the presence of animal and color symbolism, there is another meaning to be conveyed to the audience from each color and animal symbolism present in the movie. Symbolism is also used to visualize various personalities and scenarios depending on the illustrations provided throughout the movie’s story.

**Keywords:** Symbolism, Color Symbolism, Animal Symbolism, Literal Meaning, Literary Meaning.

## INTISARI

**Rizki, Utami. 30801600284.** “An Analysis of Symbolism Found in Disney’s 2015 *Cinderella* Live Action Movie”. English Literature Study Program. Faculty of Language and Communication Sciences. Sultan Agung Islamic University. Advisor: Mrs. Diyah Fitri Wulandari, S.S., M.Hum.

*Cinderella* live action movie merupakan sebuah film adaptasi dari film animasi *Cinderella* yang dirilis Disney pada tahun 2015. Penelitian ini menghadirkan beberapa symbol untuk menambah makna yang lebih mendalam lagi dan juga menambah nilai estetika. Analisis ini bertujuan kepada dua hal; yang pertama adalah mengidentifikasi simbolisme yang ditemukan dalam film tersebut, dan yang kedua menjelaskan makna simbolisme secara harfiah dan sastra, yang terjadi dalam film tersebut.

Metode kualitatif digunakan untuk menganalisis simbolisme dan maknanya yang terdapat dalam film *Cinderella*. ada beberapa Langkah yang di gunakan untuk mengumpulkan data. Langkah pertama adalah menonton film berkali-kali, kemudian membaca naskah untuk lebih memahami plot, dan terakhir, menangkap beberapa adegan dari film yang sesuai dengan simbolisme yang akan dibahas dalam film. Setelah itu, mengklasifikasikan data. Untuk mendapatkan makna literal, data dikumpulkan dari kamus online Oxford. Ambil data dari beberapa artikel jurnal yang relevan untuk mengetahui makna sastra.

Penelitian ini menyimpulkan bahwa film *Cinderella* memiliki banyak jenis simbolisme. Penggunaan simbolisme dalam film *Cinderella* bertujuan untuk menambah makna yang lebih dalam. Ada dua jenis simbolisme yang ditemukan: warna, dan binatang, yang ditemukan dalam film *Cinderella*. Ketika dalam sebuah film dihadirkan simbolisme, ini menandakan bahwa dalam film tersebut terdapat makna tersirat atau yang lebih mendalam lagi dari apa yang semestinya. Dengan hadirnya simbolisme hewan dan warna, maka ada makna lain yang ingin di sampaikan kepada penonton dari setiap simbolisme warna dan hewan yang hadir dalam film tersebut. Simbolisme juga digunakan untuk memvisualisasikan berbagai kepribadian dan skenario tergantung pada ilustrasi yang diberikan sepanjang cerita film.

**Kata kunci:** Simbolisme, Simbolisme Warna, Simbolisme Hewan, Makna Harfiah, Makna Sastra.



## ACKNOWLEDGEMENT

First of all, I give my highest thanks to Allah SWT for His blessings, mercy and grace, so that I can complete this final project. This study is proposed as a final result which is a requirement for completing a Bachelor of Literature degree in the English Literature study program of Sultan Agung Islamic University. Here the author thanks:

1. Mr. Kurniawan Yudhi Nugroho, S.Pd., M.Pd., as dean of English Literature Department the Collage of Languages and Communication Science Sultan Agung Islamic University.
2. Idha Nurhamidah, S.S., M.Hum., as the head of English Literature Department of Collage of Languages and Communication Science Sultan Agung Islamic University.
3. Diyah Fitri Wulandari, S.S., M.Hum., as my respectable advisor of this final project who has given guidance and support to finish this study.
4. Thank you to myself who have struggled and persevered all this time and were finally able to finish this final project.
5. My beloved parents who have guided me all this time. Thank you for always praying for me, loving, caring, patiently waiting for the best for me, and always hoping for the best for me.
6. My lovely sister and brother who always gives me support that I could finished this final project.



7. All of my lovely friends, Arfianti, Milatina Istianah, thank you for always supporting me.

8. All 2016 batch of English Literature for their supports especially, Lulu, Rahmatika, Jihan, Redita, Ulva.

9. All my classmates of English Literature 2016 always give support and help during the study.

10. Everyone who has not been mentioned one by one.

Hopefully, this study would be useful for the readers. I realize this final project is still far from being perfectness. Thus, the researcher let every reader give critics and suggestions.

Semarang, April 4<sup>th</sup> 2022

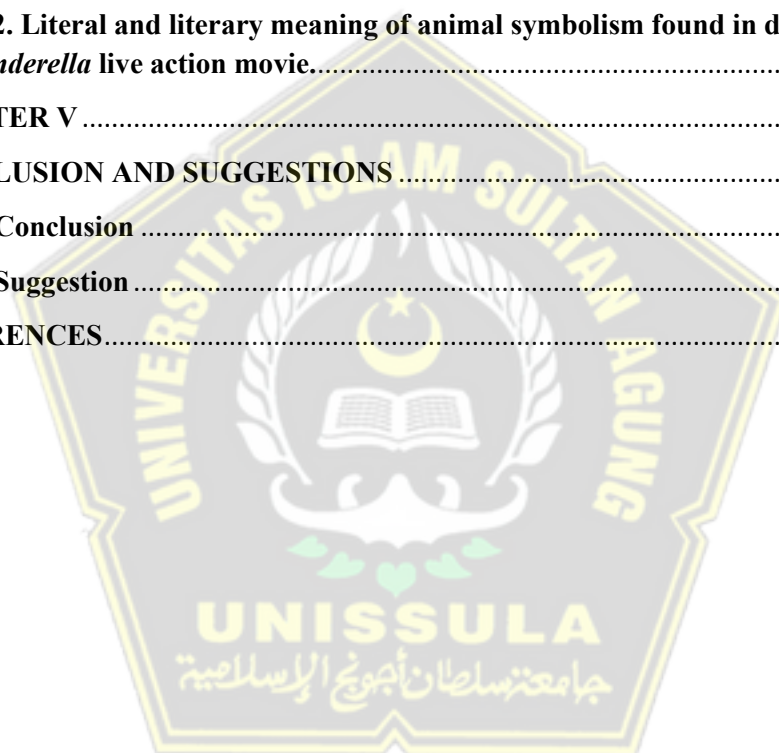


**Utami Rizki**

## TABBLE OF CONTENT

APPROVAL .....	i
PAGE OF VALIDATION .....	ii
STATEMENT OF WORK'S ORIGINALITY .....	iii
MOTTO .....	iii
DEDICATION .....	iv
ABSTRACT .....	v
INTISARI .....	vi
ACKNOWLEDGEMENT .....	vii
CHAPTER I .....	1
INTRODUCTION .....	1
A. Background of the Study .....	1
B. Limitation of the Study .....	4
C. Problem Formulation .....	5
D. Objectives of the Study .....	5
E. Significant of the Study .....	5
F. Organization of the Study .....	6
CHAPTER II .....	7
REVIEW OF RELATED LITERATURE .....	7
A. Synopsis .....	7
B. Related Literature .....	11
B.1. Symbol and Symbolism .....	11
B.2. Use symbolism in Literature .....	13
CHAPTER III .....	22
RESEARCH METHODOLOGY .....	22
A. Types of Research .....	22
B. Data Organization .....	23
B.1. Data of Collecting Method .....	23
B.2 Types of the Data .....	24
C. Analyzing Data .....	24
CHAPTER IV .....	26

<b>FINDINGS AND DISSCUSION</b> .....	26
<b>A. Kind of color and animal symbolism found in Disney’s 2015 <i>Cinderella</i> live action movie</b> .....	26
<b>A.1. Color symbolism found in Disney’s 2015 <i>Cinderella</i> live action movie</b> .....	27
<b>A.2. Animal symbolism found in Disney’s 2015 <i>Cinderella</i> live action movie</b> ...	35
<b>B. Literal and literary meaning of color and animal symbolism found in disney’s 2015 <i>Cinderella</i> live action movie</b> .....	42
<b>B.1. Literal and literary meaning of color symbolism found in disney’s 2015 cinderella live action movie</b> .....	42
<b>B.2. Literal and literary meaning of animal symbolism found in disney’s 2015 <i>Cinderella</i> live action movie</b> .....	58
<b>CHAPTER V</b> .....	68
<b>CONCLUSION AND SUGGESTIONS</b> .....	68
<b>A. Conclusion</b> .....	68
<b>B. Suggestion</b> .....	69
<b>REFERENCES</b> .....	70



## CHAPTER I

### INTRODUCTION

Chapter one is the introduction containing background of the study, limitation of the study, problem of the study, objectives of the study, significance of the study, and organization of the study.

#### A. Background of the Study

From time to time the word "literature" is a science that is difficult to define and does not have a definite meaning, because literature is a science that has a fairly broad reach. Literature itself is also a place to express human emotions and thoughts in written works and visuals, as explained by Kwang-Su in his writing, "Literature is difficult to define since its reach is vast and its boundaries are unbounded" (249). It's probably accurate to say that it's a near-impossible task. Literature is unquestionably referred to as a field of study. As a result, some literary scholars might say, "Literature is a style of expression that embodies human emotions and concepts in certain forms" (Kwang-Su 249).

However, in general, not all written works and a recording of an event or incident are referred to as literary works. Even though they are both written and the same in the form of a video recording, science and short stories are clearly different. Because the literary work has a deep sense of leading the reader to feel what emotions the writer conveys in the story. Whereas science is a written result the observations which has definite knowledge and formulas and refers to the formulas and objectives of the observations.

Kwang- Su also explained that “We investigate the material aspect of things objectively in science, but literature provokes sensations of beauty, ugliness, happiness, and misery, making us feel as if we are reading the depths of our own brains. Literature is defined by this diversity of emotions.” (Kwang-Su 294). As explained by Kwang-Su above that writing in literature aims to lead readers or connoisseurs of literature to feel, beauty, emotion, sadness and happiness, in other words literature is the emotion of the human soul itself. “As I previously stated, literature satisfies human emotions. "This fulfillment is founded on interest, and what people are most interested in are aspects of themselves” (Kwang-Su 296).

Meanwhile, to enhance the beauty of a literary work, frequently employs symbolism to expand the meaning of the work, as Ivan Ostashchuk explains in his journal: "Symbol is a high-frequency polysemantic word" (Ostashchuk 89). Symbolism can take the form of an item, something in a character's environment in a story, or a situation. Films is a literary work that often use symbolism to add an aesthetic impression and can give a deeper meaning. As Fadaee explains that symbolism can be people, situations, actions, and usually animals or colors "A literary symbol is something that has a deeper meaning than its literal meaning. It's a thing, a person, a situation, an action, or anything else in the story that has a literal meaning but also suggests or represents other meanings" (Fadaee 21). From this statement, it can be concluded that symbolism in a story or literary work can provide a deeper meaning, not only literal meaning but also literary meaning.

The use of symbolism in a literary work emphasizes that a literary work has a literary meaning in addition to its literal meaning, as Fadaee wrote, "It is a kind

of figures of speech used for increasing the beauty of the text and has figurative meaning besides its literal meaning" (fadaee 21). The use of animal symbols and color symbols often appears in a film, to add deeper meaning to the film. "Coelho uses these symbols in order to convey the mystical message that is as applicable to real life as it is to the fictional characters" (Lakshmi et al 308). Animal symbolism that is presented in a novel or other literary work is a connecting way that can make it easier for readers to understand the character "These animal symbols are like vehicles to the reader through which to better comprehend the experiences of his characters. With his symbols, Coelho's themes are glorified with colour and clarity. Paulo Coelho has very thoughtfully incorporated the symbols in his novels. Each animal symbol mirrors the weak or the dynamic characteristic feature of human beings" (Lakshmi et al 313) .

Meanwhile, in a literary work, especially a movie, there is also the use of color symbolism that often appears to make the film more interesting and add deeper meaning. "Color is a form of non-verbal communication. Each color has many aspects to it. It is not a static energy and its meaning can change from one day to the next with any individual - it all depends on what energy they are expressing at that point in time" (Tavaragi et al). From this explanation, it can be concluded that the use of color symbolism can give the impression of a role or character in a movie. The color itself is a form of non-verbal communication that can be seen in a movie, meaning that with the presence of the use of color symbolism, the audience or literary connoisseur can easily find out the characteristics of the character in the

movie, by looking at the color of clothes or items that are often used by the character.

One of the popular movie from time to time that uses symbolism in building its story is *Cinderella*, this movie presents several symbolisms, including color and animal symbolism. In the story, Cinderella lives happily with her father and mother, but after her mother dies, Cinderella's life is very different, her father remarries. At the beginning of the marriage, Cinderella's stepmother loves Cinderella, but her two stepsisters are jealous of Cinderella's beauty. One day, my father went to work, but a few days later Ella got the news that his father had died. After her father died, Ella was treated like a maid in her own house, she had no friends and no time to play. He only makes friends with animals around his house, such as mouse, geese and others. And at the end of the story, Cinderella married the prince, Cinderella finally got happiness again. From the explanation above, this analysis will focus on the symbolism and meaning of color symbolism and animal symbolism found in *Cinderella* movie 2015.

## **B. Limitation of the Study**

The study limitation in this study focuses on identification of Color symbolism and Animal symbolism in *Cinderella* movie. Then, this study also focuses on literal and literary meaning of color and animal symbolism found in in Disney's 2015 *Cinderella* live action movie



### C. Problem Formulation

Based on the background of the study and the limitation of the study, the problem formulations are:

1. What kind of color and animal symbolism found in Disney's 2015 *Cinderella* live action movie?
2. What are the literal and literary meaning of the color symbolism and animal symbolism found in Disney's 2015 *Cinderella* live action movie?

### D. Objectives of the Study

1. To identify the symbolism found in Disney's 2015 *Cinderella* live action movie.
2. To explain the Literal and Literary meaning of color and animal symbolism found in Disney's 2015 *Cinderella* live action movie.

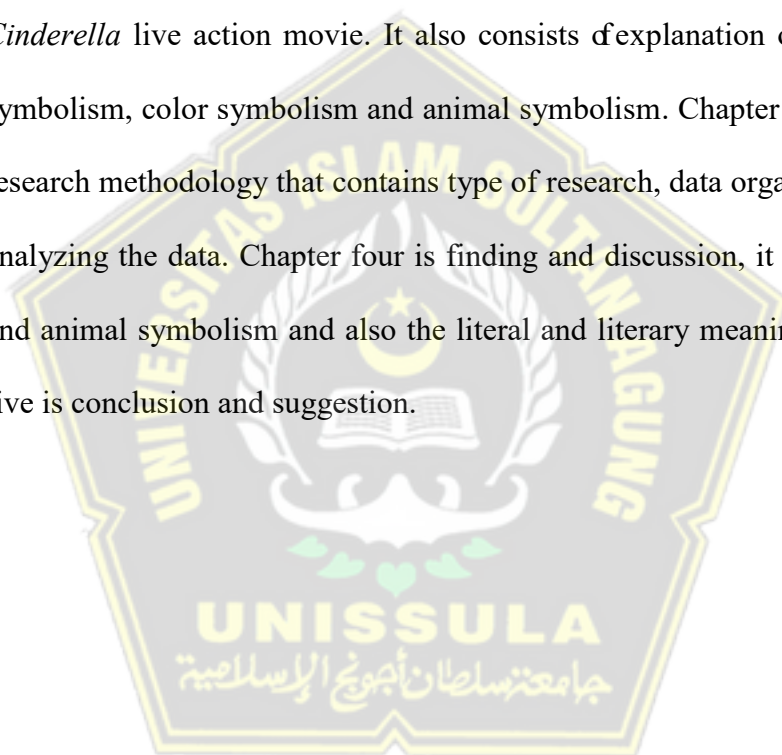
### E. Significant of the Study

There are some expectations from the author about this study:

1. This study hopes that it can help readers understand the types of symbolism portrayed in the Disney's 2015 *Cinderella* live action movie.
2. Hopefully, this study can help to the reader's understanding of using symbolism in the future, and this study can be helpful as be references dealing with similar topic.

## F. Organization of the Study

There are five chapters in this study. The first chapter contains an introduction that discusses the background of the study in general, the problem formulation objectives of the study, the study's limitations, the study's significance, and the study's organization. The second chapter is a discussion of related literature, which includes a synopsis of Disney's 2015 *Cinderella* live action movie. It also consists of explanation of symbols, symbolism, color symbolism and animal symbolism. Chapter three is the research methodology that contains type of research, data organizing, and analyzing the data. Chapter four is finding and discussion, it is the color and animal symbolism and also the literal and literary meaning. Chapter five is conclusion and suggestion.



## CHAPTER II

### REVIEW OF RELATED LITERATURE

A synopsis of Disney's 2015 *Cinderella* live action movie is included in this chapter. A study of relevant material, including symbols, symbolism, color symbolism, and animal symbolism, is also included.

#### A. Synopsis

*Cinderella* told about a beautiful girl named Ella. She had a beautiful face, long hair, curls, and brown, and she wore a blue dress. Ella lived happily with the family, and she lived with her mother and father whose love Ella very much. She had many animals that she considered to be her best friends, they were swan, mouse, horse and other. The happiness turned into sadness when her mother was sick, then her mother died.

Time flew, when Ella grew up, her father asked permission from Ella to marry a woman named Lady Tremaine, Ella agreed. One day Lady Tremaine visited home together with her two daughters named Anastasia and Drisella, they were very impressed to see Ella's appearance, they saw Ella from toe to head. Shortly after marriage, his father left for duty again. After his father left for duty, his stepmother began to take what Ella had, starting from the room that would be occupied by her stepsister and Ella was sleep in the attic. Ella was a good girl, friendly and always happy, she was also good at cleaning up a house always neat

and smart in kitchen matters, Ella was also very compassionate with animals even she had many pets, while her two stepsisters were very lazy and not very good at some houses, they also had no skills. In her own home, Ella was treated like a maid by her stepmother and stepsister.

Sadness started when farmer Jhon comes to Ella's house with sad news. Jhon said that her father was sick on the way and then he died. John also told that in the last moments her father died he only told about Ella and Ella's mother. After her father's died, the economy of Ella's family declined. Then Ella's stepmother fired all of her servants then her mother and step-sister asked Ella to do all the housework. One day, Ella went to the forest, then she met a handsome prince she told a lot, the meeting was only shortly, then Ella returned to the house, and the prince returned to the palace. The prince told his father that he had just met a beautiful girl and fell in love with her, but his father did not agree because the girl did not come from any palace or kingdom. The debate ensued; the prince was still forced to love Ella, but his father would not allow it. The prince asked his father to hold the royal ball. One day, Ella shopped at the market, and at that time an announcement about a royal ball would be held at the palace aimed at choosing a prospective wife for a prince. She immediately returned and gave this happy announcement to her stepsister and stepmother, they were very enthusiastic and they hoped to can become a prince's wife, so that they would live in the palace. Then her stepmother asked Ella to go to the tailor to make three party dresses for her stepsisters and her stepmother.

The day awaited arrival, Ella's stepsisters seemed enthusiastic and prepared to come to the royal ball, they were helped by Ella to wear dresses and dress up.

Ella tried to make her party dress. The night arrived, his stepsister and stepmother were ready to go to the royal ball as well as Ella, Ella was wearing a beautiful pink dress that she repaired. His two stepsisters and stepmother were surprised to see Ella's beauty. They insulted Ella's appearance and dress, even they also damaged Ella's dress. Ella cried seeing her stepsisters and stepmother went to the dance while Ella was only at home. She ran into the backyard when she cried there was an old grandmother who asked for a drink and a piece of bread. Without her knowing, it turns out that an old grandmother she helped was a fairy godmother. The fairy godmother turned a pumpkin into a chart, turned a mouse into a horse, turned a lizard into a bodyguard and turned a swan into a coachman, then the fairy mother repaired Ella's dress to be very nice, the dress was blue, then Ella's shoes were transformed into very good shoes, which became glass shoes. The magic name was only until midnight, after that the magic will disappear and will return to normal.

Ella became a beautiful princess, and happily, she went to the dance. While the stepmother and stepsister had arrived at the party, the party was very crowded, and many of the royal princesses attended the royal ball. As well as ordinary people who attended the royal ball. Arriving at the party, Ella became the center of attention because of her beauty. Ella was beautiful wearing a blue dress she also looked very elegant. The princes immediately approached Ella and danced with Ella. Time passed so fast, and only shortly they were together, the time has turned midnight, and Ella immediately ran away leaved the prince without told her name. One of her shoes, was left in the palace, and Prince Kit kept the shoes. Along the way, everything was lost magic, and everything changed back to normal. Arriving

at the house Ella immediately saved one glass slipper, and Ella listened to all the stories about the royal ball from her stepsister and stepmother.

Whereas in the kingdom, the prince told with his father who was lying sick. His father asked the prince to look for a beautiful girl who danced with him at the royal ball that night. That morning the announcement from the kingdom was announced at a market. The announcement contains that, the prince looked for a mysterious girl who wore glass shoes during a royal ball that night to come to the palace, and the prince would marry her. At the same time, Ella read the announcement, then she went home and looked for the glass slipper she had saved. Ella's glass slipper had been taken by her stepmother and stepsisters. Her stepmother and stepsisters broke Ella's glass slipper and locked Ella in the attic. The king ordered his guards to look for the mysterious girl, they searched all over the city, but all the girls who tried the glass slipper did not fit at their feet. The king's bodyguards arrived at Ella's house and met with Ella's stepsisters, and they both tried to wear the shoes, but they didn't fit at their feet. Ella, who was locked in the attic by her stepmother, did not know who was coming. Ella sang her memory song with her mother. Finally, Ella's voice was heard by the king's guard in front of Ella's house. The prince ordered the guards to bring the girl and try on the glass slipper. Ella came down from the attic and met with the king. Ella tried on the glass slipper, and the shoes fitted on Ella's feet. Then the king took Ella to the kingdom, and they finally married.

## **B. Related Literature**

### **B.1. Symbol and Symbolism**

#### **B.1.1. Definition of Symbol**

The appearance of the symbol has existed since ancient times which was originally only used to show a broken piece of object. In his writings Ostashchuk said that, the concept of symbol first existed in antiquity. It was originally used to describe half of a broken dice or any other object that recalled the missing half and could be reunited (88). Along with the times in everyday human life, people are very closely related to symbols as well as in terms of communication, both verbal communication and non-verbal communication. Ostashchuk explained that, "symbols" are an important part of human life. Symbols are key components of communicative space's religious and national characteristics; their polysemanticity is expressed through human communication, worldview, and self-identification (88).

Meanwhile, Peirce stated that, a symbol is a sign that refers to the object it represents by the operation of a law, usually an association of general ideas, that causes the symbol to be regarded as referring to that item (Qtd. Settineri et al 4). It can be concluded that a symbol is an object or an idea or an object that has a certain meaning outside of its literal meaning that makes people think more than what they know and what they see.



### **B.1.2. Definition of Symbolism**

Before discussing symbolism further, it is necessary to know the origin of the word symbolism itself, which comes from several languages as explained by Webster said that, the word symbol is derived from *symballein*, from the Greek '*symbolon*' and Latin '*symbolum*,' which meant token or sign, means 'to put together' (Qtd. Fadaee 20). Symbolism itself gives a different meaning from the original meaning, the use of this symbolism gives a deeper meaning to a literary work, Shaw stated that "(Symbol is) something used for, or regarded as, representing something else. More specifically, a symbol is a word, phrase, or other expression having a complex of associated meanings; in this sense, a symbol is viewed as having values different from those of whatever is being symbolized" (Qtd. Fadaee 20).

Symbolism in a literary work generally varies depending on what meaning the writer wants to convey to the reader, symbolism can be an object, something around a character in a story, it can also be a situation, as explained by Perrine in Fadaee that "a literary symbol is something that means more than what it is. It is an object, a person, a situation, an action, or some other item that has a literal meaning in the story, but suggests or represents other meanings as well" (Fadaee 20). The use of symbolism in a literary work itself makes literary work have a deeper implied meaning because this symbolism itself emphasizes that a literary work does not only have a literal meaning but also has a figurative meaning as well, as Fadaee wrote that "It is a kind of figures of speech used for increasing the beauty of the text and has figurative meaning besides its literal meaning" (Fadaee 20).

## **B.2. Use symbolism in Literature**

A symbol that stands in for, or replaces, something else. Writers employ a variety of literary strategies to add levels of meaning to their work, and they use symbolism to convey that meaning. Symbolism is a literary element used in literary works to help readers understand a literary work. Using symbols means using objects or actions that have more meaning than their literal meaning. It is when the author uses objects, elements, places, or colors to represent something else (Ostashchuk 88).

It is a literary device that contains many levels of meaning, generally hidden at first glance. It also represents various aspects, concepts, or other properties than those seen in literal translation only (Ostashchuk 88). In a literary work, a symbol can also be used to symbolize a variety of distinct things. A literary work can be more colorful. By using symbols, and can have several meanings because symbolism's goal is to provide multiple meanings. The literary work might then be examined, from a variety of perspectives. On the other hand, for symbols to stay true to the director's or author's intentions, the reader or audience must understand both the general and specific notions of the symbol, and special concepts are usually derived from the author's thinking. Readers or watchers should also be conscious of symbolic meanings, according to Perrine, and should be aware of a few cautions:

1. The story must provide a hint that a detail is to be interpreted symbolically.  
It means that symbolic occurrences can be recognized by repetition, emphasis, or placement.

2. A literary symbol's meaning must be established and maintained by the story's complete context. It signifies that the symbol's meaning may be found within the text, not outside of it.
3. To be labeled a symbol, an object must imply a meaning that differs from its literal meaning in some way.
4. A symbol might have multiple meanings. Symbol varies from metaphor and simile in that it does not contain a comparison, but instead depicts something larger than itself through association. If the cross represents Christianity, for example, its symbolic significance is not derived from a comparison (Qtd. in Fadaee 20-21).

According to Pierce in Liszka's book the classification of symbols there are natural symbols, conventional symbols, singular symbols:

- a. **Natural symbols** are symbol that individuals experience in their daily lives that can be seen with the eyes and always occur in daily life, such as when a dog wags its tail as a kind gesture.
- b. **The term "conventional symbol"** refers to a set of words that are frequently used to substitute other phrases yet have the same meaning. For example, the term "man" denotes what it does because it is a general way of succession of three sounds or signals of sounds formed via habit or learned law, causing reproductions to be regarded as signifying a man or men. While some examples that include conventional symbols are, colors, objects, clothes, animals and nature.

- c. **Singular symbol** If the symbol's object is an actual person, it means that symbols or forms that often stand alone or have an individual nature, such as "moon," can be found in lives without the need for a partner or another symbol because the fact that this one symbol is always stand alone or has an individual nature is enough. (Qtd. Ramadhan 8)

In a literary work, a symbol could be used to represent a variety of distinct things. A symbolism is most commonly represented are colors, objects, clothes, animals and nature. The following are two examples of conventional symbols seen in literature:

#### **B.2.1. Color Symbolism**

In a literary work, the author usually brings up color symbols, especially in films. To give a deeper meaning or give an implied meaning in the film's story, because the color is one form of non-verbal communication that the author presents in a film. The meaning of the color itself describes the energy brought by the player or character. As explained by Tavaragi et al that, Color is a nonverbal means of communication. Each color has a variety of characteristics. It is not a static energy, and its meaning can shift from one day to the next depending on the energy that an individual is displaying at the time (Tavaragi et al).

There are several color symbols found in the Cinderella film, such as blue, pink, white, black, and yellow. And here is the meaning of the symbolism literal and literary;

#### ***Literal meaning***

**Blue:** “having the color of a clear sky or the sea on a clear day” (Oxford University).

**Pink:** “pale red in color” (Oxford University).

**White:** “having the color of fresh snow or of milk” (Oxford University).

**Black:** “having the very darkest color, like coal or the sky at night” (Oxford University).

**Yellow:** “having the color of lemons or butter” (Oxford University).

***Literary meaning:***

**Blue:** “Blue is a thinker. Blue is the hue of the mind and is calming; it has a mental effect rather than the visceral reaction that red has on us. Strong blues can help you think clearly, while lighter, softer blues will help you relax and concentrate. As a result, it is quiet and mentally soothing. It's the hue of straightforward communication" (Tavaragi et al 117).

"Positive attributes include intelligence, communication, trust, efficiency, serenity, duty, logic, coolness, introspection, and calm. Negative characteristics include "coldness, aloofness, lack of emotion, and unfriendliness" (Tavaragi et al 117).

**Pink:** “Pink is the most relaxing of all the colors, and our most dangerous offenders are frequently imprisoned in pink cells, according to research that indicate the color drains energy and reduces aggression. Consider pink to be the color of romance,

love, and peaceful feelings; being in the pink is to be comforted (Business, Sales, and the World Wide Web Are in Color)" (Tavaragi et al. 120).

"Positive: Physical peace, nurturing, warmth, femininity, love, sexuality, and species survival." Inhibition, emotional claustrophobia, emasculation, and physical frailty (Psychological Properties of Colors)" (Tavaragi et al 120).

**White:** "This is the color most people identify with purity (wedding gowns), cleanliness (doctors in white uniforms), and the safety of brilliant light (things go bump in the night... not the bright sunshine!)" (Tavaragi et al 116).

"Hygiene, sterility, clarity, purity, cleanness, simplicity, sophistication, and efficiency are all positive attributes. Negative: Sterility, coldness, barriers, unfriendliness, elitism" (Tavaragi et al 116).

**Black:** "The color black is associated with authority, power, stability, and strength. It's also a color that conjures up images of intelligence (doctorate in black robe; black horn-rimmed glasses, etc.) People dressed in black look to be slimmer. It's a dark color that's sometimes connected with evil (the "bad guy" was almost always a cowboy in a black hat)" (Tavaragi et al 116).

"Sophistication, glamour, security, emotional safety, efficiency, substance are all positive attributes. Negative: oppression, frigidity, menace, and weight" (Tavaragi et al 116).

**Yellow:** "The sun's cheerful yellow is connected with laughter, happiness, and good times. When a person is surrounded with yellow, the brain releases more serotonin



(the feel-good chemical in the brain), making them feel more hopeful. It's the color of hope, but be careful with yellow; when it's bright, it's the color of flames, and studies show that babies cry more in (bright) yellow rooms, and tempers flare more around that color as well" (Tavaragi et al 119).

"Optimism, confidence, self-esteem, extraversion, emotional strength, kindness, and inventiveness are all positive traits. Irrationality, fear, emotional fragility, despair, anxiety, and suicide are all examples of negative traits" (Tavaragi et al 119).

### **B.2.2. Animal Symbolism**

In a literary work, symbols are often raised by the author to give a deeper meaning, whether in the form of figure of speech, color symbolism, or animal symbolism. Before knowing the meaning each of animal, it is better to know more deeply what animal symbolism is, from a journal article written by D. Vijaya Lakshmi et al. Explained that, in the hands of literary artists, symbolism, one of the literary devices, takes on many various forms. It's described as the use of symbols to represent ideas and attributes by giving them symbolic meanings other than their literal meanings (Lakshmi et al 307).

One of the symbolism discussed in the journal article written by Lakshmi et al is animal symbolism, Lakshmi et al wrote in their journal that, animal symbols play an important role in his works since animals have long been associated with human activities. Animals were not only symbols in art and literature from all



civilizations; their habits were also examined; they were increasingly symbolic aspects of man's environment. Animal symbolism is important in the history, tradition, culture, and philosophy of all eras of literature. Proverbs, music, folk tales, and legends are all full of animal symbols (Lakshmi et al 307). From this explanation, it can be concluded that animal symbols play an important role in human life and play an important role in a literary work, such as children's stories, songs, fairy tales, because animal symbolism can describe the characters in a story.

Meanwhile, the use of animal symbolism itself aims to convey a deeper message that is applied to the characters in a story, Coelho employs these symbols to express a mystical message that may be applied to both real life and fictitious characters (Lakshmi et al 308). Animal symbolism that is presented in a novel or other literary work is a connecting way that can make it easier for readers to understand the character, the reader can better understand the experiences of his characters by using these animal symbols as vehicles. Coelho's themes are adorned with color and clarity thanks to his symbols. In his writings, Paulo Coelho has painstakingly interwoven symbols. Each animal emblem represents a human quality that is either weak or dynamic (Lakshmi et al 313) . There are several animals that are symbols in Cinderella such as mouse, goose, horses, butterfly, cat. And here is the meaning of the symbolism literal and literary:

***Literal Meaning:***

**Horse:** “a large animal with four legs, a mane (long thick hair on its neck) and a tail. Horses are used for riding on, pulling carriages, etc.” (Oxford University).

**Swan:** “a large bird that is usually white and has a long, thin neck. Swans live on or near water” (Oxford University).

**Cat:** “a small animal with soft fur that people often keep as a pet. Cats catch and kill birds and mice” (Oxford University).

**Butterfly:** “a flying insect with a long thin body and four large, usually brightly coloured, wings” (Oxford University).

**Mouse:** “a small animal that is covered in fur and has a long thin tail. Mice live in fields, in people’s houses or where food is stored” (Oxford University).

### ***Literary Meaning:***

**Horse:** "A recurring theme in these allegories is the metaphor of soul and body, whether human or animal." Horse is a sign of quickness, speed, and rebelliousness at times, and allegory of soul, body, sensuality, and devil at other times in Masnavi" (Nejad et al 2).

**Swan:** “Swans have long been associated with beauty, majesty, and love. It is presented to us from a different perspective. Such emotions like beauty and the splendour of nature are eternal categories for humans” (Kamarova 423).

**Cat:** “Shrewdness, betrayal, cruelty, and witches are all bad feminine traits linked with cats. As a result, cats are revered as gods and punished as devils. Cats, like all other basic symbols, convey both good and bad characteristics at the same time. In analytic psychology, there is a lot of research on” (Park 44).

**Butterfly:** “The chrysalis is the egg that contains the potentiality of a living person, and the butterfly that emerges from within it is a metaphor of resurrection, a form of emerging from the tomb, according to one part of butterfly symbolism. As a result, the butterfly is associated with this natural phenomenon of successive transformations, which include a state of ideal maturity, a symbolic funeral, and the posthumous fate of the deceased who, after traveling a difficult, rocky road, achieves a state of plenitude in his or her quality as a new osiris. The butterfly takes on a significant semantic importance as a symbol of life that is constantly renewing itself, as well as a sign of rebirth after death” (Costa 633).

**Mouse:** "In Persian literature, the mouse is a symbol of the world's love and greed, as well as a timid and sneaky person who seems to be weak and incapable" (Nejad et al 4).

## CHAPTER III

### RESEARCH METHODOLOGY

This chapter explains the research methodology, which included the data collection and analysis methods used to answer the problem formulation. This research method consists of three sections: types of research, data organization, and data analysis.

#### A. Types of Research

The data research of this study will used qualitative method. Qualitative method is a method for assessing, collecting, and describing data in order to explain the study's subject. Qualitative method takes a realistic and interpretive approach to the subject. Qualitative data can characterize the study's object in great depth using descriptions obtained from data collected through case studies, observations, interviews, and visual materials like books or literary works (Aspers and Corte, 2019).

Polkinghorne explains the objective of qualitative research: "The goal of qualitative research is to enrich the understanding of an experience; it must select fertile exemplars of the experience for investigation" (140). The purpose of this type of study is to collect extensive illustrative data in order to gain a thorough understanding of the various dimensions to be examined. The data was evaluated to determine the solution to the problem formulation, that is the study's goal.

## **B. Data Organization**

The data collection method and types of data are the two elements in this study that are used to organize the data.

### **B.1. Data of Collecting Method**

Some steps used in data collecting method are:

#### **B.1.1. Watching Movie**

The first step was to watched the *Cinderella* movie which is the focused of this investigation. It takes a lot of watched of this movie to fully comprehend the plot. Identify the animal characters and colors found right away.

#### **B.1.2. Reading Movie Script**

Following the watched of the *Cinderella* movies, the next step was reading the movie scripts. The movie script must be read to the researcher several times. This step's purpose was to determine the important plot points that will be investigated.

#### **B.1.3. Identifying the Data**

The data were identified by observing the color used in the movie, animal characters, capturing some scene and that became the answer of the problem formulation. Then, either using an online dictionary to learn the literal meaning of the colors and animals, and read journal and article to get the literary meaning.

#### **B.1.4. Classifying the Data**

Data classification was is process of grouping data based on the problem formulation on a table inventory or appendices. There are columns for number, capturing animals and the color used in the movie, minutes, reference and comments in the appendices table.

#### **B.1.5. Reducing the Data**

The final step was to reduce the data, which involved selecting the most important information from the films. As a result, the data was able to respond to the problem formulation from chapter one.

### **B.2 Types of the Data**

There are two types of data used in this research: primary and secondary data.

#### **B.2.1. Primary Data**

Primary data is the main data collected from the "*Cinderella*" movie which was released in 2015 as the main source.

#### **B.2.2. Secondary data**

Secondary data is information obtained from an online dictionary, journals, articles, or websites that is relevant to the study as functions as a complement to the primary data.

### **C. Analyzing Data**

The last step in this research methodology was data analysis. This

technique was created to explain the aspects in the "*Cinderella*" movie and make an understanding of the plot through images, statements, descriptions, and dialogues. Findings and Discussion is the outcome of the analysis described in Chapter IV. The data would be presented in detail in the appendices.





## CHAPTER IV

### FINDINGS AND DISCUSSION

In this chapter, the writer discusses about the finding and analysis on symbolism and meaning of color and animal symbolism found in the film *Cinderella* 2015.

#### **A. Kind of color and animal symbolism found in Disney's 2015 *Cinderella* live action movie.**

In a literary work, a symbol could be used to represent a variety of distinct things. A symbol is most commonly represented are colors, objects, clothes, animals and nature. In a literary work, the author usually brings up color symbols, especially in movie. To give a deeper meaning or give an implied meaning in the movie's story, because the color is one form of non-verbal communication that the author presents in a film. The meaning of the color itself describes the energy brought by the player or character. As explained by Tavaragi et al that, Color is a nonverbal means of communication. Each color has a variety of characteristics. It is not a static energy, and its meaning can shift from one day to the next depending on the energy that an individual is displaying at the time (Tavaragi et al).

On the other hand, color symbolism, writers usually include animal symbolism to add aesthetic value. One of the symbolisms discussed by Lakshmi et al is animal symbolism, Lakshmi et al wrote in their journal that, animal symbols play an important role in his works since animals have long been associated with human activities. Animals were not only symbols in art and literature from all

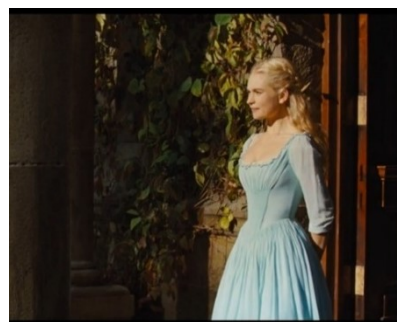
civilizations; their habits were also examined; they were increasingly symbolic aspects of man's environment. Animal symbolism is important in the history, tradition, culture, and philosophy of all eras of literature. Proverbs, music, folk tales, and legends are all full of animal symbols (Lakshmi et al 307).

### **A.1. Color symbolism found in Disney's 2015 *Cinderella* live action movie.**

In the *Cinderella* movie, the author presents color symbolism to add to the aesthetic impression and give it a deeper meaning. As explained by Tavaragi et al that, Color is a nonverbal means of communication. Each color has a variety of characteristics. It is not a static energy, and its meaning can shift from one day to the next depending on the energy that an individual is displaying at the time (Tavaragi et al). There are several color symbols found in the *Cinderella* movie, such as blue, pink, white, black, yellow.

#### **A.1.1. Blue**

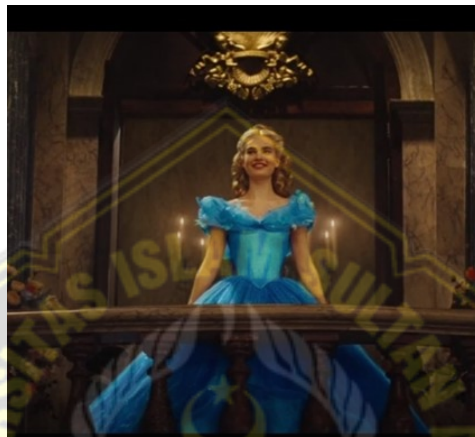
In the *Cinderella* movie, the first color symbolism found is blue, which is very identical to the main character in this movie. This color symbol was first seen when Ella wore a blue dress.



**Picture 1**

**00:09:00**

Then, at the ball party held by the prince in the palace, Ella also wore a very elegant blue gown and made it even more beautiful.



**Picture 2**

**00:57:36**

From the evidence above, it can be concluded that in the *Cinderella* movie, the color symbolism found is blue. The blue color in the *Cinderella* movie is identical to the main character in the *Cinderella* movie. Because the everyday dress that Ella wears is light blue seen in the proof of picture number 1. On the proof of picture number 2 the gown she wears while attending the ball party held by her royal prince in the *Cinderella* movie. An article written by Tavaragi et al said that blue is the color that synonymous with peace of mind and mentality. "Blue is a thinker. Blue is the hue of the mind and is calming; it has a mental effect rather than the visceral reaction that red has on us. Strong blues can help you think clearly, while lighter, softer blues will help you relax and concentrate. As a result, it is quiet

and mentally soothing. It's the hue of straightforward communication" (Tavaragi et al 117).

### **A.1.2. Pink**

The next is pink, on the proof of picture number 3, Ella's stepsister named Anastasia wore a pink dress when she came to Cinderella's house for the first time.

**Picture 3**

00:09:20



On the other hand, Ella also wears a pink dress. This dress is wears by Ella when Ella will be attends the ball party, this dress is a legacy from Ella's mother.

**Picture 4**



00:41:30

Then at the ball party Anastasia also wore a very colorful pink gown with accents of small flowers on her gown, seen in the picture number 5.



**Picture 5**

**01:02:39**

From some of the pictures, there are several characters in the Cinderella movie who wears pink dresses. It can be concluded that this pink symbolism is found in the Cinderella movie. Pink wear by Ella's stepsister, from the pictures evidence number 3, Anastasia wore a pink dress when she came to Ella's house for the first time. The pink dress was also used at the ball by Ella's stepsister seen in the picture number 5. From the pictures evidence number 4, pink dress is also used by Ella, the main character in the movie Cinderella when she wants to attend the ball which is being held at the palace. The pink dress is the favorite dress of Ella's mother who has died.

Quoting from journal article written by Tavaragi et al, describes the definition of the color pink, "Pink is the most relaxing of all the colors, and our

most dangerous offenders are frequently imprisoned in pink cells, according to research that indicate the color drains energy and reduces aggression. Consider pink to be the color of romance, love, and peaceful feelings; being in the pink is to be comforted (Business, Sales, and the World Wide Web Are in Color)” (Tavaragi et al 120).

### A.1.3. White

The next color symbolism is white, white color is identical to the fairy godmother, from the pictures evidence number 6, seen fairy godmother wearing a white dress.



Picture 6

At the time of holding a ball party, the prince wore a white coat with a light blue accent.



Picture 7

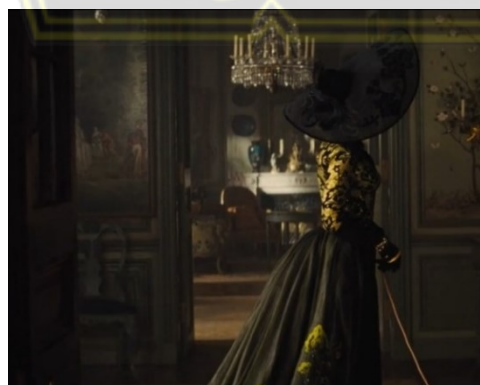


**00:58:32**

A symbolism of the white color is also found in the *Cinderella* movie. This white color is wears by the fairy godmother in a picture number 6, who helps Cinderella in change into a very beautiful princess when she goes to the ball. In the picture number 6, the fairy godmother is wearing a very elegant white dress. In the other moment, at the ball, it can be seen in the proof of the picture number 7, that the prince also wears a white coat, with blue accent. Based on the article written by Tavaragi, explains that, "This is the color most people identify with purity (wedding gowns), cleanliness (doctors in white uniforms), and the safety of brilliant light (things go bump in the night... not the bright sunshine!)" (Tavaragi et al 116).

#### **A.1.4. Black**

Next is black, the symbolism of this black color is very identic with Ella's stepmother. When she first came to Ella's house. In the picture number 8 her stepmother wears a black dress with accented small gold flowers and also wear a black hat.



**Picture 8**



**00:09:40**

Also seen in another scene, in the picture number 9. Ella's stepmother is wearing a black dress, which makes her look very beautiful.



**Picture 9**

**00:22:24**

The black color is also present in the *Cinderella* movie. This black color is identical to Cinderella's stepmother. When Ella's stepmother first came to her house, she wore a black dress with a black base and yellow gold flower accents. She looks very elegant and charming in that dress. In another scene in the picture number 9, wearing a black dress, which makes her look very beautiful. As Tavaragi explains in his article, "The color black is associated with authority, power, stability, and strength. It's also a color that conjures up images of intelligence (doctorate in black robe; black horn-rimmed glasses, etc.) People dressed in black look to be slimmer. It's a dark color that's sometimes connected with evil (the "bad guy" was almost always a cowboy in a black hat)" (Tavaragi et al 116).

### A.1.5. Yellow

Another color found is yellow, this yellow color is identical to Ella's or Cinderella's stepsister named Drisella. Seen picture 10, when she first came to Ella's house, she was wearing a yellow dress with accents of small flowers.



**Picture 10**

**00:09:20**

In another moment seen picture 11, Drisella was seen wearing a yellow gown while attending a ball party at the palace, which was held by the prince. Drisella looks very beautiful in that gown.



**Picture 11**

**01:02:39**

From this evidence, it can be concluded, that yellow is also present in the *Cinderella* movie; this yellow color is identical to Ella's stepsister Drisella. When she first came to Ella's house, Drisella wore a yellow dress with floral accents in the picture 10 and a yellow hat. In addition, Drisella wears a yellow gown with floral accents at the ball at the palace, seen in picture evidence number 11.

According to journal articles written by Tavaragi, "The sun's cheerful yellow is connected with laughter, happiness, and good times. When a person is surrounded with yellow, the brain releases more serotonin (the feel-good chemical in the brain), making them feel more hopeful. It's the color of hope, but be careful with yellow; when it's bright, it's the color of flames, and studies show that babies cry more in (bright) yellow rooms, and tempers flare more around that color as well" (Tavaragi et al 119).

#### **A.2. Animal symbolism found in Disney's 2015 Cinderella live action movie.**

Animal symbols play an important role in human life and play an important role in a literary work, such as children's stories, songs, fairy tales, movie, and other, because animal symbolism can describe the characters in a story,

Lakshmi et al wrote in their journal that, animal symbols play an important role in his works since animals have long been associated with human activities. Animals were not only symbols in art and literature from all civilizations; their habits were also examined; they were increasingly symbolic aspects of man's environment. Animal symbolism is important in the history, tradition, culture, and philosophy of all eras of literature. Proverbs, music, folk tales, and legends are all full of animal symbols (Lakshmi et al 307). There are several animals that are symbolize in Cinderella movie such as mouse, swan, horses, butterfly, and cat.

#### **A.2.1. Horse**

The first animal symbolism is the horse. In the *Cinderella* movie, the author presents a horse animal. In the story in the *Cinderella* movie, horses are used as vehicles for the characters in the story. Whether it's in the form of a horse-drawn carriage or just the horse as a ride. From the evidence picture 12 it can be seen that Ella is riding a horse to go somewhere.



**Picture 12**

**00:26:40**

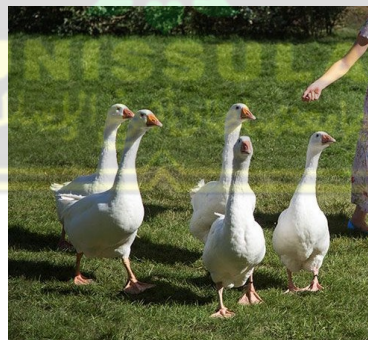
In the article written by Nejad explained that, "A recurring theme in these allegories is the metaphor of soul and body, whether human or animal." Horse is a sign of quickness, speed, and rebelliousness at times, and allegory of soul, body, sensuality, and devil at other times in Masnavi" (Nejad et al 2).

#### A.2.2. Swan

"Swans have long been associated with beauty, majesty, and love. It is presented to us from a different perspective. Such emotions like beauty and the splendour of nature are eternal categories for humans" (Kamarova 423).

**Picture 13**

**00:01:35**



From the picture evidence number 13, it can be seen that there is also swan, which was found in the *Cinderella* movie. In the story of *Cinderella* movie, this swan is a pet that is around Cinderella's house. Ella loves all the animals around her house.

### A.2.3. Cat

Cat are also show in the Cinderella movie. The cat is a pet brought by Cinderella's stepmother. Found in a journal article that park explained that, “Shrewdness, betrayal, cruelty, and witches are all bad feminine traits linked with cats. As a result, cats are revered as gods and punished as devils. Cats, like all other basic symbols, convey both good and bad characteristics at the same time. In analytic psychology, there is a lot of research on” (Park 44).



Picture 14

00:19:30

From picture evidence number 14, that in the *Cinderella* movie also presents cat symbolism. Seen a cat with dark gray fur in Ella's house, the cat is Ella's stepmother's cat, which she brought to Ella's house.

### A.2.4. Butterfly

In a journal Costa wrote that, “The chrysalis is the egg that contains the potentiality of a living person, and the butterfly that emerges from within it is a metaphor of resurrection, a form of emerging from the tomb, according to one part



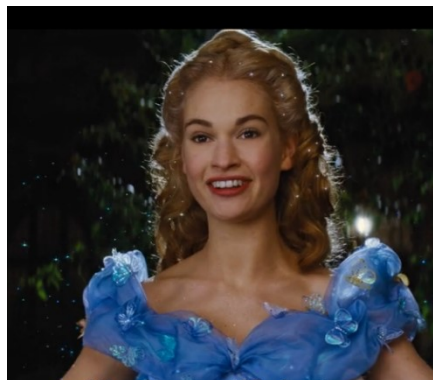
of butterfly symbolism. As a result, the butterfly is associated with this natural phenomenon of successive transformations, which include a state of ideal maturity, a symbolic funeral, and the posthumous fate of the deceased who, after traveling a difficult, rocky road, achieves a state of plenitude in his or her quality as a new osiris. The butterfly takes on a significant semantic importance as a symbol of life that is constantly renewing itself, as well as a sign of rebirth after death” ( Costa 633).



**Picture 15**

**00:50:10**

The picture evidence number 15 shows that many butterflies surround Ella when Ella transforms using a blue gown, when she is going to attend the ball party.





### Picture 16

00:50:44

In the next proof the picture number 16, seen some butterflies around Ella's gown. Seen in those proof of the picture 15, first when the process of transforming Ella from a pink gown to a blue gown, Ella was surrounded by many butterflies, and when in the picture number 16 she is already wearing a blue gown, around her chest there are lots of accent butterfly.

#### A.2.5. Mouse



Picture 17

00:23:52

The next animal symbolism that is presented is the mouse, in the Cinderella movie the author presents the mouse as a friend of Ella. From the picture evidence number 17, it can be seen that there are several mice with white fur and long tails. Nejad et al explained that, "In Persian literature, the mouse is a symbol of the

world's love and greed, as well as a timid and sneaky person who seems to be weak and incapable" (Nejad et al 4).



## **B. Literal and literary meaning of color and animal symbolism found in disney's 2015 *Cinderella* live action movie.**

In the *Cinderella* movie uses many symbols with each different meaning. alongside the story, Symbolism in a literary work generally varies depending on what meaning the writer wants to convey to the reader, symbolism can be an object, something around a character in a story, it can also be a situation, as explained by Perrine in Fadaee states that "a literary symbol is something that means more than what it is. It is an object, a person, a situation, an action, or some other item that has a literal meaning in the story, but suggests or represents other meanings as well" (Fadaee 20). The use of symbolism in a literary work itself makes literary work have a deeper implied meaning because this symbolism itself emphasizes that a literary work does not only have a literal meaning but also has a literary meaning.

### **B.1. Literal and literary meaning of color symbolism found in disney's 2015 cinderella live action movie.**

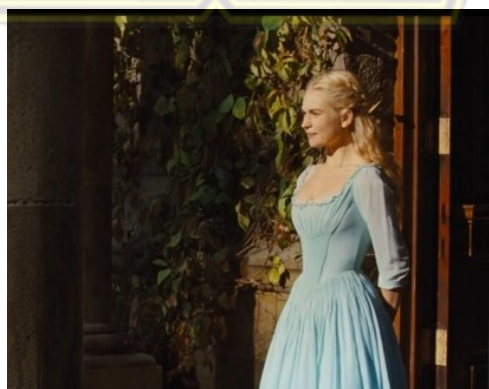
In this study, the author explains the literal and literary meaning of the color symbolism found in *Cinderella* movie. The literal meaning is taken from the Oxford online dictionary, while to find out the literary meaning, the author takes from several journal articles. Blue, pink, white, black, and yellow are some of the color symbolisms shown in the *Cinderella* movie. The following is an explanation of the literal and literary meaning of color symbolism.

#### **B.1.1. Blue**

Quoting from the Oxford online dictionary, that the blue color means the color of the clear sky or ocean. Like the ocean and the sky which has a light blue

color. *Blue* is “having the color of a clear sky or the sea on a clear day” (Oxford University). On the other hand, in contrast to the oxford dictionary, Tavaragi et al explained that, “Blue is a thinker. Blue is the hue of the mind and is calming; it has a mental effect rather than the visceral reaction that red has on us. Strong blues can help you think clearly, while lighter, softer blues will help you relax and concentrate. As a result, it is quiet and mentally soothing. It's the hue of straightforward communication" (Tavaragi et al 117). It can be concluded that, the color blue is a symbol of intellectuality, peace of mind, and soul.

Then, Tavaragi Explain the negative and positive meaning of blue color, "Positive attributes include intelligence, communication, trust, efficiency, serenity, duty, logic, coolness, introspection, and calm. Negative characteristics include "coldness, aloofness, lack of emotion, and unfriendliness" (Tavaragi et al 117). It means that, the positive side of the blue color itself is a sign of intelligence, calm, self-confidence. While the negative side of the color blue means loneliness, unfriendliness, and also a lack of emotion in the soul.



**Picture 1**

00:09:00



Picture 2

00:57:36

Based on its literal and literary meaning, taken from from oxford online dictionary and journal articles and picture evidence number 1 and 2 from the *Cinderella* movie. So, it can be concluded that this blue color signifies peace of mind, and someone who uses blue indicates a person who is full of calm. As seen in the *Cinderella* movie, the main character in *Cinderella* movie often uses the color blue, with the character being brought so gracefully and full of serenity. As seen in scene 00:09:00 seen in the picture 1, when her stepmother and stepsisters come to the house for the first time, Ella looks very calm about the attitude of the two stepsisters.

**Ella's Father:** She'll really be your stepmother, and you'll have two lovely sisters to keep you company.

[to herself as she prepares to meet her stepmother and sisters]

**Cinderella:** Have courage, be kind.

[she joins her father as her stepmother's carriage arrives]

**Ella's Father:** Welcome, ladies! Welcome!

[Ella's father helps the sisters out of the carriage; to Cinderella]

**Drisella:** You're very nice.

**Cinderella:** I'm so happy to meet you.

**Anastasia:** You have such pretty hair.

**Cinderella:** Oh, thank you. (00:08:49-00:09:28)

From the conversation between Ella and her stepsister, Ella looks confident and calm in facing her two stepsisters that she first met. Ella is also very friendly to her stepmother, she welcomes her two stepsisters and stepmother calmly, gracefully and confidently, and also, at the ball at the minute 00:57:36, Ella looked very elegant in that blue gown, seen in the picture evidence number 2.

### B.1.2. Pink

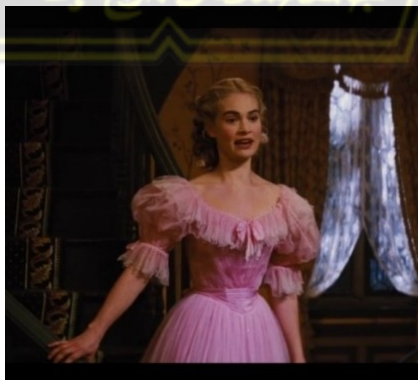
Next is pink, it looks like there are some characters wearing pink dresses, the first is Ella's stepsister who wears a pink dress with small flower accents, seen in the picture evidence number 3.



**Picture 3**

**00:09:20**

The literal meaning of the color pink according to the oxford dictionary, Pink is “pale red in color” (Oxford University). Quoting from the Oxford online dictionary, it is explained that pink is a pale red or pink color.



**Picture 4**

**00:41:30**





**Picture 5**

**01:02:39**

While the literary meaning, this pink color, in contrast to its literal meaning, a journal article written by Tavaragi states that pink is a calming color, the color of love, and a soft feeling. This pink color is also considered the most soothing color of all colors. Tavaragi et al said that, "Pink is the most relaxing of all the colors, and our most dangerous offenders are frequently imprisoned in pink cells, according to research that indicate the color drains energy and reduces aggression. Consider pink to be the color of romance, love, and peaceful feelings; being in the pink is to be comforted (Business, Sales, and the World Wide Web Are in Color)" (Tavaragi et al. 120).

In this article, Tavaragi et al also explain the positive and negative sides of this pink color, Tavaragi et al wrote that, "Positive: Physical peace, nurturing,

warmth, femininity, love, sexuality, and species survival." Inhibition, emotional claustrophobia, emasculation, and physical frailty (Psychological Properties of Colors)" (Tavaragi et al 120).

Quoting from the Oxford online dictionary, the literal meaning of pink is explained that pink is a pale red or pink color. In contrast to its literal meaning, a journal article written by Tavaragi states that pink is a calming color, the color of love, and a soft feeling. This pink color is also considered the most soothing color of all colors. Pink also has positive and negative sides, as explained by Tavaragi, pink has a positive meaning, which symbolizes feminine, love. While the negative side of this pink symbol is emotional, weakness. As seen in the *Cinderella* movie, Ella and her stepsisters are very opposite, the nature of the two is also different. Ella wears a pink dress that really symbolizes elegance and feminine, as seen in the picture evidence number 4.

**Lady Tremaine:** Cinderella.

**Cinderella:** It cost you nothing. It was my mother's old dress, you see. And I took it out myself.

[in a mockingly wicked one]

**Drisella:** Oh, la. Cinderella at the ball! No one wants a servant as a bride.

**Lady Tremaine:** After all I've done.

**Cinderella:** I don't want to ruin anything; I don't even want to meet the prince.

**Lady Tremaine:** Oh, and you won't. Cause there's no question of you going.

**Cinderella:** But all of the maidens of the land are invited, by order of the King.

**Lady Tremaine:** It is the King I'm thinking of. It would be an insult to the royal personage to take you to the palace in these old rags. (00:41:33-00:42:05)

In the scene at (00:41:33-00:42:05), Ella and her stepmother and stepsisters are arguing because Ella wants to go to the dance. Ella wears her mother's old pink dress which fits perfectly with Ella and looks very elegant and feminine. Ella wearing her mother's old dress also shows Ella's love for her mother. So, it can be concluded that the symbolism of the color pink means about elegance, feminine and love.

**Fairy Godmother:** [voice over] Mornings did not agree with Ella's stepsisters. And they lacked accomplishment in such domestic arts as keeping house. In fact, they lacked accomplishment in any art. (00:18:35-00:18:52)

From the evidence of the narrative, Fairy Godmother said "they lacked accomplishment in such domestic arts as keeping house", which means Ella's

stepsister is not as strong as Ella, because Ella can do all the housework while her stepsister cannot.

**Anastasia:** It was not our fault, mother. It was that girl!

**Drisella:** The mystery princess.

**Cinderella:** Mystery princess? Why, what a charming notion. (01:14:40-01:14:47)

From the dialogue between Ella's stepsisters, it can be seen that Anastasia is jealous of the mysterious princess who comes to the ball and dances with the prince.

**Anastasia:** And he actually danced with the ugly thing. (01:15:00-01:15:03)

Anastasia also says that the mysterious princess dances badly. From some evidence of dialogue, it can be concluded that pink is identical to Anastasia, as for Ella's stepsister seen in picture number 3 and 5, she is symbolized as a woman with jealous feelings for Ella and is not as strong as Ella.

### B.1.3. White



**Picture 6**

**00:45:43**



**Picture 7**

**00:58:32**

The literal meaning described by the oxford dictionary, white is “having the color of fresh snow or of milk” (Oxford University). From the statement above can be conclude that, the literal meaning taken from the Oxford online dictionary, white is interpreted as a fresh color like snow or milk. On the other hand, the literary meaning takes from article was written by Tavaragi, explaining that the color white is synonymous with cleanliness, purity of the soul. The journal also stated that the positive side of this white color is about the clarity or purity of the soul. But there is also a negative side to this white color, which is about the nature of being cold, unfriendly. Tavaragi et al said that, “This is the color most people identify with purity (wedding gowns), cleanliness (doctors in white uniforms), and the safety of brilliant light (things go bump in the night... not the bright sunshine!)” (Tavaragi et al 116).

In addition, Tavaragi et al also explains the positive and negative meanings of the white color, "Hygiene, sterility, clarity, purity, cleanness, simplicity, sophistication, and efficiency are all positive attributes. Negative: Sterility, coldness, barriers, unfriendliness, elitism" (Tavaragi et al 116). The journal explains that the positive meaning of white is about clarity or purity of the soul. But there is also a negative side to this white color, which is about the cold, unfriendly nature.

In the Cinderella movie, based on the picture evidence number 6, the character who wears white is symbolized by the fairy godmother and the picture number 7 symbolize by the prince. Although not clearly explained, that the fairy godmother and the prince have traits like what is described in the journal, but from the way, their actions and behavior. So, it can be concluded that, these two characters have good qualities such as simplicity.

[at the palace the prince meets with his father, he King, in his room as the doctor is giving him a checkup]

**King:** You sound as if you're the first fella ever to meet a pretty girl!

**Prince:** She wasn't a pretty girl! She was a pretty girl, but there was so much more to her.

**King:** How much more? You've only met her once! How could you know anything about her?

**Prince:** You told me you knew right away when you met mother.

**King:** That's different. Your mother was a princess.

**Prince:** You would have loved her anyway.

**King:** I would never have seen her because it wouldn't have been appropriate.

And my father would've told me what I'm telling you, and I would've listened. (00:31:27-0:31:50)

From the evidence of the conversation, it appears that the prince told the king that he met a very beautiful girl. but the king questioned Ella's social status, because Ella was not a princess. Seen, from the way the prince chose his partner, he didn't see where Ella came from, from which kingdom, but he could still love Ella with all his heart.

#### **B.1.4. Black**

Black also appears in the Cinderella movie, black has the literal meaning. Taken from the online oxford dictionary, black is "having the very darkest color, like coal or the sky at night" (Oxford University). Quoting from the oxford online dictionary can be concluded that, black has the meaning of the darkest color like the sky at night. The other hand the literary meaning of black is taken from the journal articles from Tavaragi et al, in their journal article the meaning of black is "The color black is associated with authority, power, stability, and strength. It's also a color that conjures up images of intelligence (doctorate in black robe; black horn-rimmed glasses, etc.) People dressed in black look to be slimmer. It's a dark color that's sometimes connected with evil (the "bad guy" was almost always a cowboy in a black hat)" (Tavaragi et al 116).



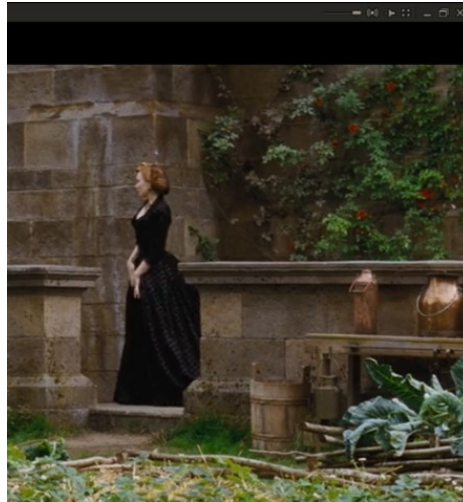
Tavaragi et al explains that black is a color that tends to lead to strength, the authority of the soul as well as evil. Tavaragi also explain the negative and positive meaning from black, "Sophistication, glamour, security, emotional safety, efficiency, substance are all positive attributes. Negative: oppression, frigidity, menace, and weight" (Tavaragi et al 116). It can be concluded that, the positive meaning of black is about glamor, security of the soul. While negatively the meaning of black color means oppression, cruelty, threat.



**Picture 8**

**0009:40**

In the Cinderella movie black identical to Cinderella's stepmother, seen in the picture number 8, Ella's stepmother wears black dress with gold accents. Although it is not clearly explained, in terms of behavior and the way she treats Ella, she is cruel and makes Ella a maid in her own house. Ella's stepmother was very cruel to Ella.



**Picture 9**

**00:22:24**

From the photo evidence number 9 taken from the *Cinderella* movie, seen the stepmother wears the elegance black dress. As well as the literal and literary meaning of black, it can be concluded that someone who uses black is synonymous with cruelty. So, in the *Cinderella* movie, the author wants to symbolize Cinderella's stepmother with a glamorous and cruel woman through the black clothes she uses.

**Lady Tremaine:** Who's this for? Is there someone we've forgotten?

**Cinderella:** It's my place.

**Lady Tremaine:** Oh, it seems too much to expect to prepare breakfast, serve it and still sit with us. Wouldn't you prefer to eat when all the work is done, Ella? Or should I say, Cinderella? Hm? (00:25:15-00:25:33)

From the evidence of the dialogue, it is seen that Ella's stepmother is very cruel to her. Ella is not allowed to have breakfast with her stepmother and stepsisters, and Ella has to finish all the housework first. So, it can be concluded that the stepmother character in the *Cinderella* movie is identical to black clothes, the author wants to describe that the stepmother in the *Cinderella* movie is a cruel figure.

#### **B.1.5. Yellow**

Quoting from oxford online dictionary, the literal meaning of yellow is “having the color of lemons or butter” (Oxford University). Based on the quotation, the literal meaning of yellow is the color of lemon or butter. In addition, the literary meaning of yellow taken from journal articles write by Tavaragi et al, yellow is “The sun's cheerful yellow is connected with laughter, happiness, and good times. When a person is surrounded with yellow, the brain releases more serotonin (the feel-good chemical in the brain), making them feel more hopeful. It's the color of hope, but be careful with yellow; when it's bright, it's the color of flames, and studies show that babies cry more in (bright) yellow rooms, and tempers flare more around that color as well” (Tavaragi et al 119).

In the other hand, Tavaragi et al also explains the positive and negative meanings of yellow is "Optimism, confidence, self-esteem, extraversion, emotional strength, kindness, and inventiveness are all positive traits. Irrationality, fear, emotional fragility, despair, anxiety, and suicide are all examples of negative traits” (Tavaragi et al 119). From this explanation it can be concluded that the literary meaning of yellow is, synonymous with joy, happiness, and optimism. In addition,

Tavaragi also explained that the positive side of yellow is about high self-confidence, optimism, and friendliness. In addition, the negative side is also explained in the journal, that yellow means fear, emotion, and mental anxiety.



**Picture 10**

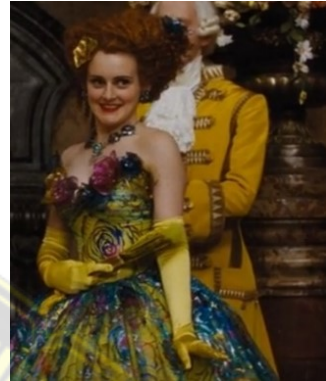
**00:09:20**

**Drisella:** I'm Drisella.

**Anastasia:** And I'm Anastasia. People want to know.

[Drisella whispers to the Crier]

**Drisella:** I'm the clever one. (00:54:30-00:54:35)



**Picture 11**

**01:02:39**

In the *Cinderella* movie, the yellow color is identical to Ella's stepsister, Drisella. In some scenes, in the picture number 10 she wears a yellow dress with small flower accents. In the proof of picture number 11, it can also be seen that she was wearing a yellow dress at the ball party. The other than, from the dialogue evidence found, Drisella has high self-confidence. She introduces herself as "Drisella the clever one". So, it can be concluded that, the writer of *Cinderella*

movie wanted to symbolize that Drisella's character is cheerful and has high self-confidence, but on the other hand, she also feels anxiety and fear.

## **B.2. Literal and literary meaning of animal symbolism found in disney's 2015 *Cinderella* live action movie.**

The author of this study analyzes the literal and literary meanings of animal symbolism in the Cinderella movie. The author derived the literal meaning from the Oxford online dictionary, while the literary connotation was derived from some journal articles. The mouse, the swan, the horses, the butterfly, and the cat are all symbolism found in the Cinderella movie. The literal and literary meanings of animal symbolism are explained in the following sections.

### **B.2.1. Horse**

In the Oxford online dictionary it is explained that the meaning of a horse is, "a large animal with four legs, a mane (long thick hair on its neck) and a tail. Horses are used for riding on, pulling carriages, etc." (Oxford University). Based on the Oxford online dictionary, horse means an animal with four large legs and is used as a mount, pulling a carriage, and so on.



**Picture 12**



**00:26:40**

In the *Cinderella* movie the author presents horses as a means of transportation, to pull a carriage and so on. From the picture evidence number 12, Ella is seen riding a horse to a place. Besides having a literal meaning, one of the journal articles wrote the literary meaning of horses. Horses is "A recurring theme in these allegories is the metaphor of soul and body, whether human or animal." Horse is a sign of quickness, speed, and rebelliousness at times, and allegory of soul, body, sensuality, and devil at other times in Masnavi" (Nejad et al 2).

Different from the literal meaning described in the oxford online dictionary, that the horse is a large animal that has four legs and is useful for pulling carriages or other things. Meanwhile, according to the journal article written by Nejad, explaining that the horse is a symbol of soul power and speed. From the picture evidence number 12, the horse animal in the Cinderella film is often used as a mount for traveling. And there are some scenes when some characters want to travel always on horseback or horse-drawn carriage. So, it can be concluded that this horse symbolizes strength and speed.

### B.2.2. Swan

In the *Cinderella* movie, swan lives side by side with Ella's family, and in particular, Ella who always loves swan. The swan has a literal meaning. Described in the online oxford dictionary swan is “a large bird that is usually white and has a long, thin neck. Swans live on or near water” (Oxford University). On the other hands, swan has a literary meaning, in an article written by Kamarova, explains the literary meaning of the swan. Kamarova explained that the meaning of swan is “Swans have long been associated with beauty, majesty, and love. It is presented to us from a different perspective. Such emotions like beauty and the splendour of nature are eternal categories for humans” ( Kamarova 423).



**Picture 13**

**00:01:35**

As explained in the oxford online dictionary, the literal meaning of swan is a group of large, white birds with long necks and long legs, living near water. While



literary meaning as a describe by Kamarova, swan animal symbolizes beauty, beauty, and elegance. Based on the picture evidence number 13, that in the Cinderella movie. Swan lives side by side with Ella's family, and in particular, Ella who always loves Swan. So, it can be concluded that the presence of a swan in this *Cinderella* movie symbolizes elegance.

### **B.2.3. Cat**

Cats also have literal and literary meanings, the literal meanings are taken from the Oxford online dictionary, cat is “a small animal with soft fur that people often keep as a pet. Cats catch and kill birds and mice” (Oxford University). On the other hand, Park explains the literary meaning of cat. Cat is “Shrewdness, betrayal, cruelty, and witches are all bad feminine traits linked with cats. As a result, cats are revered as gods and punished as devils. Cats, like all other basic symbols, convey both good and bad characteristics at the same time. In analytic psychology, there is a lot of research on” (Park 44).



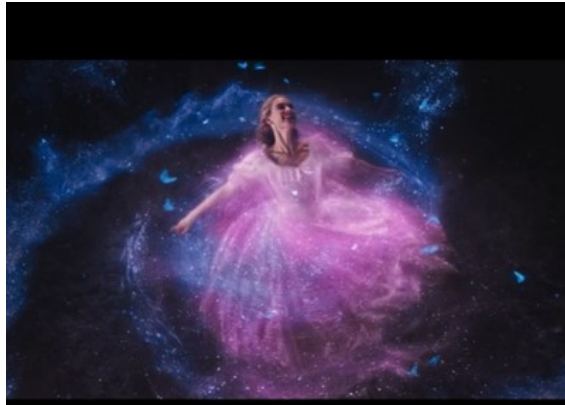
**Picture 14**

**00:19:30**

From the explanation above taken from the Oxford dictionary and from the journal articles written by Park, it can be concluded that, cats are described as small, cute, and close animals to humans, cats also often catch and eat mice. However, in journal articles that were written by park the cat symbolizes femininity, cunning, and represents a witch. And added from photo evidence number 14 taken from scenes in the *Cinderella* movie, this cat is the pet of Ella's stepmother. So, it can be concluded that the presence of a cat is described as small, cute, and close animals to humans, cats also often catch and eat mice. However, in journal articles that were written by park the cat symbolizes femininity, cunning, and represents a witch.

#### **B.2.4. Butterfly**

In the *Cinderella* movie butterfly are also present, the appearance of this butterfly when the fairy godmother conjured Ella's gown, besides that the butterfly also became an accent around the chest in Ella's gown. Butterflies have literal and literary meanings. The literal meanings taken from oxford online dictionary. Based on oxford online dictionary butterflies is “a flying insect with a long thin body and four large, usually brightly colored, wings” (Oxford University). Base on that statement the literal meaning of the butterfly is a small insect animal that has wings and has four legs, usually has a variety of colors.



**Picture 15**

**00:50:10**

On the other hand, the literary meaning is taken from journal articles written by Costa. Butterflies is “The chrysalis is the egg that contains the potentiality of a living person, and the butterfly that emerges from within it is a metaphor of resurrection, a form of emerging from the tomb, according to one part of butterfly symbolism. As a result, the butterfly is associated with this natural phenomenon of successive transformations, which include a state of ideal maturity, a symbolic funeral, and the posthumous fate of the deceased who, after traveling a difficult, rocky road, achieves a state of plenitude in his or her quality as a new osiris. The butterfly takes on a significant semantic importance as a symbol of life that is constantly renewing itself, as well as a sign of rebirth after death” ( Costa 633).



**Picture 16**

**00:50:44**

From the explanation that Costa wrote in his journal article, the literary meaning of this butterfly symbolizes the complete metamorphosis of living things. As seen in the scene in the *Cinderella* movie, seen in the proof of picture number 15 where Cinderella changes her dress to be very nice, there are some butterflies that come around her. And from photo evidence number 16, where many butterfly accents on her dress indicate the perfect transformation that has occurred to Ella from the maid to a very beautiful princess.

### B.2.5. Mouse



Picture 17

00:23:52

According to the Oxford online dictionary, “a small animal that is covered in fur and has a long thin tail. Mice live in fields, in people’s houses or where food is stored” (Oxford University). Based on that explanation, the literal meaning of mouse is a small animal with a long tail, living around human homes. On the other hand, the literary meaning is taken from journal articles written by Nejad et al, mouse is "In Persian literature, the mouse is a symbol of the world's love and greed, as well as a timid and sneaky person who seems to be weak and incapable" (Nejad et al 4).

Based on that statement it can be conclude that, the literal meaning of mouse is a different with the literary meaning. Explained by Nejad et al in his journal article, explaining that the mouse symbolizes the weakness of the soul.

**Cinderella:** Hello, Gus Gus.

[as Gus tries to climb up carrying a piece of cheese]

**Cinderella:** Go on, Gus Gus. You can do it.

[Gus joins the other mice] (00:17:08-00:17:14)

From the evidence of the dialogue, it is seen greeting a mouse named Gus-Gus, he is a mouse who became Ella's friend when Ella lived in Attick. Although, in the *Cinderella* movie does not clearly describe the weakness of Ella, it can be concluded that the presence of mouse, who is Ella's friend, symbolizes that Ella has a weak side, she cannot fight or argue with her stepmother and stepsisters when treated like maids, in his own house.

**Fairy Godmother:** [voice over] How indeed to live? Economies had to be taken. Ella's stepmother dismissed the household.

[we see Ella saying goodbye to the cook and the other servants]

**Fairy Godmother:** [voice over] Her stepmother and stepsisters ever misused her. And by and by they considered Ella less a sister than a servant.

[we see Ella helping Lady Tremaine lace up her shoes]

**Fairy Godmother:** [voice over] And so Ella was left to do all the work. This was a good thing, for it distracted her from her grief. At least that was what her stepmother said. And she and her two daughters were more than happy to provide Ella with lots and lots of distraction.

[we see Ella washing their clothes and cleaning their shoes] (00:22:05-00:23:05)

Then, from the evidence of the narrative, it can be seen that Ella is treated like a maid in her own house by her two stepsisters and stepmother. Ella did not dare to fight and did all the housework alone without any help from others.





## CHAPTER V

### CONCLUSION AND SUGGESTIONS

The following chapter contains conclusions and suggestions. This conclusion is based on research findings to answer the problem formulation, followed by suggestions. From the discussion in the previous chapter, to identify the types of color and animal symbolism in the *Cinderella* movie, and also to find out the literal and literary meaning of color and animal symbolism, how they are depicted in the movie.

#### A. Conclusion

After the analysis of the findings and discussion were completed, the researcher concluded that the *Cinderella* movie has many types of symbolism. Analysis aims for two purposes; The first is to identify what symbolism is present in the *Cinderella* movie, and then to explain the literal and literary meaning of the symbolism that has been found in the *Cinderella* movie. There are two types of symbolism: colors and animals, which are found in the *Cinderella* movie. Here are colors symbolism found, blue, pink, white, black, and yellow. Next, there is the animal symbolism; horse, swan, cat, butterfly, and the last is a mouse.

It can be determined from this study that symbolism plays an essential role in this film. As a result, the *Cinderella* movie contains a variety of symbols to provide an aesthetic effect as well as a deeper meaning. It makes movies more interesting to watch, as well as allowing audiences to notice and appreciate more of the story's symbols and meanings. Symbolism is also employed to visualize various

personalities such as introvert likes Ella, and extrovert likes Ella's stepsisters, and scenarios depending on the illustrations provided throughout the movie narrative.

### **B. Suggestion**

According to the study that has been done before, the *Cinderella* movie contains two different types of symbolism that has been used in the movie. In this study. The researcher is limited by the theory that uses to analyze the movie. So, here are only two categories of symbolisms that can be discussed. From the above explanation, the researcher can advise the readers, so that the readers can use a different theory from the one that has been used with the same data. such as element symbolism, figurative language and so on, allowing all sorts of symbolism found in the *Cinderella* movie to be completely addressed in the future.

Readers can also conduct research on different data with same theory. Such as, the readers can identify the symbolism used in another movie. and also, the readers can analyze the literal and literary meaning of symbols in another movie. So, that the readers can understand it more profoundly about different kinds of symbolism and understand the function and role in a literary work as well. Furthermore, the reader will have no more difficulty in interpreting the meaning of literary work using symbolism.

## REFERENCES

- Costa, Mariana Fernandes. "Free as a Butterfly: Symbology and Palliative Care". 2015, Pp. 631-641.
- Dr. Tavaragi, Meghamala. S. and et al. "Colors and Its Significance". The International Journal of Indian Psychology, Vol. 3, 2016, Pp. 115-131 ISBN: 978-1-329-92551-9.
- Fadaee, Elaheh. "Symbols, Metaphors and Similes in Literature: A Case Study of "Animal Farm". Journal of English and Literature, Vol. 2(2), 2011, Pp. 19-27 ISSN 2141-2626.
- Kamarova, Nagbdu. "Swan As a Symbol of Beauty and Purity in Kazakh Poetry." Procedia Social and Behavioral Sciences, 2014, Pp. 422-426.
- Kwang-Su, Yi. "What Is Literature? (Munhak Iran Hao)". On "The Value of Literature" and "What Is Literature?", 2011, pp. 293-313 DOI: 10.1353.
- Lakshmi, D.Vijaya And et al. "Animal Symbolism in Paulo Coelho's Novels-A Select Study". International Journal of Innovative Research & Studies, Vol. 8, 2018, Pp. 306-313 ISSN NO : 2319-9725.
- Nejad, Ramin Sadegi and et al. "Analysis of Animal Symbols of Carnal Soul in Molana's Thoughts". Bulletin of Environment, Pharmacology and Life Sciences , Vol. 2 , 2013, Pp. 1-5 ISSN 2277-1808.

Ostashchuk, Ivan. "Signs and Symbols: Religios and National Dimensions".  
Journal of Vasyl Stefanyk Precarpathian National University, Vol. 4, No.  
2, 2017, Pp. 88-96 Doi: 10.15330.

Oxford University. "Oxford Learner's Dictionaries." Dictionary, 2021, <  
<https://www.oxfordlearnersdictionaries.com/>>. Accessed 28 September  
2021.

Park, Ae-Kyu. "The Cat: A Symbol Of Femininity". Journal of Symbols &  
Sandplay Therapy, Vol. 6, No. 1 2015, Pp. 43-61.

Patrik Aspers, Ugo Corte. "What is Qualitative in Qualitative Research."  
Qualitative Sociology (2019) 42:139–160 (2019): 23. Web. 3  
December, 2021.

Polkinghorne, Donald E. Language and Meaning: Data collection in qualitative  
research. Journal of counseling Psychology. 52.2. (2005): 137-145. Web  
3 December, 2021.

Ramadhon, Wahyu. "Conventional Symbols in Coco Film by Adrian Molina".  
Undergraduate thesis, Adab and Humanities Faculty State Islamic  
University Sulthan Thaha Saifuddin Jambi. 2020.

Settineri, Salvatore and et al. "The Symbol Theory in S. Freud, C. G. Jung and  
C. S. Peirce". Mediterranean Journal of Clinical Psychology MJCP,  
Vol. 5, No.2 , 2017, Pp. 1-21 ISSN: 2282-161