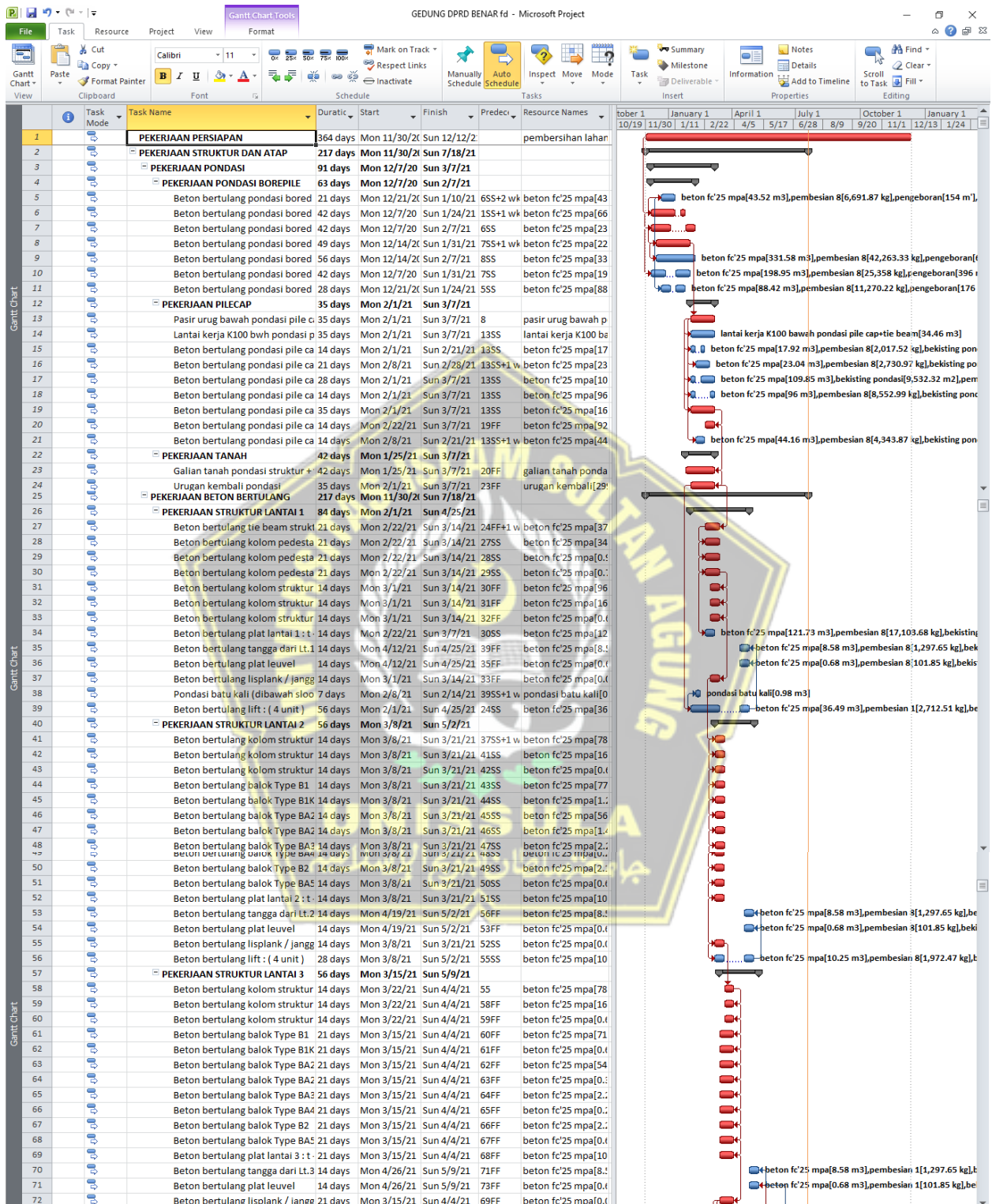


LAMPIRAN

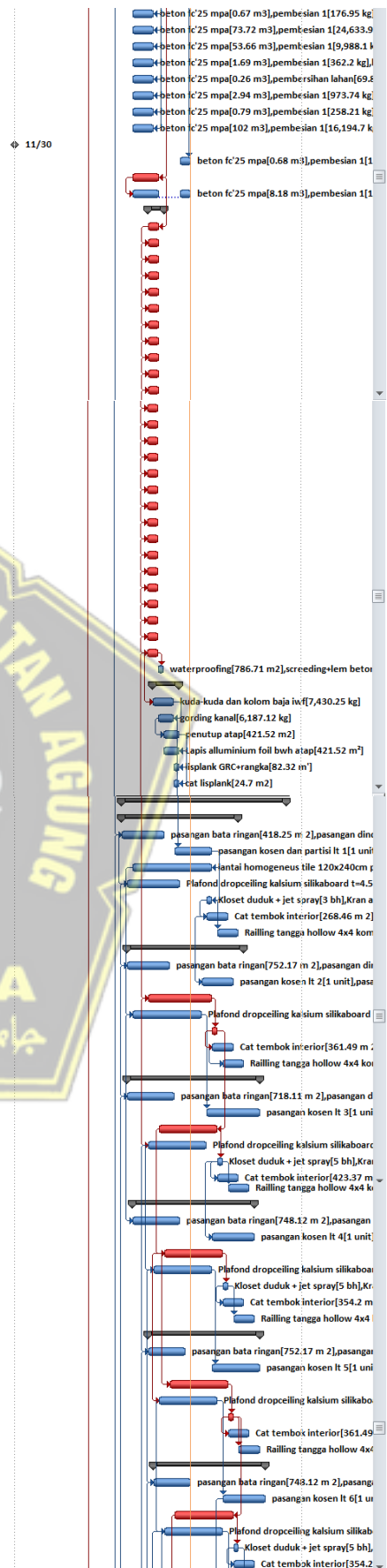


LAMPIRAN 1

BARChart MS. PROJECT PROYEK



169	Beton bertulang kolom struktur	14 days	Mon 5/3/21	Sun 5/30/21	168FF	beton fc'25 mpa[0.1
170	Beton bertulang balok Type B1	14 days	Mon 5/3/21	Sun 5/30/21	169FF	beton fc'25 mpa[73
171	Beton bertulang balok Type BA1	14 days	Mon 5/3/21	Sun 5/30/21	170FF	beton fc'25 mpa[53
172	Beton bertulang balok Type BA2	14 days	Mon 5/3/21	Sun 5/30/21	171FF	beton fc'25 mpa[1.1
173	Beton bertulang balok Type BA4	14 days	Mon 5/3/21	Sun 5/30/21	172FF	beton fc'25 mpa[0.1
174	Beton bertulang balok Type B2	14 days	Mon 5/3/21	Sun 5/30/21	173FF	beton fc'25 mpa[2.5
175	Beton bertulang balok Type BA5	14 days	Mon 5/3/21	Sun 5/30/21	174FF	beton fc'25 mpa[0.1
176	Beton bertulang plat lantai 10 : 1	14 days	Mon 5/3/21	Sun 5/30/21	175FF	beton fc'25 mpa[10
177	Beton bertulang tangga dari Lt.1	0 days	Mon 11/30/21	Mon 11/30/21		beton fc'25 mpa[0 r
178	Beton bertulang plat leuvel	14 days	Mon 7/5/21	Sun 7/18/21	165FS-1	beton fc'25 mpa[0.1
179	Beton bertulang lisplank / jangg	21 days	Mon 5/3/21	Sun 6/6/21	167FF	beton fc'25 mpa[0.1
180	Beton bertulang lift : (2 unit)	35 days	Mon 5/3/21	Sun 7/18/21	179SS	beton fc'25 mpa[8.:
181						
182	PEKERJAAN STRUKTUR LANTAI DA	21 days	Mon 5/24/21	Sun 6/13/21		
183	Beton bertulang kolom struktur	14 days	Mon 5/24/21	Sun 6/6/21	179FF	beton fc'25 mpa[14
184	Beton bertulang kolom struktur	14 days	Mon 5/24/21	Sun 6/6/21	182SS	beton fc'25 mpa[0.:
185	Beton bertulang balok Type BD1	14 days	Mon 5/24/21	Sun 6/6/21	183SS	beton fc'25 mpa[98
186	Beton bertulang balok Type BD1	14 days	Mon 5/24/21	Sun 6/6/21	184SS	beton fc'25 mpa[8.1
187	Beton bertulang balok Type BD:	14 days	Mon 5/24/21	Sun 6/6/21	185SS	beton fc'25 mpa[0.:
188	Beton bertulang balok Type BD:	14 days	Mon 5/24/21	Sun 6/6/21	186SS	beton fc'25 mpa[23
189	Beton bertulang balok Type BD:	14 days	Mon 5/24/21	Sun 6/6/21	187SS	beton fc'25 mpa[4.1
190	Beton bertulang balok Type BD:	14 days	Mon 5/24/21	Sun 6/6/21	188SS	beton fc'25 mpa[8.:
191	Beton bertulang balok Type BD:	14 days	Mon 5/24/21	Sun 6/6/21	189SS	beton fc'25 mpa[1.:
192	Beton bertulang balok Type BA5	14 days	Mon 5/24/21	Sun 6/6/21	190SS	beton fc'25 mpa[0.4
193	Beton bertulang plat daak atap :	14 days	Mon 5/24/21	Sun 6/6/21	191SS	beton fc'25 mpa[78
194	Beton bertulang balok daak tanj	14 days	Mon 5/24/21	Sun 6/6/21	192SS	beton fc'25 mpa[2.:
195	Beton bertulang balok daak tanj	14 days	Mon 5/24/21	Sun 6/6/21	193SS	beton fc'25 mpa[1.1
196	Beton bertulang balok daak tanj	14 days	Mon 5/24/21	Sun 6/6/21	194SS	beton fc'25 mpa[1.1
197	Beton bertulang plat daak tangg	14 days	Mon 5/24/21	Sun 6/6/21	195SS	beton fc'25 mpa[3.:
198	Beton bertulang balok daak tanj	14 days	Mon 5/24/21	Sun 6/6/21	196SS	beton fc'25 mpa[4.:
199	Beton bertulang balok daak tanj	14 days	Mon 5/24/21	Sun 6/6/21	197SS	beton fc'25 mpa[0.4
200	Beton bertulang balok daak tanj	14 days	Mon 5/24/21	Sun 6/6/21	198SS	beton fc'25 mpa[0.1
201	Beton bertulang balok daak tanj	14 days	Mon 5/24/21	Sun 6/6/21	199SS	beton fc'25 mpa[0.:
202	Beton bertulang balok daak tanj	14 days	Mon 5/24/21	Sun 6/6/21	200SS	beton fc'25 mpa[0.:
203	Beton bertulang balok daak tanj	14 days	Mon 5/24/21	Sun 6/6/21	201SS	beton fc'25 mpa[0.:
204	Beton bertulang plat daak tangg	14 days	Mon 5/24/21	Sun 6/6/21	202SS	beton fc'25 mpa[0.:
205	Beton bertulang balok daak lift -	14 days	Mon 5/24/21	Sun 6/6/21	203SS	beton fc'25 mpa[3.:
206	Beton bertulang balok daak lift -	14 days	Mon 5/24/21	Sun 6/6/21	204SS	beton fc'25 mpa[8.:
207	Beton bertulang balok daak lift -	14 days	Mon 5/24/21	Sun 6/6/21	205SS	beton fc'25 mpa[4.1
208	Beton bertulang plat daak lift : t	14 days	Mon 5/24/21	Sun 6/6/21	206SS	beton fc'25 mpa[8.:
209	Beton bertulang konsol	14 days	Mon 5/24/21	Sun 6/6/21	207SS	beton fc'25 mpa[9.4
210	Waterproofing Neothane System	7 days	Mon 6/7/21	Sun 6/13/21	208	waterproofing[786.
211	PEKERJAAN RANGKA ATAP & ATAF	35 days	Mon 5/31/21	Sun 7/4/21		
212	Kuda2 dan kolom baja IWF,plat	28 days	Mon 5/31/21	Sun 6/27/21	208SS+1	kuda-kuda dan kolom
213	Gording kanal 2C 150.65.20.2.3	+ 21 days	Mon 6/7/21	Sun 6/27/21	211FF	gording kanal[6,18;
214	Penutup Atap :	21 days	Mon 6/14/21	Sun 7/4/21	212SS	penutup atap[421.5
215	Lapis alluminium foil bwh atap	21 days	Mon 6/14/21	Sun 7/4/21	213FF	Lapis alluminium fo
216	Lisplank GRC + rangka	7 days	Mon 6/28/21	Sun 7/4/21	214FF	lisplank GRC+rangka
217	Cat lisplank	7 days	Mon 6/28/21	Sun 7/4/21	215FF	Cat lisplank[24.7 m
218	PEKERJAAN FINISHING ARSITEKTUR	203 days	Mon 4/19/21	Sun 11/21/21		
219	PEKERJAAN FINISHING ARSITEKTUR L	140 days	Mon 4/19/21	Sun 9/19/21		
220	PEK. PAS. BT. BATA / PLESTERAN	42 days	Mon 4/19/21	Sun 6/13/21	150SS	pasangan bata ringa
221	PEK. PAS. KOSEN & PARTISI	49 days	Mon 6/28/21	Sun 8/15/21	212	pasangan kosen dan
222	PEK. PASANG LANTAI DAN DINDIN	91 days	Mon 5/3/21	Sun 8/15/21	220FF	lantai homogeneous
223	PEK. PLAFOND	56 days	Mon 4/26/21	Sun 7/4/21	219SS+1	Plafond dropceiling
224	PEK. SANITAIR	7 days	Mon 8/9/21	Sun 8/15/21	221FF	Kloset duduk + jet s
225	PEK. CAT-CATAN	28 days	Mon 8/9/21	Sun 9/5/21	223SS	Cat tembok interior
226	PEK. LAIN-LAIN	28 days	Mon 8/23/21	Sun 9/19/21	223FS+1	Railling tangga holl
227	PEKERJAAN FINISHING ARSITEKTUR L	140 days	Mon 4/26/21	Sun 9/26/21		
228	PEK. PAS. BT. BATA / PLESTERAN	42 days	Mon 4/26/21	Sun 6/20/21	222SS	pasangan bata ringa
229	PEK. PAS. KOSEN & PARTISI	42 days	Mon 8/2/21	Sun 9/12/21	224SS-1	pasangan kosen It 2
230	PEK. PASANG LANTAI DAN DINDING	84 days	Mon 5/24/21	Sun 8/15/21	208SS	Lantai Homogeneous T
231	PEK. PLAFOND	77 days	Mon 5/3/21	Sun 8/1/21	221SS	Plafond dropceiling k
232	PEK. SANITAIR	7 days	Mon 8/16/21	Sun 8/22/21	229	Kloset duduk + jet spr
233	PEK. CAT-CATAN	28 days	Mon 8/16/21	Sun 9/12/21	231SS	Cat tembok interior[3
234	PEK. LAIN-LAIN	28 days	Mon 8/30/21	Sun 9/26/21	232SS+2	Railling tangga holl
235	PEKERJAAN FINISHING ARSITEKTUR LANTA	161 days	Mon 4/26/21	Sun 10/17/21		
236	PEK. PAS. BT. BATA / PLESTERAN	49 days	Mon 4/26/21	Sun 6/27/21	227SS	pasangan bata ringa
237	PEK. PAS. KOSEN & PARTISI	70 days	Mon 8/9/21	Sun 10/17/21	230FS+1	pasangan kosen It 3[
238	PEK. PASANG LANTAI DAN DINDING	77 days	Mon 6/7/21	Sun 8/22/21	231FF	lantai homogeneous ti
239	PEK. PLAFOND	77 days	Mon 5/24/21	Sun 8/8/21	229SS	Plafond dropceiling k
240	PEK. SANITAIR	7 days	Mon 8/23/21	Sun 8/29/21	237	Kloset duduk + jet spr
241	PEK. CAT-CATAN	28 days	Mon 8/23/21	Sun 9/19/21	239SS	Cat tembok interior[4
242	PEK. LAIN-LAIN	28 days	Mon 9/6/21	Sun 10/3/21	239FS+1	Railling tangga holl
243	PEKERJAAN FINISHING ARSITEKTUR LANTA	147 days	Mon 5/3/21	Sun 10/10/21		
244	PEK. PAS. BT. BATA / PLESTERAN	49 days	Mon 5/3/21	Sun 7/4/21	230SS	pasangan bata ringa
245	PEK. PAS. KOSEN & PARTISI	56 days	Mon 8/16/21	Sun 10/10/21	239SS-1	pasangan kosen It 4[
246	PEK. PASANG LANTAI DAN DINDING	77 days	Mon 6/14/21	Sun 8/29/21	237SS+1	Lantai Homogeneous T
247	PEK. PLAFOND	77 days	Mon 5/31/21	Sun 8/15/21	238SS+1	Plafond dropceiling k
248	PEK. SANITAIR	7 days	Mon 8/30/21	Sun 9/5/21	245	Kloset duduk + jet spr
249	PEK. CAT-CATAN	28 days	Mon 8/30/21	Sun 9/26/21	247SS	Cat tembok interior[3
250	PEK. LAIN-LAIN	28 days	Mon 9/13/21	Sun 10/10/21	247FS+1	Railling tangga holl
251	PEKERJAAN FINISHING ARSITEKTUR LANTA	147 days	Mon 5/24/21	Sun 10/17/21		
252	PEK. PAS. BT. BATA / PLESTERAN	49 days	Mon 5/24/21	Sun 7/11/21	238SS	pasangan bata ringa
253	PEK. PAS. KOSEN & PARTISI	63 days	Mon 8/16/21	Sun 10/17/21	246	pasangan kosen It 5[
254	PEK. PASANG LANTAI DAN DINDING	77 days	Mon 6/21/21	Sun 9/5/21	245SS+1	Lantai Homogeneous T
255	PEK. PLAFOND	77 days	Mon 6/7/21	Sun 8/22/21	245SS-1	Plafond dropceiling k
256	PEK. SANITAIR	7 days	Mon 9/6/21	Sun 9/12/21	253	Kloset duduk + jet spr
257	PEK. CAT-CATAN	28 days	Mon 9/6/21	Sun 10/3/21	255SS	Cat tembok interior[3
258	PEK. LAIN-LAIN	28 days	Mon 9/20/21	Sun 10/17/21	255FS+1	Railling tangga holl
259	PEKERJAAN FINISHING ARSITEKTUR LANTA	147 days	Mon 5/31/21	Sun 10/24/21		
260	PEK. PAS. BT. BATA / PLESTERAN	49 days	Mon 5/31/21	Sun 7/18/21	246SS	pasangan bata ringa
261	PEK. PAS. KOSEN & PARTISI	56 days	Mon 8/30/21	Sun 10/24/21	254FS+1	pasangan kosen It 6[
262	PEK. PASANG LANTAI DAN DINDING	77 days	Mon 6/28/21	Sun 9/12/21	255FF	Lantai Homogeneous T
263	PEK. PLAFOND	77 days	Mon 6/14/21	Sun 8/29/21	254SS+1	Plafond dropceiling k
264	PEK. SANITAIR	7 days	Mon 9/13/21	Sun 9/19/21	261	Kloset duduk + jet spr
265	PEK. CAT-CATAN	28 days	Mon 9/13/21	Sun 10/10/21	263SS	Cat tembok interior[3

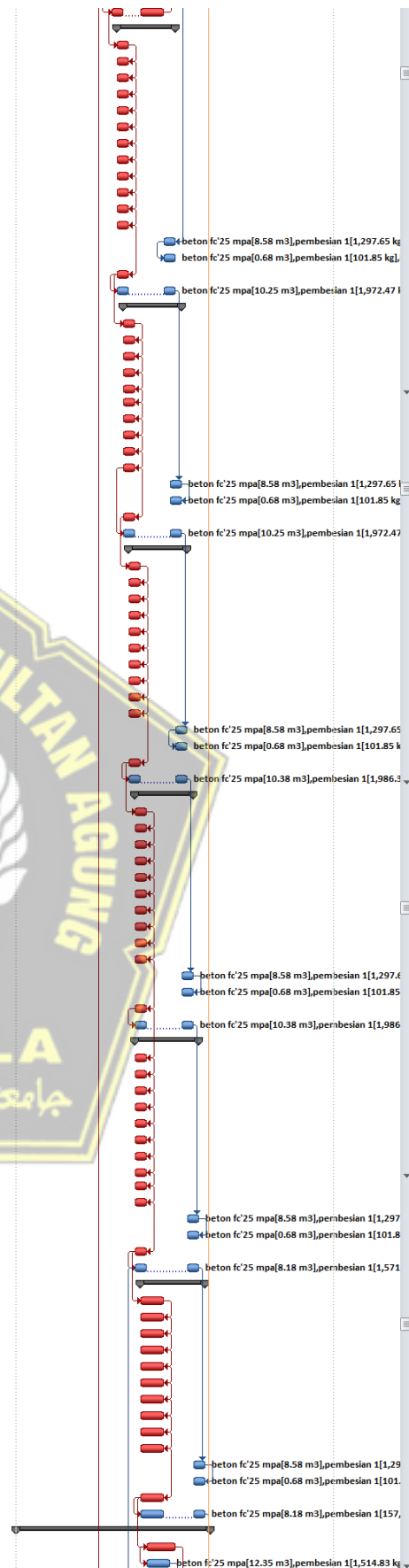


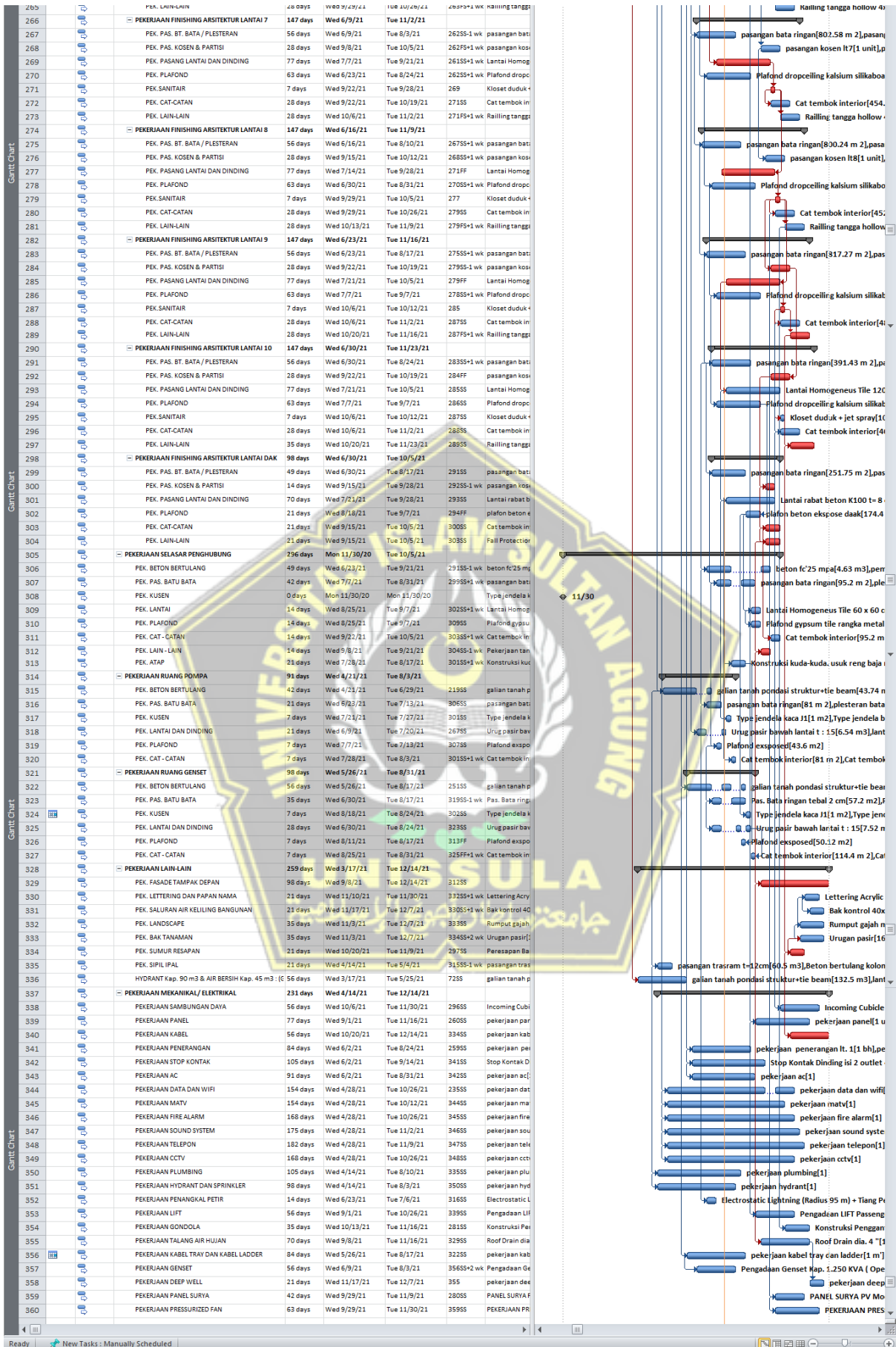
LAMPIRAN 2

BARChart MS. PROJECT METODE CRASHING



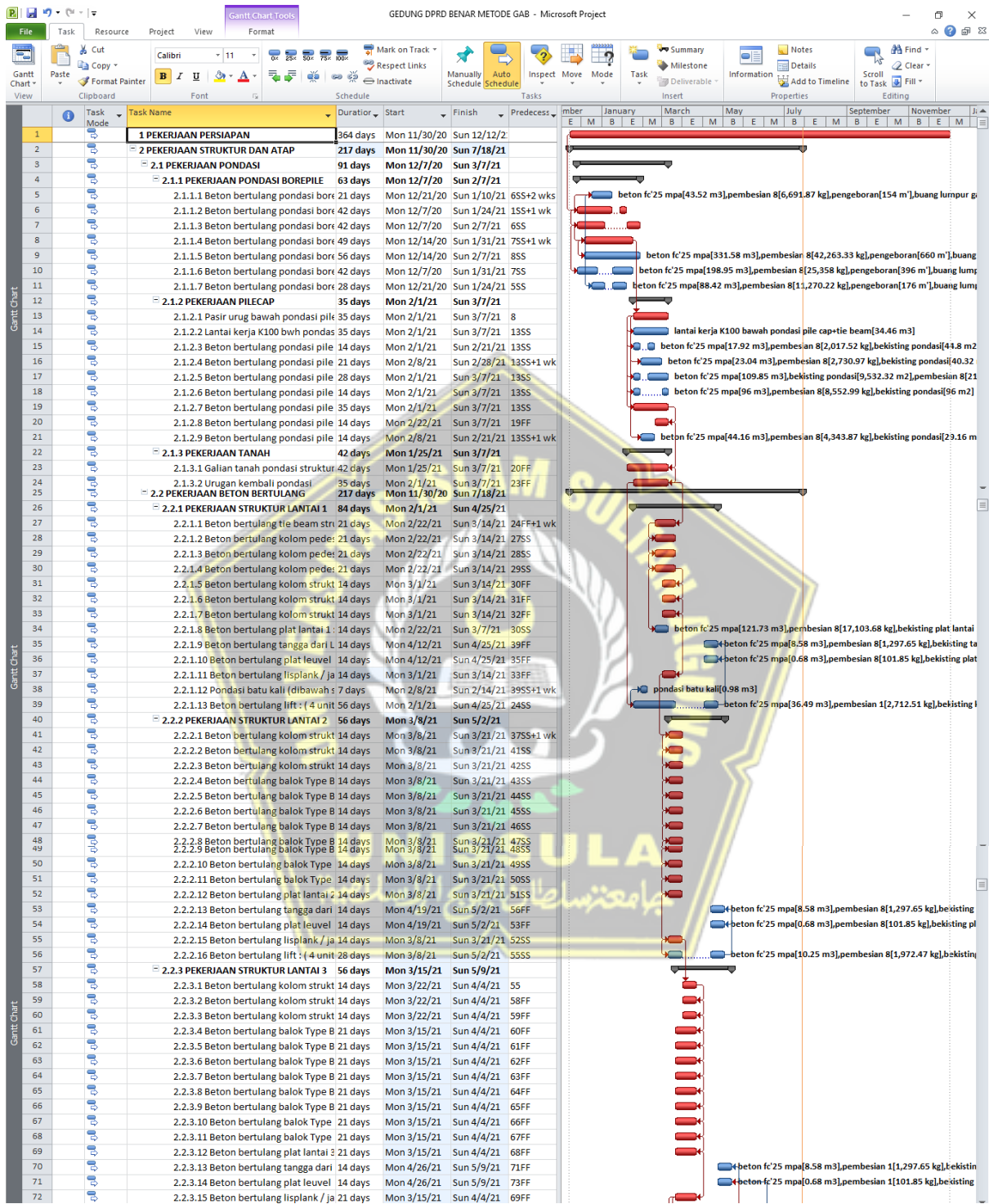
73	Beton bertulang lift : (4 unit)	28 days	Wed 3/24/21	Tue 5/25/21	725S+1 w	beton fc'25
74	PEKERJAAN STRUKTUR LANTAI 4	56 days	Wed 3/31/21	Tue 6/8/21		
75	Beton bertulang kolom struktur	14 days	Wed 3/31/21	Tue 4/13/21	735S+1 w	beton fc'25
76	Beton bertulang kolom struktur	14 days	Wed 3/31/21	Tue 4/13/21	75FF	beton fc'25
77	Beton bertulang kolom struktur	14 days	Wed 3/31/21	Tue 4/13/21	76FF	beton fc'25
78	Beton bertulang balok Type B1	14 days	Wed 3/31/21	Tue 4/13/21	77FF	beton fc'25
79	Beton bertulang balok Type B1K	14 days	Wed 3/31/21	Tue 4/13/21	78FF	beton fc'25
80	Beton bertulang balok Type BA2	14 days	Wed 3/31/21	Tue 4/13/21	79FF	beton fc'25
81	Beton bertulang balok Type BA2	14 days	Wed 3/31/21	Tue 4/13/21	80FF	beton fc'25
82	Beton bertulang balok Type BA3	14 days	Wed 3/31/21	Tue 4/13/21	81FF	beton fc'25
83	Beton bertulang balok Type BA4	14 days	Wed 3/31/21	Tue 4/13/21	82FF	beton fc'25
84	Beton bertulang balok Type B2	14 days	Wed 3/31/21	Tue 4/13/21	83FF	beton fc'25
85	Beton bertulang balok Type BA5	14 days	Wed 3/31/21	Tue 4/13/21	84FF	beton fc'25
86	Beton bertulang plat lantai 4 : t	14 days	Wed 3/31/21	Tue 4/13/21	85FF	beton fc'25
87	Beton bertulang tangga dari Lt.4	14 days	Wed 5/26/21	Tue 6/8/21	71FF+2 w	beton fc'25
88	Beton bertulang plat leuvel	14 days	Wed 5/26/21	Tue 6/8/21	87SS	beton fc'25
89	Beton bertulang lisplank / jangg	14 days	Wed 3/31/21	Tue 4/13/21	86FF	beton fc'25
90	Beton bertulang lift : (4 unit)	28 days	Wed 3/31/21	Tue 6/8/21	89SS	beton fc'25
91	PEKERJAAN STRUKTUR LANTAI 5	56 days	Wed 4/7/21	Tue 6/15/21		
92	Beton bertulang kolom struktur	14 days	Wed 4/7/21	Tue 4/20/21	89SS+1 w	beton fc'25
93	Beton bertulang kolom struktur	14 days	Wed 4/7/21	Tue 4/20/21	92FF	beton fc'25
94	Beton bertulang kolom struktur	14 days	Wed 4/7/21	Tue 4/20/21	93FF	beton fc'25
95	Beton bertulang balok Type B1	14 days	Wed 4/7/21	Tue 4/20/21	94FF	beton fc'25
96	Beton bertulang balok Type BA2	14 days	Wed 4/7/21	Tue 4/20/21	95FF	beton fc'25
97	Beton bertulang balok Type BA3	14 days	Wed 4/7/21	Tue 4/20/21	96FF	beton fc'25
98	Beton bertulang balok Type BA4	14 days	Wed 4/7/21	Tue 4/20/21	97FF	beton fc'25
99	Beton bertulang balok Type B2	14 days	Wed 4/7/21	Tue 4/20/21	98FF	beton fc'25
100	Beton bertulang balok Type BA5	14 days	Wed 4/7/21	Tue 4/20/21	99FF	beton fc'25
101	Beton bertulang plat lantai 5 : t	14 days	Wed 4/7/21	Tue 4/20/21	100FF	beton fc'25
102	Beton bertulang tangga dari Lt.5	14 days	Wed 6/2/21	Tue 6/15/21	90FS-1 w	beton fc'25
103	Beton bertulang plat leuvel	14 days	Wed 6/2/21	Tue 6/15/21	102FF	beton fc'25
104	Beton bertulang lisplank / jangg	14 days	Wed 4/7/21	Tue 4/20/21	101FF	beton fc'25
105	Beton bertulang lift : (4 unit)	28 days	Wed 4/7/21	Tue 6/15/21	101SS	beton fc'25
106	PEKERJAAN STRUKTUR LANTAI 6	56 days	Wed 4/14/21	Tue 6/22/21		
107	Beton bertulang kolom struktur	14 days	Wed 4/14/21	Tue 4/27/21	104SS+1 w	beton fc'25
108	Beton bertulang kolom struktur	14 days	Wed 4/14/21	Tue 4/27/21	107FF	beton fc'25
109	Beton bertulang kolom struktur	14 days	Wed 4/14/21	Tue 4/27/21	108FF	beton fc'25
110	Beton bertulang balok Type B1	14 days	Wed 4/14/21	Tue 4/27/21	109FF	beton fc'25
111	Beton bertulang balok Type BA2	14 days	Wed 4/14/21	Tue 4/27/21	110FF	beton fc'25
112	Beton bertulang balok Type BA3	14 days	Wed 4/14/21	Tue 4/27/21	111FF	beton fc'25
113	Beton bertulang balok Type BA4	14 days	Wed 4/14/21	Tue 4/27/21	112FF	beton fc'25
114	Beton bertulang balok Type B2	14 days	Wed 4/14/21	Tue 4/27/21	113FF	beton fc'25
115	Beton bertulang balok Type BA5	14 days	Wed 4/14/21	Tue 4/27/21	114FF	beton fc'25
116	Beton bertulang plat lantai 6 : t	14 days	Wed 4/14/21	Tue 4/27/21	115FF	beton fc'25
117	Beton bertulang tangga dari Lt.6	14 days	Wed 6/9/21	Tue 6/22/21	105FS-1 w	beton fc'25
118	Beton bertulang plat leuvel	14 days	Wed 6/9/21	Tue 6/22/21	117SS	beton fc'25
119	Beton bertulang lisplank / jangg	14 days	Wed 4/14/21	Tue 4/27/21	116FF	beton fc'25
120	Beton bertulang lift : (4 unit)	28 days	Wed 4/14/21	Tue 6/22/21	119SS	beton fc'25
121	PEKERJAAN STRUKTUR LANTAI 7	56 days	Wed 4/21/21	Tue 6/29/21		
122	Beton bertulang kolom struktur	14 days	Wed 4/21/21	Tue 5/4/21	119SS+1 w	beton fc'25
123	Beton bertulang kolom struktur	14 days	Wed 4/21/21	Tue 5/4/21	122FF	beton fc'25
124	Beton bertulang kolom struktur	14 days	Wed 4/21/21	Tue 5/4/21	123FF	beton fc'25
125	Beton bertulang balok Type B1	14 days	Wed 4/21/21	Tue 5/4/21	124FF	beton fc'25
126	Beton bertulang balok Type BA2	14 days	Wed 4/21/21	Tue 5/4/21	125FF	beton fc'25
127	Beton bertulang balok Type BA3	14 days	Wed 4/21/21	Tue 5/4/21	126FF	beton fc'25
128	Beton bertulang balok Type BA4	14 days	Wed 4/21/21	Tue 5/4/21	127FF	beton fc'25
129	Beton bertulang balok Type B2	14 days	Wed 4/21/21	Tue 5/4/21	128FF	beton fc'25
130	Beton bertulang balok Type BA5	14 days	Wed 4/21/21	Tue 5/4/21	129FF	beton fc'25
131	Beton bertulang plat lantai 7 : t	14 days	Wed 4/21/21	Tue 5/4/21	130FF	beton fc'25
132	Beton bertulang tangga dari Lt.7	14 days	Wed 6/16/21	Tue 6/29/21	120FS-1 w	beton fc'25
133	Beton bertulang plat leuvel	14 days	Wed 6/16/21	Tue 6/29/21	132FF	beton fc'25
134	Beton bertulang lisplank / jangg	14 days	Wed 4/21/21	Tue 5/4/21	131FF	beton fc'25
135	Beton bertulang lift : (2 unit)	28 days	Wed 4/21/21	Tue 6/29/21	134SS	beton fc'25
136	PEKERJAAN STRUKTUR LANTAI 8	63 days	Wed 4/21/21	Tue 7/6/21		
137	Beton bertulang kolom struktur	14 days	Wed 4/21/21	Tue 5/4/21	134FF	beton fc'25
138	Beton bertulang kolom struktur	14 days	Wed 4/21/21	Tue 5/4/21	137FF	beton fc'25
139	Beton bertulang kolom struktur	14 days	Wed 4/21/21	Tue 5/4/21	138FF	beton fc'25
140	Beton bertulang balok Type B1	14 days	Wed 4/21/21	Tue 5/4/21	139FF	beton fc'25
141	Beton bertulang balok Type BA2	14 days	Wed 4/21/21	Tue 5/4/21	140FF	beton fc'25
142	Beton bertulang balok Type BA3	14 days	Wed 4/21/21	Tue 5/4/21	141FF	beton fc'25
143	Beton bertulang balok Type BA4	14 days	Wed 4/21/21	Tue 5/4/21	142FF	beton fc'25
144	Beton bertulang balok Type B2	14 days	Wed 4/21/21	Tue 5/4/21	143FF	beton fc'25
145	Beton bertulang balok Type BA5	14 days	Wed 4/21/21	Tue 5/4/21	144FF	beton fc'25
146	Beton bertulang plat lantai 8 : t	14 days	Wed 4/21/21	Tue 5/4/21	145FF	beton fc'25
147	Beton bertulang tangga dari Lt.8	14 days	Wed 6/23/21	Tue 7/6/21	135FS-1 w	beton fc'25
148	Beton bertulang plat leuvel	14 days	Wed 6/23/21	Tue 7/6/21	147FF	beton fc'25
149	Beton bertulang lisplank / jangg	14 days	Wed 4/21/21	Tue 5/4/21	146FF	beton fc'25
150	Beton bertulang lift : (2 unit)	28 days	Wed 4/21/21	Tue 7/6/21	149SS	beton fc'25
151	PEKERJAAN STRUKTUR LANTAI 9	63 days	Wed 4/28/21	Tue 7/13/21		
152	Beton bertulang kolom struktur type K2	14 days	Wed 4/28/21	Tue 5/25/21	149SS+1 wk	beton fc'25 m3
153	Beton bertulang kolom struktur type K3	14 days	Wed 4/28/21	Tue 5/25/21	152FF	beton fc'25 m3
154	Beton bertulang kolom struktur type K4	14 days	Wed 4/28/21	Tue 5/25/21	153FF	beton fc'25 m3
155	Beton bertulang balok Type B1	14 days	Wed 4/28/21	Tue 5/25/21	154FF	beton fc'25 m3
156	Beton bertulang balok Type BA2	14 days	Wed 4/28/21	Tue 5/25/21	155FF	beton fc'25 m3
157	Beton bertulang balok Type BA3	14 days	Wed 4/28/21	Tue 5/25/21	156FF	beton fc'25 m3
158	Beton bertulang balok Type BA4	14 days	Wed 4/28/21	Tue 5/25/21	157FF	beton fc'25 m3
159	Beton bertulang balok Type B2	14 days	Wed 4/28/21	Tue 5/25/21	158FF	beton fc'25 m3
160	Beton bertulang balok Type BA5	14 days	Wed 4/28/21	Tue 5/25/21	159FF	beton fc'25 m3
161	Beton bertulang plat lantai 9 : t - 12 cm	14 days	Wed 4/28/21	Tue 5/25/21	160FF	beton fc'25 m3
162	Beton bertulang tangga dari Lt.9 ke Lt.10	14 days	Wed 6/30/21	Tue 7/13/21	150FS-1 wk	beton fc'25 m3
163	Beton bertulang plat leuvel	14 days	Wed 6/30/21	Tue 7/13/21	162FF	beton fc'25 m3
164	Beton bertulang lisplank / jangg	14 days	Wed 4/28/21	Tue 5/25/21	161FF	beton fc'25 m3
165	Beton bertulang lift : (2 unit)	28 days	Wed 4/28/21	Tue 7/13/21	164SS	beton fc'25 m3
166	PEKERJAAN STRUKTUR LANTAI 10	219 days	Mon 11/30/20	Tue 7/20/21		
167	Beton bertulang kolom struktur type K2	21 days	Wed 5/5/21	Tue 6/8/21	164SS+1 wk	beton fc'25 m3
168	Beton bertulang kolom struktur type K3	14 days	Wed 5/5/21	Tue 6/13/21	167SS	beton fc'25 m3



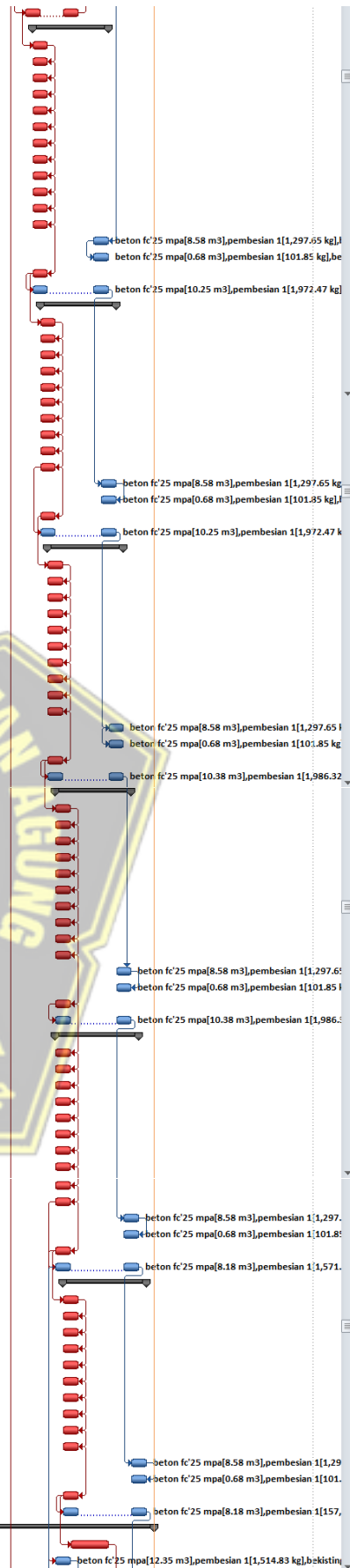


LAMPIRAN 3

BARChart MS. PROJECT METODE OVERLAPPING

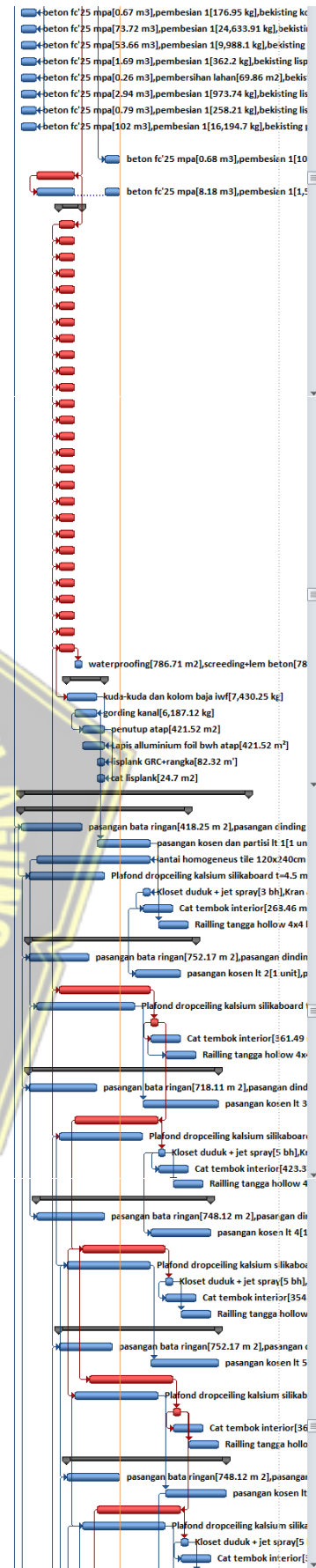


73		2.2.3.16 Beton bertulang lift : (4 unit 28 days	Mon 3/22/21	Sun 5/9/21	72SS+1 wk
74		2.2.4 PEKERJAAN STRUKTUR LANTAI 4 56 days	Mon 3/29/21	Sun 6/6/21	
75		2.2.4.1 Beton bertulang kolom strukt 14 days	Mon 3/29/21	Sun 4/11/21	73SS+1 wk
76		2.2.4.2 Beton bertulang kolom strukt 14 days	Mon 3/29/21	Sun 4/11/21	75FF
77		2.2.4.3 Beton bertulang kolom strukt 14 days	Mon 3/29/21	Sun 4/11/21	76FF
78		2.2.4.4 Beton bertulang balok Type B 14 days	Mon 3/29/21	Sun 4/11/21	77FF
79		2.2.4.5 Beton bertulang balok Type B 14 days	Mon 3/29/21	Sun 4/11/21	78FF
80		2.2.4.6 Beton bertulang balok Type B 14 days	Mon 3/29/21	Sun 4/11/21	79FF
81		2.2.4.7 Beton bertulang balok Type B 14 days	Mon 3/29/21	Sun 4/11/21	80FF
82		2.2.4.8 Beton bertulang balok Type B 14 days	Mon 3/29/21	Sun 4/11/21	81FF
83		2.2.4.9 Beton bertulang balok Type B 14 days	Mon 3/29/21	Sun 4/11/21	82FF
84		2.2.4.10 Beton bertulang balok Type 14 days	Mon 3/29/21	Sun 4/11/21	83FF
85		2.2.4.11 Beton bertulang balok Type 14 days	Mon 3/29/21	Sun 4/11/21	84FF
86		2.2.4.12 Beton bertulang plat lantai 4 14 days	Mon 3/29/21	Sun 4/11/21	85FF
87		2.2.4.13 Beton bertulang tangga dari 14 days	Mon 5/24/21	Sun 6/6/21	71FF+2 wk
88		2.2.4.14 Beton bertulang plat leuvel 14 days	Mon 5/24/21	Sun 6/6/21	87SS
89		2.2.4.15 Beton bertulang lisplank / ja 14 days	Mon 3/29/21	Sun 4/11/21	86FF
90		2.2.4.16 Beton bertulang lift : (4 unit 28 days	Mon 3/29/21	Sun 6/6/21	89SS
91		2.2.5 PEKERJAAN STRUKTUR LANTAI 5 56 days	Mon 4/5/21	Sun 6/13/21	
92		2.2.5.1 Beton bertulang kolom strukt 14 days	Mon 4/5/21	Sun 4/18/21	89SS+1 wk
93		2.2.5.2 Beton bertulang kolom strukt 14 days	Mon 4/5/21	Sun 4/18/21	92FF
94		2.2.5.3 Beton bertulang kolom strukt 14 days	Mon 4/5/21	Sun 4/18/21	93FF
95		2.2.5.4 Beton bertulang balok Type B 14 days	Mon 4/5/21	Sun 4/18/21	94FF
96		2.2.5.5 Beton bertulang balok Type B 14 days	Mon 4/5/21	Sun 4/18/21	95FF
97		2.2.5.6 Beton bertulang balok Type B 14 days	Mon 4/5/21	Sun 4/18/21	96FF
98		2.2.5.7 Beton bertulang balok Type B 14 days	Mon 4/5/21	Sun 4/18/21	97FF
99		2.2.5.8 Beton bertulang balok Type B 14 days	Mon 4/5/21	Sun 4/18/21	98FF
100		2.2.5.9 Beton bertulang balok Type B 14 days	Mon 4/5/21	Sun 4/18/21	99FF
101		2.2.5.10 Beton bertulang plat lantai 5 14 days	Mon 4/5/21	Sun 4/18/21	100FF
102		2.2.5.11 Beton bertulang tangga dari 14 days	Mon 5/31/21	Sun 6/13/21	90FS-1 wk
103		2.2.5.12 Beton bertulang plat leuvel 14 days	Mon 5/31/21	Sun 6/13/21	102FF
104		2.2.5.13 Beton bertulang lisplank / ja 14 days	Mon 4/5/21	Sun 4/18/21	101FF
105		2.2.5.14 Beton bertulang lift : (4 unit 28 days	Mon 4/5/21	Sun 6/13/21	101SS
106		2.2.6 PEKERJAAN STRUKTUR LANTAI 6 56 days	Mon 4/12/21	Sun 6/20/21	
107		2.2.6.1 Beton bertulang kolom strukt 14 days	Mon 4/12/21	Sun 4/25/21	104SS+1 w
108		2.2.6.2 Beton bertulang kolom strukt 14 days	Mon 4/12/21	Sun 4/25/21	107FF
109		2.2.6.3 Beton bertulang kolom strukt 14 days	Mon 4/12/21	Sun 4/25/21	108FF
110		2.2.6.4 Beton bertulang balok Type B 14 days	Mon 4/12/21	Sun 4/25/21	109FF
111		2.2.6.5 Beton bertulang balok Type B 14 days	Mon 4/12/21	Sun 4/25/21	110FF
112		2.2.6.6 Beton bertulang balok Type B 14 days	Mon 4/12/21	Sun 4/25/21	111FF
113		2.2.6.7 Beton bertulang balok Type B 14 days	Mon 4/12/21	Sun 4/25/21	112FF
114		2.2.6.8 Beton bertulang balok Type B 14 days	Mon 4/12/21	Sun 4/25/21	113FF
115		2.2.6.9 Beton bertulang balok Type B 14 days	Mon 4/12/21	Sun 4/25/21	114FF
116		2.2.6.10 Beton bertulang plat lantai 6 14 days	Mon 4/12/21	Sun 4/25/21	115FF
117		2.2.6.11 Beton bertulang tangga dari 14 days	Mon 6/7/21	Sun 6/20/21	105FS-1 w
118		2.2.6.12 Beton bertulang plat leuvel 14 days	Mon 6/7/21	Sun 6/20/21	117SS
119		2.2.6.13 Beton bertulang lisplank / ja 14 days	Mon 4/12/21	Sun 4/25/21	116FF
120		2.2.6.14 Beton bertulang lift : (4 unit 28 days	Mon 4/12/21	Sun 6/20/21	119SS
121		2.2.7 PEKERJAAN STRUKTUR LANTAI 7 56 days	Mon 4/19/21	Sun 6/27/21	
122		2.2.7.1 Beton bertulang kolom strukt 14 days	Mon 4/19/21	Sun 5/2/21	119SS+1 w
123		2.2.7.2 Beton bertulang kolom strukt 14 days	Mon 4/19/21	Sun 5/2/21	122FF
124		2.2.7.3 Beton bertulang kolom strukt 14 days	Mon 4/19/21	Sun 5/2/21	123FF
125		2.2.7.4 Beton bertulang balok Type B 14 days	Mon 4/19/21	Sun 5/2/21	124FF
126		2.2.7.5 Beton bertulang balok Type B 14 days	Mon 4/19/21	Sun 5/2/21	125FF
127		2.2.7.6 Beton bertulang balok Type B 14 days	Mon 4/19/21	Sun 5/2/21	126FF
128		2.2.7.7 Beton bertulang balok Type B 14 days	Mon 4/19/21	Sun 5/2/21	127FF
129		2.2.7.8 Beton bertulang balok Type B 14 days	Mon 4/19/21	Sun 5/2/21	128FF
130		2.2.7.9 Beton bertulang balok Type B 14 days	Mon 4/19/21	Sun 5/2/21	129FF
131		2.2.7.10 Beton bertulang plat lantai 7 14 days	Mon 4/19/21	Sun 5/2/21	130FF
132		2.2.7.11 Beton bertulang tangga dari 14 days	Mon 6/14/21	Sun 6/27/21	120FS-1 w
133		2.2.7.12 Beton bertulang plat leuvel 14 days	Mon 6/14/21	Sun 6/27/21	132FF
134		2.2.7.13 Beton bertulang lisplank / ja 14 days	Mon 4/19/21	Sun 5/2/21	131FF
135		2.2.7.14 Beton bertulang lift : (2 unit 28 days	Mon 4/19/21	Sun 6/27/21	134SS
136		2.2.8 PEKERJAAN STRUKTUR LANTAI 8 63 days	Mon 4/19/21	Sun 7/4/21	
137		2.2.8.1 Beton bertulang kolom strukt 14 days	Mon 4/19/21	Sun 5/2/21	134FF
138		2.2.8.2 Beton bertulang kolom strukt 14 days	Mon 4/19/21	Sun 5/2/21	137FF
139		2.2.8.3 Beton bertulang kolom strukt 14 days	Mon 4/19/21	Sun 5/2/21	138FF
140		2.2.8.4 Beton bertulang balok Type B 14 days	Mon 4/19/21	Sun 5/2/21	139FF
141		2.2.8.5 Beton bertulang balok Type B 14 days	Mon 4/19/21	Sun 5/2/21	140FF
142		2.2.8.6 Beton bertulang balok Type B 14 days	Mon 4/19/21	Sun 5/2/21	141FF
143		2.2.8.7 Beton bertulang balok Type B 14 days	Mon 4/19/21	Sun 5/2/21	142FF
144		2.2.8.8 Beton bertulang balok Type B 14 days	Mon 4/19/21	Sun 5/2/21	143FF
145		2.2.8.9 Beton bertulang balok Type B 14 days	Mon 4/19/21	Sun 5/2/21	144FF
146		2.2.8.10 Beton bertulang plat lantai 8 14 days	Mon 4/19/21	Sun 5/2/21	145FF
147		2.2.8.11 Beton bertulang tangga dari 14 days	Mon 6/21/21	Sun 7/4/21	135FS-1 w
148		2.2.8.12 Beton bertulang plat leuvel 14 days	Mon 6/21/21	Sun 7/4/21	147FF
149		2.2.8.13 Beton bertulang lisplank / ja 14 days	Mon 4/19/21	Sun 5/2/21	146FF
150		2.2.8.14 Beton bertulang lift : (2 unit 28 days	Mon 4/19/21	Sun 7/4/21	149SS
151		2.2.9 PEKERJAAN STRUKTUR LANTAI 9 63 days	Mon 4/26/21	Sun 7/11/21	
152		2.2.9.1 Beton bertulang kolom strukt 14 days	Mon 4/26/21	Sun 5/9/21	149SS+1 w
153		2.2.9.2 Beton bertulang kolom strukt 14 days	Mon 4/26/21	Sun 5/9/21	152FF
154		2.2.9.3 Beton bertulang kolom strukt 14 days	Mon 4/26/21	Sun 5/9/21	153FF
155		2.2.9.4 Beton bertulang balok Type B 14 days	Mon 4/26/21	Sun 5/9/21	154FF
156		2.2.9.5 Beton bertulang balok Type B 14 days	Mon 4/26/21	Sun 5/9/21	155FF
157		2.2.9.6 Beton bertulang balok Type B 14 days	Mon 4/26/21	Sun 5/9/21	156FF
158		2.2.9.7 Beton bertulang balok Type B 14 days	Mon 4/26/21	Sun 5/9/21	157FF
159		2.2.9.8 Beton bertulang balok Type B 14 days	Mon 4/26/21	Sun 5/9/21	158FF
160		2.2.9.9 Beton bertulang balok Type B 14 days	Mon 4/26/21	Sun 5/9/21	159FF
161		2.2.9.10 Beton bertulang plat lantai 9 14 days	Mon 4/26/21	Sun 5/9/21	160FF
162		2.2.9.11 Beton bertulang tangga dari 14 days	Mon 6/28/21	Sun 7/11/21	150FS-1 w
163		2.2.9.12 Beton bertulang plat leuvel 14 days	Mon 6/28/21	Sun 7/11/21	162FF
164		2.2.9.13 Beton bertulang lisplank / ja 14 days	Mon 4/26/21	Sun 5/9/21	161FF
165		2.2.9.14 Beton bertulang lift : (2 unit 28 days	Mon 4/26/21	Sun 7/11/21	164SS
166		2.2.10 PEKERJAAN STRUKTUR LANTAI 10 217 days	Mon 11/30/20	Sun 7/18/21	
167		2.2.10.1 Beton bertulang kolom strukt 21 days	Mon 5/3/21	Sun 6/6/21	164SS+1 w
168		2.2.10.2 Beton bertulang kolom strukt 14 days	Mon 4/19/21	Sun 5/2/21	146SS

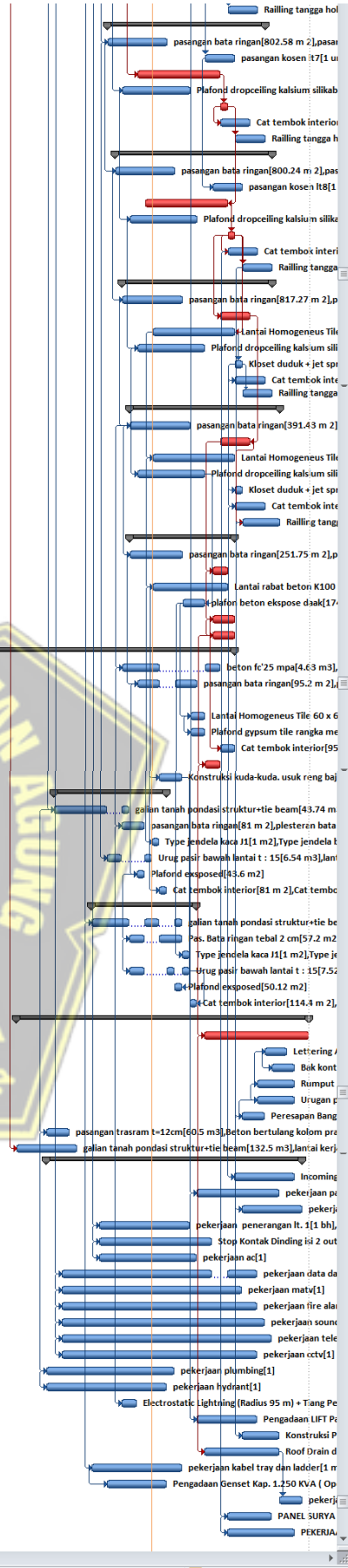


169		2.2.10.3 Beton bertulang kolom stru	14 days	Mon 4/19/21	Sun 5/2/21	168FF
170		2.2.10.4 Beton bertulang balok Type	14 days	Mon 4/19/21	Sun 5/2/21	169FF
171		2.2.10.5 Beton bertulang balok Type	14 days	Mon 4/19/21	Sun 5/2/21	170FF
172		2.2.10.6 Beton bertulang balok Type	14 days	Mon 4/19/21	Sun 5/2/21	171FF
173		2.2.10.7 Beton bertulang balok Type	14 days	Mon 4/19/21	Sun 5/2/21	172FF
174		2.2.10.8 Beton bertulang balok Type	14 days	Mon 4/19/21	Sun 5/2/21	173FF
175		2.2.10.9 Beton bertulang balok Type	14 days	Mon 4/19/21	Sun 5/2/21	174FF
176		2.2.10.10 Beton bertulang plat lantai	14 days	Mon 4/19/21	Sun 5/2/21	175FF
177		2.2.10.11 Beton bertulang tangga dar	0 days	Mon 11/30/20	Mon 11/30/20	
178		2.2.10.12 Beton bertulang plat leuve	14 days	Mon 7/5/21	Sun 7/18/21	165FS-1 w
179		2.2.10.13 Beton bertulang lisplank / j	21 days	Mon 5/3/21	Sun 6/6/21	167FF
180		2.2.10.14 Beton bertulang lift : (2 un	35 days	Mon 5/3/21	Sun 7/18/21	179SS
181						
182		2.2.11 PEKERJAAN STRUKTUR LANTAI D	21 days	Mon 5/24/21	Sun 6/13/21	
183		2.2.11.1 Beton bertulang kolom stru	14 days	Mon 5/24/21	Sun 6/6/21	179FF
184		2.2.11.2 Beton bertulang kolom stru	14 days	Mon 5/24/21	Sun 6/6/21	182SS
185		2.2.11.3 Beton bertulang balok Type	14 days	Mon 5/24/21	Sun 6/6/21	183SS
186		2.2.11.4 Beton bertulang balok Type	14 days	Mon 5/24/21	Sun 6/6/21	184SS
187		2.2.11.5 Beton bertulang balok Type	14 days	Mon 5/24/21	Sun 6/6/21	185SS
188		2.2.11.6 Beton bertulang balok Type	14 days	Mon 5/24/21	Sun 6/6/21	186SS
189		2.2.11.7 Beton bertulang balok Type	14 days	Mon 5/24/21	Sun 6/6/21	187SS
190		2.2.11.8 Beton bertulang balok Type	14 days	Mon 5/24/21	Sun 6/6/21	188SS
191		2.2.11.9 Beton bertulang balok Type	14 days	Mon 5/24/21	Sun 6/6/21	189SS
192		2.2.11.10 Beton bertulang balok Type	14 days	Mon 5/24/21	Sun 6/6/21	190SS
193		2.2.11.11 Beton bertulang plat daak	14 days	Mon 5/24/21	Sun 6/6/21	191SS
194		2.2.11.12 Beton bertulang balok daa	14 days	Mon 5/24/21	Sun 6/6/21	192SS
195		2.2.11.13 Beton bertulang balok daa	14 days	Mon 5/24/21	Sun 6/6/21	193SS
196		2.2.11.14 Beton bertulang balok daa	14 days	Mon 5/24/21	Sun 6/6/21	194SS
197		2.2.11.15 Beton bertulang plat daak	14 days	Mon 5/24/21	Sun 6/6/21	195SS
198		2.2.11.16 Beton bertulang balok daa	14 days	Mon 5/24/21	Sun 6/6/21	196SS
199		2.2.11.17 Beton bertulang balok daa	14 days	Mon 5/24/21	Sun 6/6/21	197SS
200		2.2.11.18 Beton bertulang balok daa	14 days	Mon 5/24/21	Sun 6/6/21	198SS
201		2.2.11.19 Beton bertulang balok daa	14 days	Mon 5/24/21	Sun 6/6/21	199SS
202		2.2.11.20 Beton bertulang balok daa	14 days	Mon 5/24/21	Sun 6/6/21	200SS
203		2.2.11.21 Beton bertulang balok daa	14 days	Mon 5/24/21	Sun 6/6/21	201SS
204		2.2.11.22 Beton bertulang balok daa	14 days	Mon 5/24/21	Sun 6/6/21	202SS
205		2.2.11.23 Beton bertulang plat daak	14 days	Mon 5/24/21	Sun 6/6/21	203SS
206		2.2.11.24 Beton bertulang balok daa	14 days	Mon 5/24/21	Sun 6/6/21	204SS
207		2.2.11.25 Beton bertulang balok daa	14 days	Mon 5/24/21	Sun 6/6/21	205SS
208		2.2.11.26 Beton bertulang plat daak	14 days	Mon 5/24/21	Sun 6/6/21	206SS
209		2.2.11.27 Beton bertulang konsol	14 days	Mon 5/24/21	Sun 6/6/21	207SS
210		2.2.11.28 Waterproofing Neothane S	7 days	Mon 6/7/21	Sun 6/13/21	208
211		2.2.12 PEKERJAAN RANGKA ATAP & AT	35 days	Mon 5/31/21	Sun 7/4/21	
212		2.2.12.1 Kuda2 dan kolom baja IWF, p	28 days	Mon 5/31/21	Sun 6/27/21	208SS+1 w
213		2.2.12.2 Gording kanal 2C 150.65.20.2	21 days	Mon 6/7/21	Sun 6/27/21	211FF
214		2.2.12.3 Penutup Atap :	21 days	Mon 6/14/21	Sun 7/4/21	212SS+1 w
215		2.2.12.4 Lapis aluminium foil bh	21 days	Mon 6/14/21	Sun 7/4/21	213FF
216		2.2.12.5 Lisplank GRC+rangka	7 days	Mon 6/28/21	Sun 7/4/21	214FF
217		2.2.12.6 Cat listplank	7 days	Mon 6/28/21	Sun 7/4/21	215FF
218		3 PEKERJAAN FINISHING ARSITEKTUR	196 days	Mon 4/19/21	Sun 11/14/21	
219		3.1 PEKERJAAN FINISHING ARSITEKTUR LA	140 days	Mon 4/19/21	Sun 9/19/21	
220		3.1.1 PEK. PAS. BT. BATA / PLESTERAN	42 days	Mon 4/19/21	Sun 6/13/21	150SS
221		3.1.2 PEK. PAS. KOSEN & PARTISI	49 days	Mon 6/28/21	Sun 8/15/21	212
222		3.1.3 PEK. PASANG LANTAI DAN DINDIN	91 days	Mon 5/3/21	Sun 8/15/21	220FF
223		3.1.4 PEK. PLAFOND	56 days	Mon 4/26/21	Sun 7/4/21	219SS+1 w
224		3.1.5 PEK.SANITAIR	7 days	Mon 8/9/21	Sun 8/15/21	221FF
225		3.1.6 PEK. CAT-CATAN	28 days	Mon 8/9/21	Sun 9/5/21	223SS
226		3.1.7 PEK. LAIN-LAIN	28 days	Mon 8/23/21	Sun 9/19/21	223FS+1 w
227		3.2 PEKERJAAN FINISHING ARSITEKTUR LA	140 days	Mon 4/26/21	Sun 9/26/21	
228		3.2.1 PEK. PAS. BT. BATA / PLESTERAN	42 days	Mon 4/26/21	Sun 6/20/21	222SS
229		3.2.2 PEK. PAS. KOSEN & PARTISI	42 days	Mon 8/2/21	Sun 9/12/21	224SS-1 w
230		3.2.3 PEK. PASANG LANTAI DAN DINDIN	84 days	Mon 5/24/21	Sun 8/15/21	208SS
231		3.2.4 PEK. PLAFOND	77 days	Mon 5/3/21	Sun 8/1/21	221SS
232		3.2.5 PEK.SANITAIR	7 days	Mon 8/16/21	Sun 8/22/21	229
233		3.2.6 PEK. CAT-CATAN	28 days	Mon 8/16/21	Sun 9/12/21	231SS
234		3.2.7 PEK. LAIN-LAIN	28 days	Mon 8/30/21	Sun 9/26/21	232SS+2 w
235		3.3 PEKERJAAN FINISHING ARSITEKTUR LA	161 days	Mon 4/26/21	Sun 10/17/21	
236		3.3.1 PEK. PAS. BT. BATA / PLESTERAN	49 days	Mon 4/26/21	Sun 6/27/21	227SS
237		3.3.2 PEK. PAS. KOSEN & PARTISI	70 days	Mon 8/9/21	Sun 10/17/21	230FS+1 w
238		3.3.3 PEK. PASANG LANTAI DAN DINDIN	77 days	Mon 6/7/21	Sun 8/22/21	231FF
239		3.3.4 PEK. PLAFOND	77 days	Mon 5/24/21	Sun 8/8/21	229SS
240		3.3.5 PEK.SANITAIR	7 days	Mon 8/23/21	Sun 8/29/21	237
241		3.3.6 PEK. CAT-CATAN	28 days	Mon 8/23/21	Sun 9/19/21	239SS
242		3.3.7 PEK. LAIN-LAIN	28 days	Mon 9/6/21	Sun 10/3/21	239FS+1 w
243		3.4 PEKERJAAN FINISHING ARSITEKTUR LA	147 days	Mon 5/3/21	Sun 10/10/21	
244		3.4.1 PEK. PAS. BT. BATA / PLESTERAN	49 days	Mon 5/3/21	Sun 7/4/21	230SS
245		3.4.2 PEK. PAS. KOSEN & PARTISI	56 days	Mon 8/16/21	Sun 10/10/21	239SS-1 w
246		3.4.3 PEK. PASANG LANTAI DAN DINDIN	77 days	Mon 6/14/21	Sun 8/29/21	237SS+1 w
247		3.4.4 PEK. PLAFOND	77 days	Mon 5/31/21	Sun 8/15/21	238SS+1 w
248		3.4.5 PEK.SANITAIR	7 days	Mon 8/30/21	Sun 9/5/21	245
249		3.4.6 PEK. CAT-CATAN	28 days	Mon 8/30/21	Sun 9/26/21	247SS
250		3.4.7 PEK. LAIN-LAIN	28 days	Mon 9/13/21	Sun 10/10/21	247FS+1 w
251		3.5 PEKERJAAN FINISHING ARSITEKTUR LA	147 days	Mon 5/24/21	Sun 10/17/21	
252		3.5.1 PEK. PAS. BT. BATA / PLESTERAN	49 days	Mon 5/24/21	Sun 7/11/21	238SS
253		3.5.2 PEK. PAS. KOSEN & PARTISI	63 days	Mon 8/16/21	Sun 10/17/21	246
254		3.5.3 PEK. PASANG LANTAI DAN DINDIN	77 days	Mon 6/21/21	Sun 9/5/21	245SS+1 w
255		3.5.4 PEK. PLAFOND	77 days	Mon 6/7/21	Sun 8/22/21	245SS-1 w
256		3.5.5 PEK.SANITAIR	7 days	Mon 9/6/21	Sun 9/12/21	253
257		3.5.6 PEK. CAT-CATAN	28 days	Mon 9/6/21	Sun 10/3/21	255SS
258		3.5.7 PEK. LAIN-LAIN	28 days	Mon 9/20/21	Sun 10/17/21	255FS+1 w
259		3.6 PEKERJAAN FINISHING ARSITEKTUR LA	147 days	Mon 5/31/21	Sun 10/24/21	
260		3.6.1 PEK. PAS. BT. BATA / PLESTERAN	49 days	Mon 5/31/21	Sun 7/18/21	246SS
261		3.6.2 PEK. PAS. KOSEN & PARTISI	56 days	Mon 8/30/21	Sun 10/24/21	254FS+1 w
262		3.6.3 PEK. PASANG LANTAI DAN DINDIN	77 days	Mon 6/28/21	Sun 9/12/21	255FF
263		3.6.4 PEK. PLAFOND	77 days	Mon 6/14/21	Sun 8/29/21	254SS+1 w
264		3.6.5 PEK.SANITAIR	7 days	Mon 9/13/21	Sun 9/19/21	261
265		3.6.6 PEK. CAT-CATAN	28 days	Mon 9/13/21	Sun 10/10/21	263SS

11/30

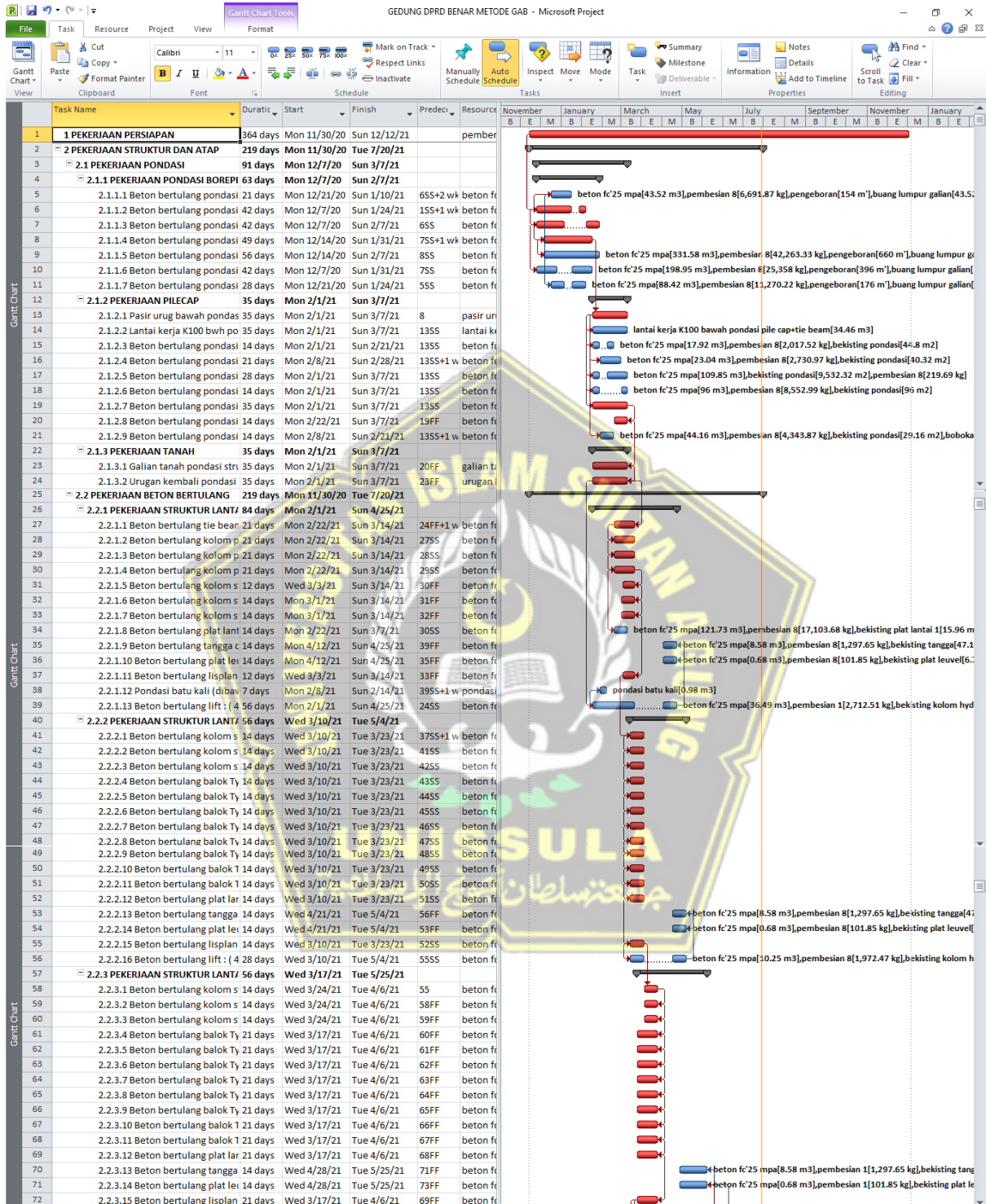


265	3.6.7 PEK. LAIN-LAIN	28 days	Mon 9/27/21	Sun 10/24/21	263FS+1 w
266	3.7 PEKERJAAN FINISHING ARSITEKTUR LA	147 days	Mon 6/7/21	Sun 10/31/21	
267	3.7.1 PEK. PAS. BT. BATA / PLESTERAN	56 days	Mon 6/7/21	Sun 8/1/21	262SS-1 w
268	3.7.2 PEK. PAS. KOSEN & PARTISI	28 days	Mon 9/6/21	Sun 10/3/21	262FS+1 w
269	3.7.3 PEK. PASANG LANTAI DAN DINDING	77 days	Mon 7/5/21	Sun 9/19/21	261SS+1 w
270	3.7.4 PEK. PLAFOND	63 days	Mon 6/21/21	Sun 8/22/21	262SS+1 w
271	3.7.5 PEK. SANITAIR	7 days	Mon 9/20/21	Sun 9/26/21	269
272	3.7.6 PEK. CAT-CATAN	28 days	Mon 9/20/21	Sun 10/17/21	271SS
273	3.7.7 PEK. LAIN-LAIN	28 days	Mon 10/4/21	Sun 10/31/21	271FS+1 wk
274	3.8 PEKERJAAN FINISHING ARSITEKTUR LANTAI 8	147 days	Mon 6/14/21	Sun 11/7/21	
275	3.8.1 PEK. PAS. BT. BATA / PLESTERAN	56 days	Mon 6/14/21	Sun 8/8/21	267SS+1 wk
276	3.8.2 PEK. PAS. KOSEN & PARTISI	28 days	Mon 9/13/21	Sun 10/10/21	268SS+1 wk
277	3.8.3 PEK. PASANG LANTAI DAN DINDING	77 days	Mon 7/12/21	Sun 9/26/21	271FF
278	3.8.4 PEK. PLAFOND	63 days	Mon 6/28/21	Sun 8/29/21	270SS+1 wk
279	3.8.5 PEK. SANITAIR	7 days	Mon 9/27/21	Sun 10/3/21	277
280	3.8.6 PEK. CAT-CATAN	28 days	Mon 9/27/21	Sun 10/24/21	279SS
281	3.8.7 PEK. LAIN-LAIN	28 days	Mon 10/11/21	Sun 11/7/21	279FS+1 wk
282	3.9 PEKERJAAN FINISHING ARSITEKTUR LANTAI 9	140 days	Mon 6/21/21	Sun 11/7/21	
283	3.9.1 PEK. PAS. BT. BATA / PLESTERAN	56 days	Mon 6/21/21	Sun 8/15/21	275SS+1 wk
284	3.9.2 PEK. PAS. KOSEN & PARTISI	28 days	Mon 9/20/21	Sun 10/17/21	279SS-1 wk
285	3.9.3 PEK. PASANG LANTAI DAN DINDING	77 days	Mon 7/19/21	Sun 10/3/21	279FF
286	3.9.4 PEK. PLAFOND	63 days	Mon 7/5/21	Sun 9/5/21	278SS+1 wk
287	3.9.5 PEK. SANITAIR	7 days	Mon 10/4/21	Sun 10/10/21	285
288	3.9.6 PEK. CAT-CATAN	28 days	Mon 10/4/21	Sun 10/31/21	287SS
289	3.9.7 PEK. LAIN-LAIN	28 days	Mon 10/11/21	Sun 11/7/21	287
290	3.10 PEKERJAAN FINISHING ARSITEKTUR LANTAI 10	140 days	Mon 6/28/21	Sun 11/14/21	
291	3.10.1 PEK. PAS. BT. BATA / PLESTERAN	56 days	Mon 6/28/21	Sun 8/22/21	283SS+1 wk
292	3.10.2 PEK. PAS. KOSEN & PARTISI	28 days	Mon 9/20/21	Sun 10/17/21	284FF
293	3.10.3 PEK. PASANG LANTAI DAN DINDING	77 days	Mon 7/19/21	Sun 10/3/21	285SS
294	3.10.4 PEK. PLAFOND	63 days	Mon 7/5/21	Sun 9/5/21	286SS
295	3.10.5 PEK. SANITAIR	7 days	Mon 10/4/21	Sun 10/10/21	287SS
296	3.10.6 PEK. CAT-CATAN	28 days	Mon 10/4/21	Sun 10/31/21	288SS
297	3.10.7 PEK. LAIN-LAIN	35 days	Mon 10/11/21	Sun 11/14/21	292FS-1 wk
298	3.11 PEKERJAAN FINISHING ARSITEKTUR LANTAI DAK	98 days	Mon 6/28/21	Sun 10/3/21	
299	3.11.1 PEK. PAS. BT. BATA / PLESTERAN	49 days	Mon 6/28/21	Sun 8/15/21	291SS
300	3.11.2 PEK. PAS. KOSEN & PARTISI	14 days	Mon 9/13/21	Sun 9/26/21	292SS-1 wk
301	3.11.3 PEK. PASANG LANTAI DAN DINDING	70 days	Mon 7/19/21	Sun 9/26/21	293SS
302	3.11.4 PEK. PLAFOND	21 days	Mon 8/16/21	Sun 9/5/21	294FF
303	3.11.5 PEK. CAT-CATAN	21 days	Mon 9/13/21	Sun 10/3/21	300SS
304	3.11.6 PEK. LAIN-LAIN	21 days	Mon 9/13/21	Sun 10/3/21	303SS
305	4 PEKERJAAN SELASAR PENGHUBUNG	294 days	Mon 11/30/20	Sun 10/9/21	
306	4.1 PEK. BETON BERTULANG	49 days	Mon 6/21/21	Sun 9/19/21	291SS-1 wk
307	4.2 PEK. PAS. BATU BATA	42 days	Mon 7/5/21	Sun 8/29/21	299SS+1 wk
308	4.3 PEK. KUSEN	0 days	Mon 11/30/20	Mon 11/30/20	
309	4.4 PEK. LANTAI	14 days	Mon 8/23/21	Sun 9/5/21	302SS+1 wk
310	4.5 PEK. PLAFOND	14 days	Mon 8/23/21	Sun 9/5/21	309SS
311	4.6 PEK. CAT - CATAN	14 days	Mon 9/20/21	Sun 10/3/21	303SS+1 wk
312	4.7 PEK. LAIN - LAIN	14 days	Mon 9/6/21	Sun 9/19/21	304SS-1 wk
313	4.8 PEK. ATAP	21 days	Mon 7/26/21	Sun 8/15/21	301SS+1 wk
314	5 PEKERJAAN RUANG POMPA	91 days	Mon 4/19/21	Sun 8/1/21	
315	5.1 PEK. BETON BERTULANG	42 days	Mon 4/19/21	Sun 6/27/21	219SS
316	5.2 PEK. PAS. BATU BATA	21 days	Mon 6/21/21	Sun 7/11/21	306SS
317	5.3 PEK. KUSEN	7 days	Mon 7/19/21	Sun 7/25/21	301SS
318	5.4 PEK. LANTAI DAN DINDING	21 days	Mon 6/7/21	Sun 7/18/21	267SS
319	5.5 PEK. PLAFOND	7 days	Mon 7/5/21	Sun 7/11/21	307SS
320	5.6 PEK. CAT - CATAN	7 days	Mon 7/26/21	Sun 8/1/21	301SS+1 wk
321	6 PEKERJAAN RUANG GENSET	98 days	Mon 5/24/21	Sun 8/29/21	
322	6.1 PEK. BETON BERTULANG	56 days	Mon 5/24/21	Sun 8/15/21	251SS
323	6.2 PEK. PAS. BATU BATA	35 days	Mon 6/28/21	Sun 8/15/21	319SS-1 wk
324	6.3 PEK. KUSEN	7 days	Mon 6/16/21	Sun 6/22/21	302SS
325	6.4 PEK. LANTAI DAN DINDING	28 days	Mon 6/28/21	Sun 8/22/21	323SS
326	6.5 PEK. PLAFOND	7 days	Mon 8/9/21	Sun 8/15/21	313FF
327	6.6 PEK. CAT - CATAN	7 days	Mon 8/23/21	Sun 8/29/21	325FF+1 wk
328	7 PEKERJAAN LAIN-LAIN	259 days	Mon 3/15/21	Sun 12/12/21	
329	7.1 PEK. FASADE TAMPAK DEPAN	98 days	Mon 9/6/21	Sun 12/12/21	312SS
330	7.2 PEK. LETTERING DAN PAPAN NAMA	21 days	Mon 11/1/21	Sun 11/21/21	332SS+1 wk
331	7.3 PEK. SALURAN AIR KELILING BANGUNAN	21 days	Mon 11/8/21	Sun 11/25/21	330SS+1 wk
332	7.4 PEK. LANDSCAPE	35 days	Mon 10/25/21	Sun 11/28/21	333SS
333	7.5 PEK. BAK TANAMAN	35 days	Mon 10/25/21	Sun 11/28/21	334SS+2 wks
334	7.6 PEK. SUMUR RESAPAN	21 days	Mon 10/11/21	Sun 10/31/21	297SS
335	7.7 PEK. SIPILIPAL	21 days	Mon 4/12/21	Sun 5/2/21	315SS-1 wk
336	7.8 HYDRANT Kap. 90 m3 & AIR BERSIH Kap. 45 m3 : (GR)	56 days	Mon 3/15/21	Sun 5/9/21	72SS
337	8 PEKERJAAN MEKANIKAL/ ELEKTRIKAL	224 days	Mon 4/12/21	Sun 12/5/21	
338	8.1 PEKERJAAN SAMBUNGAN DAYA	56 days	Mon 10/4/21	Sun 11/28/21	296SS
339	8.2 PEKERJAAN PANEL	77 days	Mon 8/30/21	Sun 11/14/21	260SS
340	8.3 PEKERJAAN KABEL	56 days	Mon 10/11/21	Sun 12/5/21	334SS
341	8.4 PEKERJAAN PENERANGAN	84 days	Mon 5/31/21	Sun 8/22/21	259SS
342	8.5 PEKERJAAN STOP KONTAK	105 days	Mon 5/31/21	Sun 9/12/21	341SS
343	8.6 PEKERJAAN AC	91 days	Mon 5/31/21	Sun 8/29/21	342SS
344	8.7 PEKERJAAN DATA DAN WIFI	154 days	Mon 4/26/21	Sun 10/24/21	235SS
345	8.8 PEKERJAAN MATV	154 days	Mon 4/26/21	Sun 10/10/21	344SS
346	8.9 PEKERJAAN FIRE ALARM	168 days	Mon 4/26/21	Sun 10/24/21	345SS
347	8.10 PEKERJAAN SOUND SYSTEM	175 days	Mon 4/26/21	Sun 10/31/21	346SS
348	8.11 PEKERJAAN TELEPON	182 days	Mon 4/26/21	Sun 11/7/21	347SS
349	8.12 PEKERJAAN CCTV	168 days	Mon 4/26/21	Sun 10/24/21	348SS
350	8.13 PEKERJAAN PLUMBING	105 days	Mon 4/12/21	Sun 8/8/21	335SS
351	8.14 PEKERJAAN HYDRANT DAN SPRINKLER	98 days	Mon 4/12/21	Sun 8/1/21	350SS
352	8.15 PEKERJAAN PENANGKAL PETIR	14 days	Mon 6/21/21	Sun 7/4/21	316SS
353	8.16 PEKERJAAN LIFT	56 days	Mon 8/30/21	Sun 10/24/21	339SS
354	8.17 PEKERJAAN GONDOLA	35 days	Mon 10/11/21	Sun 11/14/21	281SS
355	8.18 PEKERJAAN TALANG AIR HUJAN	70 days	Mon 9/6/21	Sun 11/14/21	329SS
356	8.19 PEKERJAAN KABEL TRAY DAN KABEL LADDER	84 days	Mon 5/24/21	Sun 8/15/21	322SS
357	8.20 PEKERJAAN GENSET	56 days	Mon 6/7/21	Sun 8/1/21	356SS+2 wks
358	8.21 PEKERJAAN DEEP WELL	21 days	Mon 11/15/21	Sun 12/5/21	355
359	8.22 PEKERJAAN PANEL SURYA	42 days	Mon 9/27/21	Sun 11/7/21	280SS
360	8.23 PEKERJAAN PRESSURIZED FAN	63 days	Mon 9/27/21	Sun 11/28/21	359SS

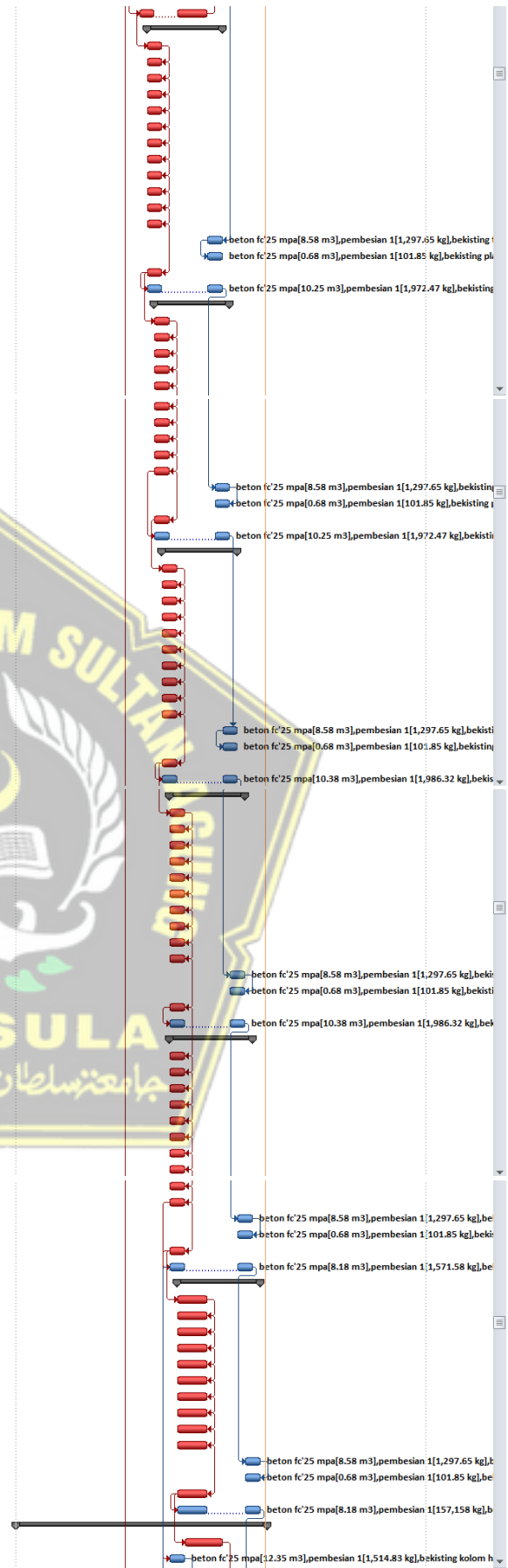


LAMPIRAN 4

BARChart MS. PROJECT GABUNGAN METODE CRASHING DAN OVERLAPPING

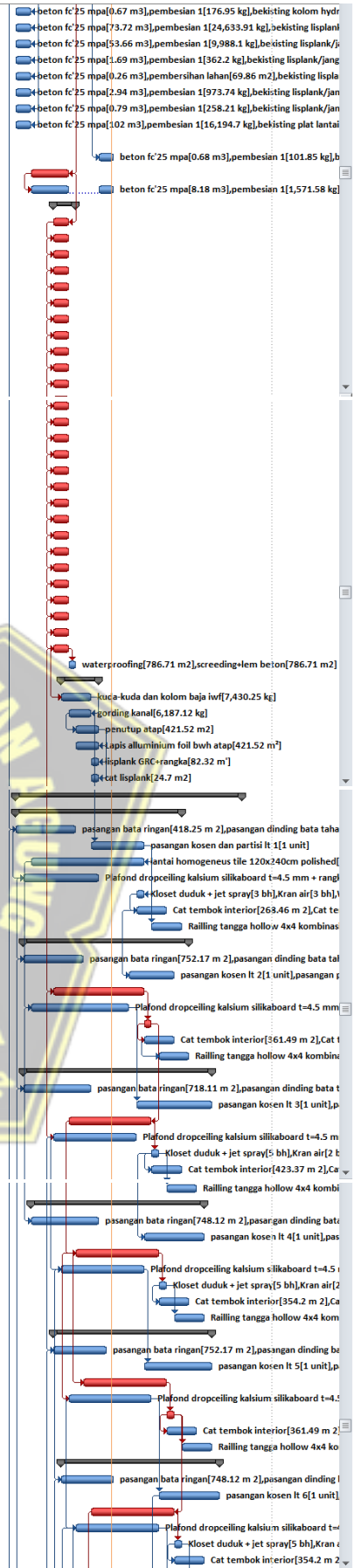


73	2.2.3.16 Beton bertulang lift : (4 28 days	Wed 3/24/21	Tue 5/25/21	725S+1 w	beton f'
74	2.2.4 PEKERJAAN STRUKTUR LANTAI 56 days	Wed 3/31/21	Tue 6/8/21		
75	2.2.4.1 Beton bertulang kolom s 14 days	Wed 3/31/21	Tue 4/13/21	735S+1 w	beton f'
76	2.2.4.2 Beton bertulang kolom s 14 days	Wed 3/31/21	Tue 4/13/21	75FF	beton f'
77	2.2.4.3 Beton bertulang kolom s 14 days	Wed 3/31/21	Tue 4/13/21	76FF	beton f'
78	2.2.4.4 Beton bertulang balok Ty 14 days	Wed 3/31/21	Tue 4/13/21	77FF	beton f'
79	2.2.4.5 Beton bertulang balok Ty 14 days	Wed 3/31/21	Tue 4/13/21	78FF	beton f'
80	2.2.4.6 Beton bertulang balok Ty 14 days	Wed 3/31/21	Tue 4/13/21	79FF	beton f'
81	2.2.4.7 Beton bertulang balok Ty 14 days	Wed 3/31/21	Tue 4/13/21	80FF	beton f'
82	2.2.4.8 Beton bertulang balok Ty 14 days	Wed 3/31/21	Tue 4/13/21	81FF	beton f'
83	2.2.4.9 Beton bertulang balok Ty 14 days	Wed 3/31/21	Tue 4/13/21	82FF	beton f'
84	2.2.4.10 Beton bertulang balok T 14 days	Wed 3/31/21	Tue 4/13/21	83FF	beton f'
85	2.2.4.11 Beton bertulang balok T 14 days	Wed 3/31/21	Tue 4/13/21	84FF	beton f'
86	2.2.4.12 Beton bertulang plat lar 14 days	Wed 3/31/21	Tue 4/13/21	85FF	beton f'
87	2.2.4.13 Beton bertulang tangga 14 days	Wed 5/26/21	Tue 6/8/21	71FF+2 w	beton f'
88	2.2.4.14 Beton bertulang plat lei 14 days	Wed 5/26/21	Tue 6/8/21	875S	beton f'
89	2.2.4.15 Beton bertulang lisplan 14 days	Wed 3/31/21	Tue 4/13/21	86FF	beton f'
90	2.2.4.16 Beton bertulang lift : (4 28 days	Wed 3/31/21	Tue 6/8/21	895S	beton f'
91	2.2.5 PEKERJAAN STRUKTUR LANTAI 56 days	Wed 4/7/21	Tue 6/15/21		
92	2.2.5.1 Beton bertulang kolom s 14 days	Wed 4/7/21	Tue 4/20/21	895S+1 w	beton f'
93	2.2.5.2 Beton bertulang kolom s 14 days	Wed 4/7/21	Tue 4/20/21	92FF	beton f'
94	2.2.5.3 Beton bertulang kolom s 14 days	Wed 4/7/21	Tue 4/20/21	93FF	beton f'
95	2.2.5.4 Beton bertulang balok Ty 14 days	Wed 4/7/21	Tue 4/20/21	94FF	beton f'
96	2.2.5.5 Beton bertulang balok Ty 14 days	Wed 4/7/21	Tue 4/20/21	95FF	beton f'
97	2.2.5.6 Beton bertulang balok Ty 14 days	Wed 4/7/21	Tue 4/20/21	96FF	beton f'
98	2.2.5.7 Beton bertulang balok Ty 14 days	Wed 4/7/21	Tue 4/20/21	97FF	beton f'
99	2.2.5.8 Beton bertulang balok Ty 14 days	Wed 4/7/21	Tue 4/20/21	98FF	beton f'
100	2.2.5.9 Beton bertulang balok Ty 14 days	Wed 4/7/21	Tue 4/20/21	99FF	beton f'
101	2.2.5.10 Beton bertulang plat lar 14 days	Wed 4/7/21	Tue 4/20/21	100FF	beton f'
102	2.2.5.11 Beton bertulang tangga 14 days	Wed 6/2/21	Tue 6/15/21	90FS-1 w	beton f'
103	2.2.5.12 Beton bertulang plat lei 14 days	Wed 6/2/21	Tue 6/15/21	102FF	beton f'
104	2.2.5.13 Beton bertulang lisplan 14 days	Wed 4/7/21	Tue 4/20/21	101FF	beton f'
105	2.2.5.14 Beton bertulang lift : (4 28 days	Wed 4/7/21	Tue 6/15/21	101SS	beton f'
106	2.2.6 PEKERJAAN STRUKTUR LANTAI 56 days	Wed 4/14/21	Tue 6/22/21		
107	2.2.6.1 Beton bertulang kolom s 14 days	Wed 4/14/21	Tue 4/27/21	104SS+1	beton f'
108	2.2.6.2 Beton bertulang kolom s 14 days	Wed 4/14/21	Tue 4/27/21	107FF	beton f'
109	2.2.6.3 Beton bertulang kolom s 14 days	Wed 4/14/21	Tue 4/27/21	108FF	beton f'
110	2.2.6.4 Beton bertulang balok Ty 14 days	Wed 4/14/21	Tue 4/27/21	109FF	beton f'
111	2.2.6.5 Beton bertulang balok Ty 14 days	Wed 4/14/21	Tue 4/27/21	110FF	beton f'
112	2.2.6.6 Beton bertulang balok Ty 14 days	Wed 4/14/21	Tue 4/27/21	111FF	beton f'
113	2.2.6.7 Beton bertulang balok Ty 14 days	Wed 4/14/21	Tue 4/27/21	112FF	beton f'
114	2.2.6.8 Beton bertulang balok Ty 14 days	Wed 4/14/21	Tue 4/27/21	113FF	beton f'
115	2.2.6.9 Beton bertulang balok Ty 14 days	Wed 4/14/21	Tue 4/27/21	114FF	beton f'
116	2.2.6.10 Beton bertulang plat lar 14 days	Wed 4/14/21	Tue 4/27/21	115FF	beton f'
117	2.2.6.11 Beton bertulang tangga 14 days	Wed 6/9/21	Tue 6/22/21	105FS-1	beton f'
118	2.2.6.12 Beton bertulang plat lei 14 days	Wed 6/9/21	Tue 6/22/21	117SS	beton f'
119	2.2.6.13 Beton bertulang lisplan 14 days	Wed 4/14/21	Tue 4/27/21	116FF	beton f'
120	2.2.6.14 Beton bertulang lift : (4 28 days	Wed 4/14/21	Tue 6/22/21	119SS	beton f'
121	2.2.7 PEKERJAAN STRUKTUR LANTAI 56 days	Wed 4/21/21	Tue 6/29/21		
122	2.2.7.1 Beton bertulang kolom s 14 days	Wed 4/21/21	Tue 5/4/21	119SS+1	beton f'
123	2.2.7.2 Beton bertulang kolom s 14 days	Wed 4/21/21	Tue 5/4/21	122FF	beton f'
124	2.2.7.3 Beton bertulang kolom s 14 days	Wed 4/21/21	Tue 5/4/21	123FF	beton f'
125	2.2.7.4 Beton bertulang balok Ty 14 days	Wed 4/21/21	Tue 5/4/21	124FF	beton f'
126	2.2.7.5 Beton bertulang balok Ty 14 days	Wed 4/21/21	Tue 5/4/21	125FF	beton f'
127	2.2.7.6 Beton bertulang balok Ty 14 days	Wed 4/21/21	Tue 5/4/21	126FF	beton f'
128	2.2.7.7 Beton bertulang balok Ty 14 days	Wed 4/21/21	Tue 5/4/21	127FF	beton f'
129	2.2.7.8 Beton bertulang balok Ty 14 days	Wed 4/21/21	Tue 5/4/21	128FF	beton f'
130	2.2.7.9 Beton bertulang balok Ty 14 days	Wed 4/21/21	Tue 5/4/21	129FF	beton f'
131	2.2.7.10 Beton bertulang plat lar 14 days	Wed 4/21/21	Tue 5/4/21	130FF	beton f'
132	2.2.7.11 Beton bertulang tangga 14 days	Wed 6/16/21	Tue 6/29/21	120FS-1	beton f'
133	2.2.7.12 Beton bertulang plat lei 14 days	Wed 6/16/21	Tue 6/29/21	132FF	beton f'
134	2.2.7.13 Beton bertulang lisplan 14 days	Wed 4/21/21	Tue 5/4/21	131FF	beton f'
135	2.2.7.14 Beton bertulang lift : (2 28 days	Wed 4/21/21	Tue 6/29/21	134SS	beton f'
136	2.2.8 PEKERJAAN STRUKTUR LANTAI 63 days	Wed 4/21/21	Tue 7/6/21		
137	2.2.8.1 Beton bertulang kolom s 14 days	Wed 4/21/21	Tue 5/4/21	134FF	beton f'
138	2.2.8.2 Beton bertulang kolom s 14 days	Wed 4/21/21	Tue 5/4/21	137FF	beton f'
139	2.2.8.3 Beton bertulang kolom s 14 days	Wed 4/21/21	Tue 5/4/21	138FF	beton f'
140	2.2.8.4 Beton bertulang balok Ty 14 days	Wed 4/21/21	Tue 5/4/21	139FF	beton f'
141	2.2.8.5 Beton bertulang balok Ty 14 days	Wed 4/21/21	Tue 5/4/21	140FF	beton f'
142	2.2.8.6 Beton bertulang balok Ty 14 days	Wed 4/21/21	Tue 5/4/21	141FF	beton f'
143	2.2.8.7 Beton bertulang balok Ty 14 days	Wed 4/21/21	Tue 5/4/21	142FF	beton f'
144	2.2.8.8 Beton bertulang balok Ty 14 days	Wed 4/21/21	Tue 5/4/21	143FF	beton f'
145	2.2.8.9 Beton bertulang balok Ty 14 days	Wed 4/21/21	Tue 5/4/21	144FF	beton f'
146	2.2.8.10 Beton bertulang plat lar 14 days	Wed 4/21/21	Tue 5/4/21	145FF	beton f'
147	2.2.8.11 Beton bertulang tangga 14 days	Wed 6/23/21	Tue 7/6/21	135FS-1	beton f'
148	2.2.8.12 Beton bertulang plat lei 14 days	Wed 6/23/21	Tue 7/6/21	147FF	beton f'
149	2.2.8.13 Beton bertulang lisplan 14 days	Wed 4/21/21	Tue 5/4/21	146FF	beton f'
150	2.2.8.14 Beton bertulang lift : (2 28 days	Wed 4/21/21	Tue 7/6/21	149SS	beton f'
151	2.2.9 PEKERJAAN STRUKTUR LANTAI 63 days	Wed 4/28/21	Tue 7/13/21		
152	2.2.9.1 Beton bertulang kolom struktur ty 14 days	Wed 4/28/21	Tue 5/25/21	149SS+1 wk	beton f'c'21
153	2.2.9.2 Beton bertulang kolom struktur ty 14 days	Wed 4/28/21	Tue 5/25/21	152FF	beton f'c'21
154	2.2.9.3 Beton bertulang kolom struktur ty 14 days	Wed 4/28/21	Tue 5/25/21	153FF	beton f'c'21
155	2.2.9.4 Beton bertulang balok Type B1 14 days	Wed 4/28/21	Tue 5/25/21	154FF	beton f'c'21
156	2.2.9.5 Beton bertulang balok Type BA2 14 days	Wed 4/28/21	Tue 5/25/21	155FF	beton f'c'21
157	2.2.9.6 Beton bertulang balok Type BA3 14 days	Wed 4/28/21	Tue 5/25/21	156FF	beton f'c'21
158	2.2.9.7 Beton bertulang balok Type BA4 14 days	Wed 4/28/21	Tue 5/25/21	157FF	beton f'c'21
159	2.2.9.8 Beton bertulang balok Type B2 14 days	Wed 4/28/21	Tue 5/25/21	158FF	beton f'c'21
160	2.2.9.9 Beton bertulang balok Type BA5 14 days	Wed 4/28/21	Tue 5/25/21	159FF	beton f'c'21
161	2.2.9.10 Beton bertulang plat lantai 9 : t - 14 days	Wed 4/28/21	Tue 5/25/21	160FF	beton f'c'21
162	2.2.9.11 Beton bertulang tangga dari Lt: 9 - 14 days	Wed 6/30/21	Tue 7/13/21	150FS-1 wk	beton f'c'21
163	2.2.9.12 Beton bertulang plat level 14 days	Wed 6/30/21	Tue 7/13/21	162FF	beton f'c'21
164	2.2.9.13 Beton bertulang lisplan / janggu 14 days	Wed 4/28/21	Tue 5/25/21	161FF	beton f'c'21
165	2.2.9.14 Beton bertulang lift : (2 unit) 28 days	Wed 4/28/21	Tue 7/13/21	164SS	beton f'c'21
166	2.2.10 PEKERJAAN STRUKTUR LANTAI 10 219 days	Mon 11/30/20	Tue 7/20/21		
167	2.2.10.1 Beton bertulang kolom struktur t 21 days	Wed 5/5/21	Tue 6/8/21	164SS+1 wk	beton f'c'21
168	2.2.10.2 Beton bertulang kolom struktur t 14 days	Wed 4/21/21	Tue 5/4/21	146SS	beton f'c'21



169	2.2.10.3 Beton bertulang kolom struktur t	14 days	Wed 4/21/21	Tue 5/4/21	168FF	beton fc'21
170	2.2.10.4 Beton bertulang balok Type B1	14 days	Wed 4/21/21	Tue 5/4/21	169FF	beton fc'21
171	2.2.10.5 Beton bertulang balok Type BA2	14 days	Wed 4/21/21	Tue 5/4/21	170FF	beton fc'21
172	2.2.10.6 Beton bertulang balok Type BA3	14 days	Wed 4/21/21	Tue 5/4/21	171FF	beton fc'21
173	2.2.10.7 Beton bertulang balok Type BA4	14 days	Wed 4/21/21	Tue 5/4/21	172FF	beton fc'21
174	2.2.10.8 Beton bertulang balok Type B2	14 days	Wed 4/21/21	Tue 5/4/21	173FF	beton fc'21
175	2.2.10.9 Beton bertulang balok Type BA5	14 days	Wed 4/21/21	Tue 5/4/21	174FF	beton fc'21
176	2.2.10.10 Beton bertulang plat lantai 10 :	14 days	Wed 4/21/21	Tue 5/4/21	175FF	beton fc'21
177	2.2.10.11 Beton bertulang tangga dari Lt.:	0 days	Mon 11/30/20	Mon 11/30/20		beton fc'21
178	2.2.10.12 Beton bertulang plat level	14 days	Wed 7/7/21	Tue 7/20/21	165FS-1 wk	beton fc'21
179	2.2.10.13 Beton bertulang lisplank / jangg	21 days	Wed 5/5/21	Tue 6/8/21	167FF	beton fc'21
180	2.2.10.14 Beton bertulang lift : (2 unit)	35 days	Wed 5/5/21	Tue 7/20/21	179SS	beton fc'21
181	2.2.11 PEKERJAAN STRUKTUR LANTAI DAAK	21 days	Wed 5/26/21	Tue 6/15/21		
182	2.2.11.1 Beton bertulang kolom struktur t	14 days	Wed 5/26/21	Tue 6/8/21	179FF	beton fc'21
183	2.2.11.2 Beton bertulang kolom struktur t	14 days	Wed 5/26/21	Tue 6/8/21	182SS	beton fc'21
184	2.2.11.3 Beton bertulang balok Type BD1	14 days	Wed 5/26/21	Tue 6/8/21	183SS	beton fc'21
185	2.2.11.4 Beton bertulang balok Type BD1K	14 days	Wed 5/26/21	Tue 6/8/21	184SS	beton fc'21
186	2.2.11.5 Beton bertulang balok Type BD2H	14 days	Wed 5/26/21	Tue 6/8/21	185SS	beton fc'21
187	2.2.11.6 Beton bertulang balok Type BD41	14 days	Wed 5/26/21	Tue 6/8/21	186SS	beton fc'21
188	2.2.11.7 Beton bertulang balok Type BD41	14 days	Wed 5/26/21	Tue 6/8/21	187SS	beton fc'21
189	2.2.11.8 Beton bertulang balok Type BD42	14 days	Wed 5/26/21	Tue 6/8/21	188SS	beton fc'21
190	2.2.11.9 Beton bertulang balok Type BD42	14 days	Wed 5/26/21	Tue 6/8/21	189SS	beton fc'21
191	2.2.11.10 Beton bertulang balok Type BA5	14 days	Wed 5/26/21	Tue 6/8/21	190SS	beton fc'21
192	2.2.11.11 Beton bertulang plat daak atap	14 days	Wed 5/26/21	Tue 6/8/21	191SS	beton fc'21
193	2.2.11.12 Beton bertulang balok daak tan	14 days	Wed 5/26/21	Tue 6/8/21	192SS	beton fc'21
194	2.2.11.13 Beton bertulang balok daak tan	14 days	Wed 5/26/21	Tue 6/8/21	193SS	beton fc'21
195	2.2.11.14 Beton bertulang balok daak tan	14 days	Wed 5/26/21	Tue 6/8/21	194SS	beton fc'21
196	2.2.11.15 Beton bertulang plat daak tang	14 days	Wed 5/26/21	Tue 6/8/21	195SS	beton fc'21
197	2.2.11.16 Beton bertulang balok daak tan	14 days	Wed 5/26/21	Tue 6/8/21	196SS	beton fc'21
198	2.2.11.17 Beton bertulang balok daak tan	14 days	Wed 5/26/21	Tue 6/8/21	197SS	beton fc'21
199	2.2.11.18 Beton bertulang balok daak tan	14 days	Wed 5/26/21	Tue 6/8/21	198SS	beton fc'21
200	2.2.11.19 Beton bertulang balok daak tan	14 days	Wed 5/26/21	Tue 6/8/21	199SS	beton fc'21
201	2.2.11.20 Beton bertulang balok daak tan	14 days	Wed 5/26/21	Tue 6/8/21	200SS	beton fc'21
202	2.2.11.21 Beton bertulang balok daak tan	14 days	Wed 5/26/21	Tue 6/8/21	201SS	beton fc'21
203	2.2.11.22 Beton bertulang balok daak tan	14 days	Wed 5/26/21	Tue 6/8/21	202SS	beton fc'21
204	2.2.11.23 Beton bertulang plat daak tang	14 days	Wed 5/26/21	Tue 6/8/21	203SS	beton fc'21
205	2.2.11.24 Beton bertulang balok daak lift:	14 days	Wed 5/26/21	Tue 6/8/21	204SS	beton fc'21
206	2.2.11.25 Beton bertulang balok daak lift:	14 days	Wed 5/26/21	Tue 6/8/21	205SS	beton fc'21
207	2.2.11.26 Beton bertulang plat daak lift:	14 days	Wed 5/26/21	Tue 6/8/21	206SS	beton fc'21
208	2.2.11.27 Beton bertulang konsol	14 days	Wed 5/26/21	Tue 6/8/21	207SS	beton fc'21
209	2.2.11.28 Waterproofing Neothane Syster	7 days	Wed 6/9/21	Tue 6/15/21	208	waterproo
210	2.2.12 PEKERJAAN RANGKA ATAP & ATAP	35 days	Wed 6/2/21	Tue 7/6/21		
211	2.2.12.1 Kuda2 dan kolom baja IWF, plat	18 days	Wed 6/2/21	Tue 6/29/21	208SS+1 wk	kuda-kuda
212	2.2.12.2 Gording kanal 2C 150.65.20.2.3	21 days	Wed 6/9/21	Tue 6/29/21	211FF	gording ka
213	2.2.12.3 Penutup Atap :	21 days	Wed 6/16/21	Tue 7/6/21	212SS+1 wk	penutup a
214	2.2.12.4 Lapis aluminium foil bhv atap	21 days	Wed 6/16/21	Tue 7/6/21	213FF	Lapis alu
215	2.2.12.5 Listplank GRC + rangka	7 days	Wed 6/30/21	Tue 7/6/21	214FF	lisplank G
216	2.2.12.6 Cat listplank	7 days	Wed 6/30/21	Tue 7/6/21	215FF	cat lisplank
217	3 PEKERJAAN FINISHING ARSITEKTUR	196 days	Wed 4/21/21	Tue 11/16/21		
218	3.1 PEKERJAAN FINISHING ARSITEKTUR LANTAI 1	140 days	Wed 4/21/21	Tue 9/21/21		
219	3.1.1 PEK. PAS. BT. BATA / PLESTERAN	42 days	Wed 4/21/21	Tue 6/15/21	150SS	pasangan
220	3.1.2 PEK. PAS. KOSEN & PARTISI	49 days	Wed 6/30/21	Tue 8/17/21	212	pasangan
221	3.1.3 PEK. PASANG LANTAI DAN DINDING	91 days	Wed 5/5/21	Tue 8/17/21	220FF	lantai hon
222	3.1.4 PEK. PLAFOND	56 days	Wed 4/28/21	Tue 7/6/21	219SS+1 wk	Plafond dr
223	3.1.5 PEK. SANITAIR	7 days	Wed 8/11/21	Tue 8/17/21	221FF	Kloset dud
224	3.1.6 PEK. CAT-CATAN	28 days	Wed 8/11/21	Tue 9/7/21	223SS	Cat tembo
225	3.1.7 PEK. LAIN-LAIN	28 days	Wed 8/25/21	Tue 9/21/21	223FS+1 wk	Railing ta
226	3.2 PEKERJAAN FINISHING ARSITEKTUR LANTAI 2	140 days	Wed 4/28/21	Tue 9/28/21		
227	3.2.1 PEK. PAS. BT. BATA / PLESTERAN	42 days	Wed 4/28/21	Tue 6/22/21	222SS	pasangan
228	3.2.2 PEK. PAS. KOSEN & PARTISI	42 days	Wed 8/4/21	Tue 9/14/21	224SS-1 wk	pasangan
229	3.2.3 PEK. PASANG LANTAI DAN DINDING	84 days	Wed 5/26/21	Tue 8/17/21	208SS	Lantai Hor
230	3.2.4 PEK. PLAFOND	77 days	Wed 5/5/21	Tue 8/3/21	221SS	Plafond dr
231	3.2.5 PEK. SANITAIR	7 days	Wed 8/18/21	Tue 8/24/21	229	Kloset dud
232	3.2.6 PEK. CAT-CATAN	28 days	Wed 8/18/21	Tue 9/14/21	231SS	Cat tembo
233	3.2.7 PEK. LAIN-LAIN	28 days	Wed 9/1/21	Tue 9/28/21	232SS+2 wk	Railing ta
234	3.3 PEKERJAAN FINISHING ARSITEKTUR LANTAI 3	161 days	Wed 4/28/21	Tue 10/19/21		
235	3.3.1 PEK. PAS. BT. BATA / PLESTERAN	49 days	Wed 4/28/21	Tue 6/29/21	227SS	pasangan
236	3.3.2 PEK. PAS. KOSEN & PARTISI	70 days	Wed 8/11/21	Tue 10/19/21	230FS+1 wk	pasangan
237	3.3.3 PEK. PASANG LANTAI DAN DINDING	77 days	Wed 6/9/21	Tue 8/24/21	231FF	lantai hon
238	3.3.4 PEK. PLAFOND	77 days	Wed 5/26/21	Tue 8/10/21	229SS	Plafond dr
239	3.3.5 PEK. SANITAIR	7 days	Wed 8/25/21	Tue 8/31/21	237	Kloset dud
240	3.3.6 PEK. CAT-CATAN	28 days	Wed 8/25/21	Tue 9/21/21	239SS	Cat tembo
241	3.3.7 PEK. LAIN-LAIN	28 days	Wed 9/8/21	Tue 10/5/21	239FS+1 wk	Railing ta
242	3.4 PEKERJAAN FINISHING ARSITEKTUR LANTAI 4	147 days	Wed 5/5/21	Tue 10/12/21		
243	3.4.1 PEK. PAS. BT. BATA / PLESTERAN	49 days	Wed 5/5/21	Tue 7/6/21	230SS	pasangan
244	3.4.2 PEK. PAS. KOSEN & PARTISI	56 days	Wed 8/18/21	Tue 10/12/21	239SS-1 wk	pasangan
245	3.4.3 PEK. PASANG LANTAI DAN DINDING	77 days	Wed 6/16/21	Tue 8/31/21	237SS+1 wk	Lantai Hor
246	3.4.4 PEK. PLAFOND	77 days	Wed 6/2/21	Tue 8/17/21	238SS+1 wk	Plafond dr
247	3.4.5 PEK. SANITAIR	7 days	Wed 9/3/21	Tue 9/7/21	245	Kloset dud
248	3.4.6 PEK. CAT-CATAN	28 days	Wed 9/3/21	Tue 9/28/21	247SS	Cat tembo
249	3.4.7 PEK. LAIN-LAIN	28 days	Wed 9/15/21	Tue 10/12/21	247FS+1 wk	Railing ta
250	3.5 PEKERJAAN FINISHING ARSITEKTUR LANTAI 5	147 days	Wed 5/26/21	Tue 10/19/21		
251	3.5.1 PEK. PAS. BT. BATA / PLESTERAN	49 days	Wed 5/26/21	Tue 7/13/21	236SS	pasangan
252	3.5.2 PEK. PAS. KOSEN & PARTISI	63 days	Wed 8/18/21	Tue 10/19/21	246	pasangan
253	3.5.3 PEK. PASANG LANTAI DAN DINDING	77 days	Wed 6/23/21	Tue 9/7/21	245SS+1 wk	Lantai Hor
254	3.5.4 PEK. PLAFOND	77 days	Wed 6/9/21	Tue 8/24/21	245SS-1 wk	Plafond dr
255	3.5.5 PEK. SANITAIR	7 days	Wed 9/8/21	Tue 9/14/21	253	Kloset dud
256	3.5.6 PEK. CAT-CATAN	28 days	Wed 9/8/21	Tue 10/5/21	255SS	Cat tembo
257	3.5.7 PEK. LAIN-LAIN	28 days	Wed 9/22/21	Tue 10/19/21	255FS+1 wk	Railing ta
258	3.6 PEKERJAAN FINISHING ARSITEKTUR LANTAI 6	147 days	Wed 6/2/21	Tue 10/26/21		
259	3.6.1 PEK. PAS. BT. BATA / PLESTERAN	49 days	Wed 6/2/21	Tue 7/20/21	246SS	pasangan
260	3.6.2 PEK. PAS. KOSEN & PARTISI	56 days	Wed 9/3/21	Tue 10/26/21	254FS+1 wk	pasangan
261	3.6.3 PEK. PASANG LANTAI DAN DINDING	77 days	Wed 6/30/21	Tue 9/14/21	255FF	Lantai Hor
262	3.6.4 PEK. PLAFOND	77 days	Wed 6/16/21	Tue 8/31/21	254SS+1 wk	Plafond dr
263	3.6.5 PEK. SANITAIR	7 days	Wed 9/15/21	Tue 9/21/21	261	Kloset dud
264	3.6.6 PEK. CAT-CATAN	28 days	Wed 9/15/21	Tue 10/12/21	263SS	Cat tembo

11/30



LEMBAR ASISTENSI



Nama : Farah Nurul Rakhima

Finda Mudyawawaliya



NIM : 30201700001

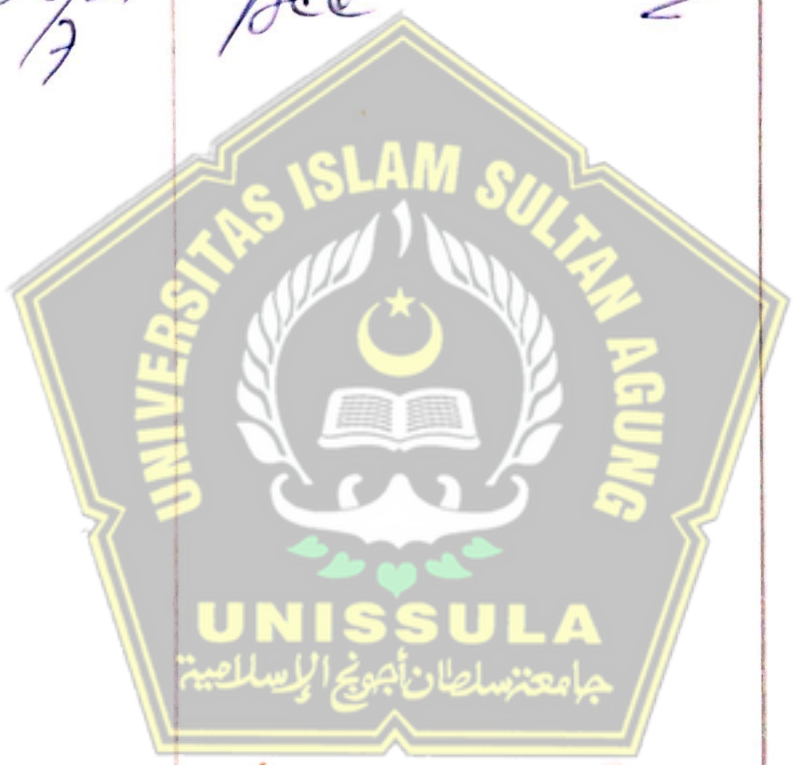
30201700071

Dosen Pembimbing : Dr. Ir. H. Kartono Wibowo, MM., MT

Ir. Gata Dian Asfari, MT

NO	TANGGAL	KETERANGAN	PARAF
1.	25 April '21	ACC BAB I	
2.	8 Juni '21	BAB II - gunakan perhitungan cost slope untuk dasar perhitungan. - 2.6 Perbaiki penulisan metode	
		BAB III - 3.2 Cek dan perbaiki! Lengkapi contoh TS Barchart crashing, overlapping, dan gabungan. - Perbaiki Diagram AITR! Sesuaikan uraian! - 3.5 Lengkapi cara pengumpulan Data!	
3.	8 Juli '21	BAB IV - Fast Trucking diganti Crashing - Kurva S harus dilengkapi Barchart semua! - Perbaiki semua rumus perhitungan cost slope	

4	13 Juli '21	<ul style="list-style-type: none"> - BAB II ACC - BAB III Perbaiki ulang TS bar chart pada metode crashing, overlapping, dan gabungan - BAB IV Perhitungan ACC 	
5	20/21 7	Acc	



LEMBAR ASISTENSI



Nama : Farah Nurul Rakhima

Finda Mudya Awaliya

NIM : 30201700001

30201700071

Dosen Pembimbing : Ir. Gata Dian Asfari, MT

NO	TANGGAL	KETERANGAN	PARAF
1.	21/04/2021	- Memberikan surat bimbingan TA	
2.	23/04/2021	- Pengajuan Proyek Pembangunan Gedung Kantor DPRD Provinsi Jawa Tengah	
3.	25/04/2021	- Bab I Pendahuluan - Membuat Daftar Isi	
4.	24/05/2021	- Bab 2 lengkapi langkah-langkah pada Ms. project - Melanjutkan bab 3	
5.	27/06/2021	- Bab 3 lengkapi rumus-rumus yang digunakan pada analisis data	

LEMBAR ASISTENSI



Nama : Farah Nurul Rakhima

Finda Mudya Awaliya

NIM : 30201700001

30201700071

Dosen Pembimbing : Ir. Gata Dian Asfari, MT

NO	TANGGAL	KETERANGAN	PARAF
6.	19/07/2021	<ul style="list-style-type: none">- Bab 4 dan 5- Untuk setiap perhitungan anggaran di masing-masing percepatan, buat dulu rekapitulasi biaya dan efisiensinya	
7.	21/07/2021	<ul style="list-style-type: none">- Mengirimkan keseluruhan Bab 1, 2, 3, 4, dan 5- Lanjutkan dan selesaikan <p>- Acc unt seminar</p>	



YAYASAN BADAN WAKAF SULTAN AGUNG
UNIVERSITAS ISLAM SULTAN AGUNG (UNISSULA)
Jl. Raya Katungwan Km 4 Semarang 50112 Telp: (024) 6501504 (R. 5) Fax: (024) 6507455
email : info@unissula.ac.id / web : www.unissula.ac.id

FARUKASTERNIK

UNISSULA Membantu dan Mendukung Keberhasilan Anda!

Nomor : 36 / A.2 / SA - T / VII / 2021

Pada hari ini, Selasa Tanggal 27 Juli 2021 telah dilaksanakan

Seminar Tugas Akhir, dengan peserta sebagai berikut :

1 Nama	Farah Nurul Rakhima	30201700001
2 Nama	Finda Mudya Awaliya	30201700071

Judul TA : Analisa Biaya Dan Waktu Pada Proyek Pembangunan Gedung Kantor DPRD Provinsi Jawa Tengah
0
0

Dengan Hasil

: Diterima dengan perbaikan

Demikian Berita Acara Seminar Tugas Akhir ini dibuat untuk diketahui dan penggunaan seperlunya.

Dosen Pembimbing I

Dosen Pembimbing II

Dosen Pembimbing

Dr. Ir. H. Kartono Wibowo, M.M., MT

Ir. Gata Dian Afseti, MT

Ir. H. Djoko Susilo Adhy, MT

Mengetahui,
Ketua Program Studi Teknik Sipil

M. Rusli Akbar, T.M. Eng

UNISSULA
جامعة سلطان أبو جوح الإسلامية



YAYASAN BADAN WAKAF SULTAN AGUNG
UNIVERSITAS ISLAM SULTAN AGUNG (UNISSULA)
Jl. Raya Kaligawe Km.4 Semarang 50132 Telp. (024) 6583504 (B. Sal) Fax (024) 6582455
email : informasi@unissula.ac.id web : www.unissula.ac.id

FAKULTAS TEKNIK

Bismillah Membangun Generasi Khaira Ummah

JUDUL TUGAS AKHIR
DALAM BAHASA INGGRIS

Hari Selasa
Tanggal 27 Juli 2021
Jam 11.00 WIB

Judul Tugas Akhir

Analisa Biaya Dan Waktu Pada Proyek Pembangunan Gedung Kantor DPRD Provinsi Jawa Tengah

0

0

JUDUL TUGAS AKHIR DALAM BAHASA INGGRIS

Cost and Time Analysis on the Development Project of
The DPRD Office Building of Central Java Province

1	Farah Nurul Rakhima	30201700001	1	
2	Finda Mudyaw Awaliya	30201700071	2	

Pembimbing Tugas Akhir

NO	NAMA	TANDA TANGAN
1	Dr.Ir.H. Kartono Wibowo,MM,MT	
2	Ir. Gata Dian Asfari,MT	

Semarang, 27 Juli 2021
Ketua Program Studi Teknik Sipil

M. Rusli Ahyar, S.T.M, Eng
NIK. 210216089



YAYASAN BADAN WAKAF SULTAN AGUNG
UNIVERSITAS ISLAM SULTAN AGUNG (UNISSULA)
Jl. Raya Kaligawe Km.4 Semarang 50112 Telp. (024) 6583504 (0 Sal) Fax (024) 6582455
email : informasi@unissula.ac.id web : www.unissula.ac.id

FAKULTAS TEKNIK

Bismillah Membangun Generasi Khaira Ummah

DOSEN PENGUJI
SEMINAR TUGAS AKHIR

Hari
Tanggal
Jam

Selasa
27 Juli 2021
11.00 WIB

Judul Tugas Akhir

Analisa Biaya Dan Waktu Pada Proyek Pembangunan Gedung Kantor DPRD Provinsi Jawa Tengah

1	Farah Nurul Rakhima	30201700001	1	
2	Finda Mudya Awaliya	30201700071	2	

NO	NAMA	TANDA TANGAN
1	Dr.Ir.H. Kartono Wibowo,MM,MT	
2	Ir. Gata Dian Asfari, MT	
3	Ir. H. Djoko Susilo Adhy, MT	

Semarang, 27 Juli 2021
Ketua Program Studi Teknik Sipil

M Rusli Ahyar, ST, M. Eng
NIK. 210216089



YAYASAN BADAN WAKAF SULTAN AGUNG
UNIVERSITAS ISLAM SULTAN AGUNG (UNISSULA)
Jl. Raya Kaligawe Km.4 Semarang 50112 Telp. (024) 6583504 (0.5x) Fax (024) 6582455
email : informasi@unissula.ac.id web : www.unissula.ac.id

FAKULTAS TEKNIK

Dinillah Membangun Generasi Khalifa Ummah

Nomor : 36 / A.2 / SA - T / VII / 2021

Pada hari ini, Selasa Tanggal 27 Juli 2021 telah dilaksanakan

Seminar Tugas Akhir, dengan peserta sebagai berikut :

1 Nama	Farah Nurul Rakhima	30201700001
2 Nama	Finda Mudyawawaliya	30201700071

Judul TA Analisa Biaya Dan Waktu Pada Proyek Pembangunan Gedung Kantor DPRD Provinsi Jawa Tengah
0
0

Dengan Hasil

Diterima dengan perbaikan

Demikian Berita Acara Seminar Tugas Akhir ini dibuat untuk diketahui dan penggunaan seperlunya.

Dosen Pembimbing I

Dosen Pembimbing II

Dosen Perbanding

Dr.Ir.H. Kartono Wibowo,MM,MT

Ir. Gata Dian Asfari,MT

Ir. H. Djoko Susilo Adhy,MT

Mengetahui,
Ketua Program Studi Teknik Sipil

M Rusli Anwar, T.M.Eng

Analisa biaya dan waktu pada proyek pembangunan gedung kantor DPRD provinsi Jawa Tengah

ORIGINALITY REPORT

23% SIMILARITY INDEX	22% INTERNET SOURCES	2% PUBLICATIONS	15% STUDENT PAPERS
--------------------------------	--------------------------------	---------------------------	------------------------------

PRIMARY SOURCES

1	digilib.unila.ac.id Internet Source	5%
2	www.researchgate.net Internet Source	5%
3	pt.scribd.com Internet Source	1%
4	www.neliti.com Internet Source	1%
5	idoc.pub Internet Source	1%
6	repository.polimdo.ac.id Internet Source	1%
7	Submitted to Sriwijaya University Student Paper	1%
8	123dok.com Internet Source	1%
9	eprints.umm.ac.id Internet Source	1%

10	journal.umy.ac.id Internet Source	1 %
11	text-id.123dok.com Internet Source	1 %
12	core.ac.uk Internet Source	1 %
13	dspace.uui.ac.id Internet Source	<1 %
14	Submitted to Universitas Katolik Widya Mandala Student Paper	<1 %
15	e-journal.uajy.ac.id Internet Source	<1 %
16	es.scribd.com Internet Source	<1 %
17	adoc.pub Internet Source	<1 %
18	Submitted to Universitas Sultan Ageng Tirtayasa Student Paper	<1 %
19	repository.untag-sby.ac.id Internet Source	<1 %
20	softwarekeep.ca Internet Source	<1 %

21	repository.its.ac.id Internet Source	<1 %
22	docplayer.info Internet Source	<1 %
23	id.123dok.com Internet Source	<1 %
24	repositori.uin-alauddin.ac.id Internet Source	<1 %
25	zamilconsulting.com Internet Source	<1 %
26	www.scribd.com Internet Source	<1 %
27	katalogbukuonline.blogspot.com Internet Source	<1 %
28	rendirian.blogspot.com Internet Source	<1 %
29	sinta.unud.ac.id Internet Source	<1 %
30	www.arsimedia.com Internet Source	<1 %
31	www.pahlevi.net Internet Source	<1 %
32	Submitted to Surabaya University Student Paper	<1 %

33 Submitted to Universitas Pelita Harapan <1 %
Student Paper

34 digilib.uin-suka.ac.id <1 %
Internet Source

35 ejournal.unsrat.ac.id <1 %
Internet Source

36 repository.umsu.ac.id <1 %
Internet Source

37 Indra Suharyanto, Sigit Erfanto. "ANALISA
PENAMBAHAN JAM KERJA/LEMBUR
TERHADAP EFISIENSI BIAYA SEWA ALAT- ALAT
BERAT PADA PROYEK KONSTRUKSI (Studi
Kasus Pada Proyek Pemecah Gelombang
Glagah Bagian Timur, Kabupaten Kulon Progo,
DIY)", CivETech, 2020 <1 %
Publication

38 Submitted to Universitas Pancasila <1 %
Student Paper

39 Repository.umy.ac.id <1 %
Internet Source

40 didiek.staff.gunadarma.ac.id <1 %
Internet Source

41 gorillapuber.blogspot.com <1 %
Internet Source

42 repositori.usu.ac.id
Internet Source

		<1 %
43	edoc.site Internet Source	<1 %
44	eprints.undip.ac.id Internet Source	<1 %
45	Submitted to North Down and Ards Institute of Further and Higher Education Student Paper	<1 %
46	Submitted to Universitas Negeri Semarang Student Paper	<1 %
47	repo.unhi.ac.id Internet Source	<1 %
48	Submitted to Universitas International Batam Student Paper	<1 %
49	Submitted to Universitas Nasional Student Paper	<1 %
50	eprints.unm.ac.id Internet Source	<1 %
51	digilib.uinsby.ac.id Internet Source	<1 %
52	moam.info Internet Source	<1 %
53	e-journal.upr.ac.id Internet Source	

<1 %

54 geovanigoncales.blogspot.com
Internet Source

<1 %

55 repository.mercubuana.ac.id
Internet Source

<1 %

56 repository.setiabudi.ac.id
Internet Source

<1 %

57 repository.uin-suska.ac.id
Internet Source

<1 %

58 caridokumen.com
Internet Source

<1 %

59 qdoc.tips
Internet Source

<1 %

60 eprints.itn.ac.id
Internet Source

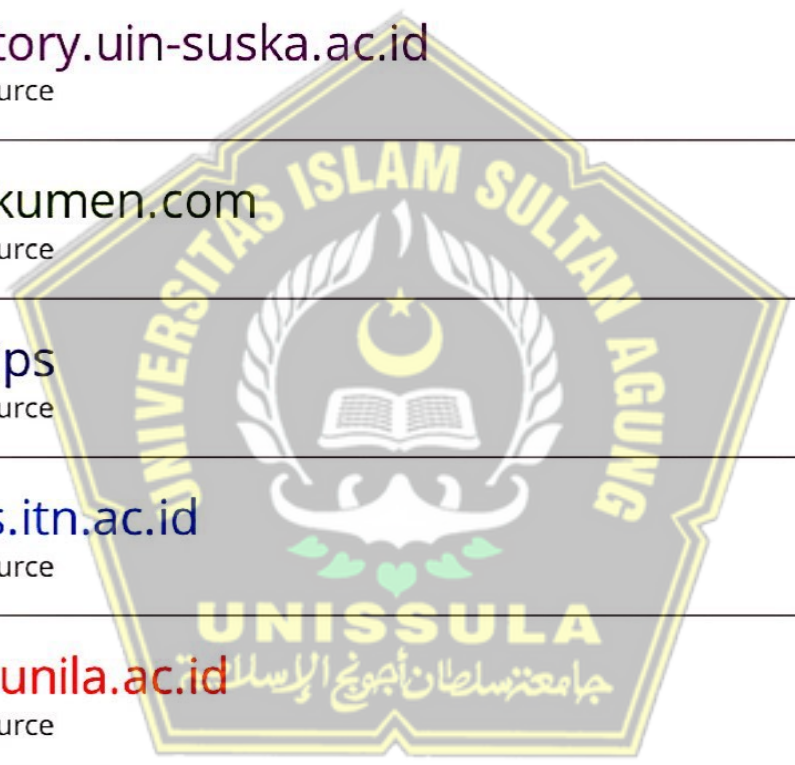
<1 %

61 ft-sipil.unila.ac.id
Internet Source

<1 %

62 konsultasiskripsi.com
Internet Source

<1 %



Exclude quotes Off

Exclude matches Off

Exclude bibliography Off