

LAMPIRAN

LAMPIRAN 1. PERUSAHAAN YANG MENJADI SAMPEL PENELITIAN

NO	KODE	NAMA BANK
1	AGRO	PT Bank Rakyat Indonesia Agroniaga Tbk
2	AGRS	PT Bank Agris Tbk
4	BABP	PT Bank MNC International Tbk
5	BACA	PT Bank Capital Indonesia Tbk
6	BBCA	PT Bank Central Asia Tbk
8	BBKP	PT Bank Bukopin Tbk
9	BBMD	PT Bank Mestika Dharma Tbk
10	BBNI	PT Bank Negara Indonesia Tbk
11	BBNP	PT Bank Nusantara Parahyangan Tbk
12	BBRI	PT Bank Rakyat Indonesia Tbk
13	BBTN	PT Bank Tabungan Negara Tbk
15	BCIC	PT Bank Jtrust Indonesia Tbk
16	BDMN	PT Bank Danamon Indonesia Tbk
18	BGTG	PT Bank Ganesha Tbk
19	BINA	PT Bank Iana Perdana Tbk
20	BJBR	PT Bank Pembangunan Daerah Jawa Barat Tbk
21	BJTM	PT Bank Pembangunan Daerah Jawa Timur Tbk
22	BKSW	PT Bank QNB Indonesia Tbk
23	BMAS	PT Bank Maspion Indonesia Tbk
23	BMRI	PT Bank Mandiri Tbk

24	BNBA	PT Bank Bumi Arta Tbk
26	BNGA	PT Bank CIMB Niaga Tbk
27	BNII	PT Bank Maybank Indonesia Tbk
28	BNLI	PT Bank Permata Tbk
29	BSIM	PT Bank Sinarmas Tbk
30	BSWD	PT Bank of India Indonesia Tbk
31	BTPN	PT Bank BTPN Tbk
32	BVIC	PT Bank Victoria Internasional Tbk
33	DNAR	PT Bank Dinar Indonesia Tbk
34	INPC	PT Bank Artha Graha Internasional Tbk
35	MAYA	PT Bank Mayapada Internasional Tbk
36	MCOR	PT Bank China Construction Bank Indonesia Tbk
37	MEGA	PT Bank Mega Tbk
38	NAGA	PT Bank Mitraniaga Tbk
39	NISP	PT Bank OCBC NISP Tbk
40	NOBU	PT Bank National Nobu Tbk
41	PNBN	PT Bank Pan Indonesia Tbk
42	PNBS	PT Bank Panin Dubai Syariah
43	SDRA	PT Bank Woori Saudara Indonesia Tbk

LAMPIRAN 2. HASIL TABULASI DATA PENELITIAN

KODE	TAHUN	ROA	ROE	LDR	PER / BOPO	NPM	CSR	PER
AGRO	2014	0,97	6,86	0,855	-1,2883	10,36	0,329	13,7
AGRS	2014	0,11	0,97	0,676	-1,1913	1,43	0,468	112,98
BABP	2014	-0,58	-4,42	0,769	-1,2045	-7,17	0,367	162,1
BACA	2014	0,81	7,65	0,576	-1,2497	9,41	0,354	14,31
BBCA	2014	2,99	21,19	0,752	-1,1050	37,72	0,329	18,02
BBKP	2014	0,92	10,65	0,806	-1,6989	10,25	0,329	6,56
BBMD	2014	2,73	11,12	1,002	-1,1870	27,10	0,367	26,24
BBNI	2014	2,6	17,75	0,894	-2,9887	32,46	0,329	10,16
BBNP	2014	1,02	8,48	0,822	-1,1335	8,94	0,354	18,64
BBRI	2014	3,02	24,82	0,759	-1,5356	32,29	0,304	10,99
BBTN	2014	0,79	9,35	1,062	-1,2872	8,94	0,911	7,33
BCIC	2014	-5,22	-64,93	0,653	-1,1341	-55,43	0,329	-2,08
BDMN	2014	1,37	8,12	0,898	-1,4317	11,67	0,316	12,69
BGTG	2014	-1,32	-18,73	0,791	-1,1492	-7,09	0,354	0
BINA	2014	0,79	5,07	0,764	-1,1101	8,41	0,911	35,72
BJBR	2014	1,48	15,81	0,928	-1,1858	12,74	0,392	5,26
BJTM	2014	2,47	15,54	0,848	-1,2438	22,99	0,329	7,3
BKSW	2014	0,58	5,3	0,837	-1,8458	9,90	0,316	16,11
BMAS	2014	0,51	3,84	755,997	-1,1879	5,91	0,405	37,94
BMRI	2014	2,42	19,7	0,841	-2,3744	32,97	0,405	10,51
BNBA	2014	1,01	8,61	0,793	-1,1313	9,76	0,329	7,63
BNGA	2014	1,01	8,24	0,958	-1,4531	11,26	0,304	34,6
BNII	2014	0,5	4,86	0,923	-1,3873	5,32	0,443	10,07
BNLI	2014	0,86	9,28	0,875	-1,1753	10,21	0,456	44,99
BSIM	2014	0,73	4,9	0,803	-1,3192	8,63	0,316	29,81
BSWD	2014	2,04	18,94	0,777	-2,2747	24,05	0,405	-82,99
BTPN	2014	2,49	15,5	0,968	-1,1641	15,20	0,329	8,15
BVIC	2014	0,49	6,01	0,710	-1,5636	5,20	0,468	7,9
DNAR	2014	0,19	0,74	0,710	-1,0601	2,50	0,316	17,95
INPC	2014	0,47	4,07	0,863	-1,1210	4,92	0,456	11,63
MAYA	2014	1,2	15,27	0,811	-1,1627	12,22	0,405	12,74
MCOR	2014	0,54	4,33	0,822	-1,0957	5,88	0,316	28,82
MEGA	2014	0,9	8,61	0,617	-1,6650	10,02	0,405	21,45
NAGA	2014	0,33	3,37	0,519	-1,5658	3,86	0,418	30,8
NISP	2014	1,29	8,94	0,880	-1,4255	16,85	0,911	9,65
NOBU	2014	0,27	1,33	0,525	-1,0885	4,08	0,367	105,97
PNBN	2014	1,5	11,12	0,855	-1,7790	16,67	0,481	13,89

KODE	TAHUN	ROA	ROE	LDR	PER / BOPO	NPM	CSR	PER
PNBS	2014	1,14	6,61	0,000	-1,3510	13,47	0,405	45,57
SDRA	2014	0,84	3,54	0,988	-8,6563	54,89	0,329	20,83
AGRO	2015	0,96	5,95	0,861	-1,2124	10,23	0,329	54,04
AGRS	2015	0,09	0,69	0,758	-0,9761	0,96	0,468	38,57
BABP	2015	0,07	0,48	0,686	-1,2656	0,86	0,557	135,11
BACA	2015	0,75	8,62	0,558	-1,2463	8,10	0,481	10,67
BBCA	2015	3,03	20,12	0,792	-1,9088	38,31	0,329	18,95
BBKP	2015	1,02	12,8	0,830	-1,6831	11,61	0,354	4,96
BBMD	2015	2,56	10,64	0,997	-1,1858	24,58	0,367	45,55
BBNI	2015	1,8	11,65	0,877	-2,1617	24,77	0,329	10,01
BBNP	2015	0,78	5,59	0,879	-1,1168	6,64	0,354	35,28
BBRI	2015	2,89	22,46	1,940	-1,6577	29,74	0,304	11,4
BBTN	2015	1,08	13,35	1,058	-1,2587	12,37	0,911	8,52
BCIC	2015	-5,13	-67,73	0,805	-1,1091	-63,12	0,329	-11,06
BDMN	2015	1,31	7,22	0,851	-1,3989	11,01	0,316	10,6
BGTG	2015	-5,55	-106,6	0,768	-1,1203	-32,81	0,354	22,11
BINA	2015	0,81	5,28	0,832	-1,0707	7,50	0,911	27,26
BJBR	2015	1,56	17,8	0,814	-1,1788	13,69	0,392	21,19
BJTM	2015	2,07	14,05	0,781	-1,1760	18,80	0,329	7,64
BKSW	2015	0,61	6,44	0,959	-1,4391	7,65	0,316	0
BMAS	2015	0,75	4,74	0,911	-1,3585	8,20	0,405	29,08
BMRI	2015	2,32	17,7	0,889	-1,8293	29,55	0,405	16,86
BNBA	2015	0,87	4,62	0,823	-1,1395	8,62	0,329	7,19
BNGA	2015	0,18	1,49	0,889	-1,2812	1,92	0,304	12,26
BNII	2015	0,73	7,26	0,864	-1,5196	8,22	0,443	13,36
BNLI	2015	0,14	1,31	0,852	-1,3646	1,53	0,456	7,54
BSIM	2015	0,66	5,05	0,738	-1,4086	7,78	0,316	18,67
BSWD	2015	-0,73	-4,01	0,706	-1,1069	-8,06	0,405	-3,12
BTPN	2015	2,16	12,59	1,021	-1,1348	13,48	0,354	8,27
BVIC	2015	0,4	4,45	0,696	-1,7711	4,67	0,481	122,08
DNAR	2015	0,68	3,24	0,701	-1,0495	7,56	0,316	54,45
INPC	2015	0,28	2,58	0,796	-1,1195	2,95	0,468	11,68
MAYA	2015	1,38	14,22	0,826	-1,0599	13,04	0,418	15,41
MCOR	2015	0,67	4,77	0,848	-1,0839	6,73	0,380	34,26
MEGA	2015	1,54	9,14	0,617	-1,9110	16,30	0,405	11,67
NAGA	2015	0,54	5,18	0,592	-1,2689	4,86	0,430	29,06
NISP	2015	1,25	9,15	0,962	-1,4351	16,28	0,354	13,11
NOBU	2015	0,27	1,53	0,633	-1,0654	3,67	0,380	108,36
PNBN	2015	0,86	5,09	0,880	-1,2131	9,27	0,481	7,93

KODE	TAHUN	ROA	ROE	LDR	PER / BOPO	NPM	CSR	PER
PNBS	2015	0,75	4,64	0,000	-1,1086	7,53	0,418	51,4
SDRA	2015	1,32	6,41	0,952	-1,5007	17,11	0,405	18,32
AGRO	2016	0,91	5,32	0,982	-1,4475	10,67	0,329	66,94
AGRS	2016	0,08	0,59	0,831	-1,0598	0,90	0,468	110,34
BABP	2016	0,07	0,5	0,732	-1,3993	0,88	0,499	-11,48
BACA	2016	0,66	7,11	0,536	-1,4733	7,55	0,354	18,64
BBCA	2016	3,05	18,3	0,753	-1,0912	40,92	0,329	23,16
BBKP	2016	1,03	11,43	0,826	-1,8931	11,59	0,354	6,1
BBMD	2016	1,69	6,68	0,793	-1,1905	17,48	0,456	19,66
BBNI	2016	1,89	12,78	0,886	-2,0766	26,07	0,329	13,56
BBNP	2016	0,11	0,68	0,835	-1,0877	0,90	0,354	-16,45
BBRI	2016	2,61	17,86	0,821	-1,8656	28,46	0,304	15,48
BBTN	2016	1,22	13,69	0,992	-1,3126	15,28	0,380	12,49
BCIC	2016	-4,47	-53,11	0,775	-1,1009	-53,53	0,329	11,66
BDMN	2016	1,6	7,68	0,862	-1,4301	13,52	0,354	18,09
BGTG	2016	-7,71	-46,86	0,806	-1,1322	-84,95	0,329	18,14
BINA	2016	0,77	3,78	0,728	-1,0767	7,55	0,911	522,48
BJBR	2016	1,13	11,92	0,793	-1,1663	10,80	0,392	19,2
BJTM	2016	2,39	14,26	0,834	-1,1743	20,97	0,342	9,17
BKSW	2016	-2,67	-18,7	0,877	-1,1448	-31,75	0,316	-5,16
BMAS	2016	1,24	6,13	0,999	-1,2970	13,03	0,418	25,06
BMRI	2016	1,41	9,55	0,079	-2,6096	19,10	0,418	18,09
BNBA	2016	1,11	6,07	0,783	-1,1083	10,98	0,329	9,98
BNGA	2016	0,86	6,09	0,938	-1,4723	9,76	0,304	11,39
BNII	2016	1,18	10,21	0,846	-1,5230	14,52	0,443	9,91
BNLI	2016	-3,92	-33,61	0,713	-1,0652	-45,03	0,456	23,42
BSIM	2016	1,19	8,28	0,735	-1,5436	12,86	0,316	52,77
BSWD	2016	-11,73	-45,57	0,699	-1,1798	-123,75	0,405	-21,27
BTPN	2016	2,05	11,5	1,005	-1,0977	13,70	0,329	11,77
BVIC	2016	386	3,82	0,684	-2,4355	4,64	0,468	8,85
DNAR	2016	0,57	2,93	0,824	-1,0480	6,70	0,316	62,5
INPC	2016	0,28	1,65	0,858	-1,1336	3,21	0,329	12,2
MAYA	2016	1,35	11,63	0,001	-1,0301	13,60	0,354	19,31
MCOR	2016	0,18	0,93	0,850	-1,0733	2,08	0,494	36,12
MEGA	2016	1,64	9,44	0,685	-1,8596	18,82	0,291	17,89
NAGA	2016	0,54	5,19	0,501	-1,0917	5,26	0,354	55,01
NISP	2016	1,3	9,18	1,033	-1,8158	17,54	0,392	9,89
NOBU	2016	0,34	2,28	0,524	-1,0715	5,41	0,329	144,37
PNBN	2016	1,26	7,36	0,888	-1,4012	14,43	0,316	11,38

KODE	TAHUN	ROA	ROE	LDR	PER / BOPO	NPM	CSR	PER
PNBS	2016	0,22	1,64	0,000	-1,1125	2,82	0,430	-0,68
SDRA	2016	1,37	7,02	1,037	-1,4763	17,47	0,456	13,35
AGRO	2017	0,86	4,52	0,882	-1,2974	11,22	0,329	29,49
AGRS	2017	-0,21	-1,47	0,547	-1,0414	-2,32	0,468	-100,45
BABP	2017	-6,4	-54,7	0,751	-1,0915	-67,07	0,476	7,93
BACA	2017	0,53	6,12	5,043	-1,2768	6,68	0,354	15,91
BBCA	2017	3,11	17,75	0,774	-1,1334	43,37	0,329	25,72
BBKP	2017	0,13	2,01	0,782	-1,3491	1,41	0,354	7,2
BBMD	2017	2,23	8,56	0,793	-1,3246	25,70	0,367	19,79
BBNI	2017	1,94	13,65	0,875	-2,2299	28,58	0,329	10,65
BBNP	2017	9,28	61,85	1,223	-0,9882	85,31	0,354	44,83
BBRI	2017	2,58	17,36	0,814	-1,9866	28,23	0,304	14,28
BBTN	2017	1,16	13,98	1,110	-1,3518	15,71	0,911	8,93
BCIC	2017	0,71	8,04	0,874	-1,4916	8,10	0,329	-13,59
BDMN	2017	2,33	10,59	0,883	-1,4091	20,70	0,316	20,11
BGTG	2017	-1	-9,68	0,757	-1,2075	-14,42	0,354	17,4
BINA	2017	0,59	1,52	0,753	-1,0858	7,39	0,911	-633,68
BJBR	2017	1,07	1,07	0,807	-1,1912	10,72	0,392	11,01
BJTM	2017	2,25	14,83	0,735	-1,2015	23,71	0,329	7,24
BKSW	2017	-3,21	-19,79	0,679	-1,4303	-48,05	0,329	-17,25
BMAS	2017	1,15	5,98	33,666	-1,2824	14,02	0,405	29,95
BMRI	2017	1,91	12,61	0,900	-2,7500	26,97	0,405	14,12
BNBA	2017	1,28	6,57	0,813	-1,1363	13,21	0,329	7,82
BNGA	2017	1,12	8,06	26,351	-1,5166	14,59	0,304	20,72
BNII	2017	1,12	9,35	0,893	-1,5256	13,07	0,443	7,78
BNLI	2017	2,25	15,51	0,793	-1,5439	29,79	0,456	26,34
BSIM	2017	1,05	6,58	0,743	-1,3557	10,27	0,329	24,46
BSWD	2017	-2,83	-11,33	0,638	-1,2316	-42,55	0,405	52,88
BTPN	2017	1,49	8,27	1,025	-1,0622	10,12	0,329	9,21
BVIC	2017	0,47	4,78	0,688	-2,3035	5,94	0,468	18,89
DNAR	2017	0,4	2,2	0,673	-1,0475	5,07	0,329	63,51
INPC	2017	0,25	1,51	0,009	-1,0822	2,84	0,456	15,78
MAYA	2017	0,9	7,91	0,901	-1,0289	9,67	0,405	43,94
MCOR	2017	0,32	2,04	0,795	-1,0834	4,35	0,316	25,93
MEGA	2017	11,6	73,1	0,557	2,7894	149,36	0,405	22,44
NAGA	2017	0,24	2,66	40,787	-1,2212	2,75	0,418	39,87
NISP	2017	1,41	9,99	2,328	-1,8176	19,71	0,911	7,16
NOBU	2017	0,32	2,51	0,513	-1,1342	5,64	0,367	90,94
PNBN	2017	0,94	5,53	0,862	-1,4848	11,49	0,481	9,7

KODE	TAHUN	ROA	ROE	LDR	PER / BOPO	NPM	CSR	PER
PNBS	2017	-11,23	-353,34	0,000	-1,0777	-122,11	0,405	75,59
SDRA	2017	1,62	7,18	1,020	-1,4767	22,04	0,329	10,73
AGRO	2018	0,8	3,81	0,838	-1,1079	13,79	0,329	32,16
AGRS	2018	-0,23	-1,67	0,850	-1,0627	-3,61	0,468	-169,66
BABP	2018	0,95	7,37	0,862	-1,9478	14,48	0,476	7,93
BACA	2018	0,55	6,74	0,495	-1,1528	9,11	0,354	15,7
BBCA	2018	2,32	12,88	0,810	-1,1136	36,84	0,329	27,87
BBKP	2018	0,36	3,76	0,875	-1,3122	5,26	0,354	9,64
BBMD	2018	1,78	7,07	0,813	-1,2697	27,11	0,367	19,79
BBNI	2018	1,87	13,67	0,880	-2,1113	27,88	0,329	11,16
BBNP	2018	0,36	2,14	0,954	-1,0885	4,42	0,354	44,83
BBRI	2018	1,15	8,96	0,951	-2,0662	27,84	0,304	14,53
BBTN	2018	0,82	9,62	1,095	-1,3164	14,07	0,911	9,63
BCIC	2018	0	-15,24	0,779	-1,1136	-22,25	0,329	-13,59
BDMN	2018	1,57	6,87	0,970	-1,3984	18,60	0,316	24,08
BGTG	2018	-1,2	-15,21	0,857	-1,1299	-25,44	0,354	20,16
BINA	2018	0,1	0,32	0,666	-1,0595	1,88	0,911	-558,02
BJBR	2018	1,18	11,61	0,901	-1,2325	15,34	0,392	12,7
BJTM	2018	2,01	14,88	0,642	-1,2085	24,23	0,329	8,77
BKSW	2018	-0,76	-4,18	0,706	-1,4161	-16,25	0,329	-17,54
BMAS	2018	0,67	3,47	0,987	-1,1953	10,79	0,405	25,56
BMRI	2018	2,15	13,98	0,981	-2,1814	28,30	0,405	13,76
BNBA	2018	0,86	4,35	0,843	-1,1449	12,69	0,329	8,6
BNGA	2018	0,99	9,1	0,898	-1,5506	17,21	0,304	25,02
BNII	2018	0,89	6,48	1,053	-1,3819	14,04	0,443	9,29
BNLI	2018	0,32	2,27	0,955	-1,4475	6,04	0,456	42,56
BSIM	2018	0,83	5,06	0,741	-1,3381	11,27	0,329	24,24
BSWD	2018	0,78	2,94	0,811	-1,2082	14,06	0,405	52,88
BTPN	2018	2,22	11,66	1,039	-1,0921	15,98	0,329	11,15
BVIC	2018	0,24	2,34	0,803	-1,5878	3,72	0,468	16,9
DNAR	2018	0,31	1,56	0,744	-1,0347	4,82	0,329	70,41
INPC	2018	0,17	1,01	0,836	-1,0704	2,79	0,456	20,61
MAYA	2018	0,91	7,55	2,992	-1,0321	13,01	0,405	43,15
MCOR	2018	0,43	2,68	0,878	-1,1410	7,53	0,316	30,86
MEGA	2018	1,46	8,87	0,003	-2,0334	22,48	0,405	22,12
NAGA	2018	0,23	2,59	0,472	-1,1120	3,32	0,418	54,05
NISP	2018	1,52	10,8	0,904	-1,4879	21,59	0,911	8,09
NOBU	2018	0,35	2,6	0,807	-1,2684	6,49	0,367	87,76
PNBN	2018	1,05	5,53	0,989	-1,2822	16,74	0,481	11,95

KODE	TAHUN	ROA	ROE	LDR	PER / BOPO	NPM	CSR	PER
PNBS	2018	0,14	0,71	0,000	-1,3635	2,60	0,405	92,22
SDRA	2018	1,36	6,12	1,400	-1,4115	23,77	0,329	10,61

LAMPIRAN 3. OUTPUT SPSS

Descriptives (sebelum outlier)

Descriptive Statistics

	N	Minimum	Maximum	Mean	Std. Deviation
ROA	215	-11.73	386.00	2.4513	26.37065
ROE	215	-353.34	73.10	2.7128	29.46438
NIM	215	-123.75	149.36	7.9709	24.79027
LDR	215	.00	756.00	4.7646	51.62394
BOPO	215	-8.66	2.79	-1.3232	.71086
CSR	215	.29	.91	.4172	.14087
PER	215	-633.68	522.48	16.7503	76.40984
Valid N (listwise)	215				

Descriptives (setelah outlier)

Descriptive Statistics

	N	Minimum	Maximum	Mean	Std. Deviation
ROA	157	-7.71	9.28	1.0828	1.55888
ROE	157	-54.70	64.76	7.3571	12.17714
NIM	157	-84.95	85.31	12.4990	17.18012
LDR	157	.00	40.79	1.4801	4.59542
BOPO	157	-2.99	.00	-1.3664	.39392
CSR	157	.29	.91	.4104	.13830
PER	157	6.10	55.01	19.9608	12.36542
Valid N (listwise)	157				

Regression (Uji Hipotesis)

Variables Entered/Removed^b

Model	Variables Entered	Variables Removed	Method
1	CSR, ROE, LDR, BOPO, NIM, ROA ^a	.	Enter

a. All requested variables entered.

b. Dependent Variable: LOGPER

Model Summary^b

Model	R	R Square	Adjusted R Square	Std. Error of the Estimate	Durbin-Watson
1	.395 ^a	.156	.122	.23408	2.193

a. Predictors: (Constant), CSR, ROE, LDR, BOPO, NIM, ROA

b. Dependent Variable: LOGPER

ANOVA^b

Model		Sum of Squares	df	Mean Square	F	Sig.
1	Regression	1.515	6	.253	4.609	.000 ^a
	Residual	8.219	150	.055		
	Total	9.735	156			

a. Predictors: (Constant), CSR, ROE, LDR, BOPO, NIM, ROA

b. Dependent Variable: PER

Coefficients^a

Model		Unstandardized Coefficients		Standardized Coefficients	t	Sig.	Collinearity Statistics	
		B	Std. Error	Beta			Tolerance	VIF
1	(Constant)	1.642	.099		16.552	.000		
	ROA	-.092	.067	-.572	-1.366	.174	.321	3.111
	ROE	-.001	.005	-.047	-.183	.855	.848	1.179
	NIM	.010	.005	.705	1.995	.048	.451	2.215
	LDR	.007	.004	.120	1.595	.113	.998	1.002
	BOPO	.261	.054	.411	4.833	.000	.777	1.288
	CSR	-.221	.141	-.122	-1.570	.118	.926	1.079

a. Dependent Variable: LOGPER

Coefficient Correlations[§]

Model			CSR	ROE	LDR	BOPO	NIM	ROA
1	Correlations	CSR	1.000	-.222	.027	-.116	-.107	.229
		ROE	-.222	1.000	-.007	.031	-.028	-.566
		LDR	.027	-.007	1.000	-.017	-.025	.028
		BOPO	-.116	.031	-.017	1.000	.429	-.330
		NIM	-.107	-.028	-.025	.429	1.000	-.787
		ROA	.229	-.566	.028	-.330	-.787	1.000
	Covariances	CSR	.020	.000	1.53E-005	-.001	-7.8E-005	.002
		ROE	.000	2.79E-005	-1.4E-007	8.80E-006	-7.7E-007	.000
		LDR	1.53E-005	-1.4E-007	1.67E-005	-3.8E-006	-5.3E-007	7.68E-006
		BOPO	-.001	8.80E-006	-3.8E-006	.003	.000	-.001
		NIM	-7.8E-005	-7.7E-007	-5.3E-007	.000	2.64E-005	.000
		ROA	.002	.000	7.68E-006	-.001	.000	.004

a. Dependent Variable: LOGPER

Collinearity Diagnostics[§]

Model	Dimension	Eigenvalue	Condition Index	Variance Proportions							
				(Constant)	ROA	ROE	NIM	LDR	BOPO	CSR	
1	1	4.657	1.000	.00	.00	.00	.00	.00	.00	.00	.00
	2	1.315	1.882	.00	.00	.01	.00	.11	.00	.01	
	3	.842	2.352	.00	.00	.00	.00	.88	.00	.01	
	4	.099	6.853	.00	.00	.05	.01	.00	.23	.46	
	5	.044	10.343	.00	.03	.76	.20	.00	.08	.10	
	6	.032	12.130	.57	.09	.02	.07	.00	.33	.28	
	7	.012	20.050	.41	.87	.16	.72	.00	.35	.14	

a. Dependent Variable: LOGPER

Residuals Statistics^a

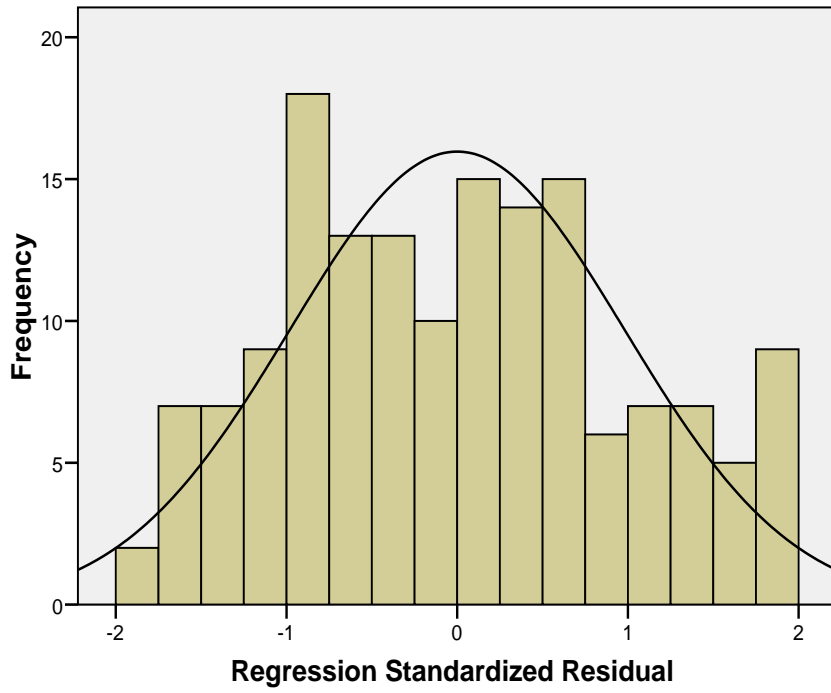
	Minimum	Maximum	Mean	Std. Deviation	N
Predicted Value	.8727	1.5388	1.2264	.09856	157
Std. Predicted Value	-3.589	3.169	.000	1.000	157
Standard Error of Predicted Value	.020	.162	.043	.025	157
Adjusted Predicted Value	.8543	1.5336	1.2250	.09910	157
Residual	-.42498	.46281	.00000	.22954	157
Std. Residual	-1.816	1.977	.000	.981	157
Stud. Residual	-1.826	1.987	.003	1.000	157
Deleted Residual	-.42993	.52730	.00137	.23942	157
Stud. Deleted Residual	-1.841	2.007	.003	1.004	157
Mahal. Distance	.108	73.619	5.962	10.443	157
Cook's Distance	.000	.211	.007	.019	157
Centered Leverage Value	.001	.472	.038	.067	157

a. Dependent Variable: LOGPER

Charts

Histogram

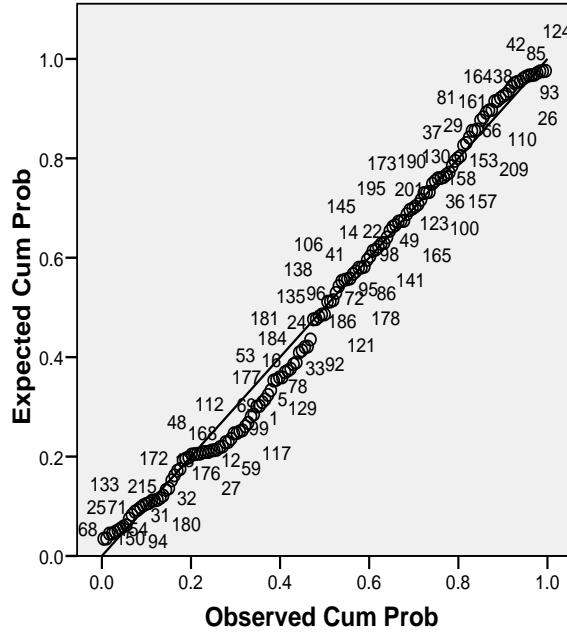
Dependent Variable: LOGPER



Mean = -8.14E-16
Std. Dev. = 0.981
N = 157

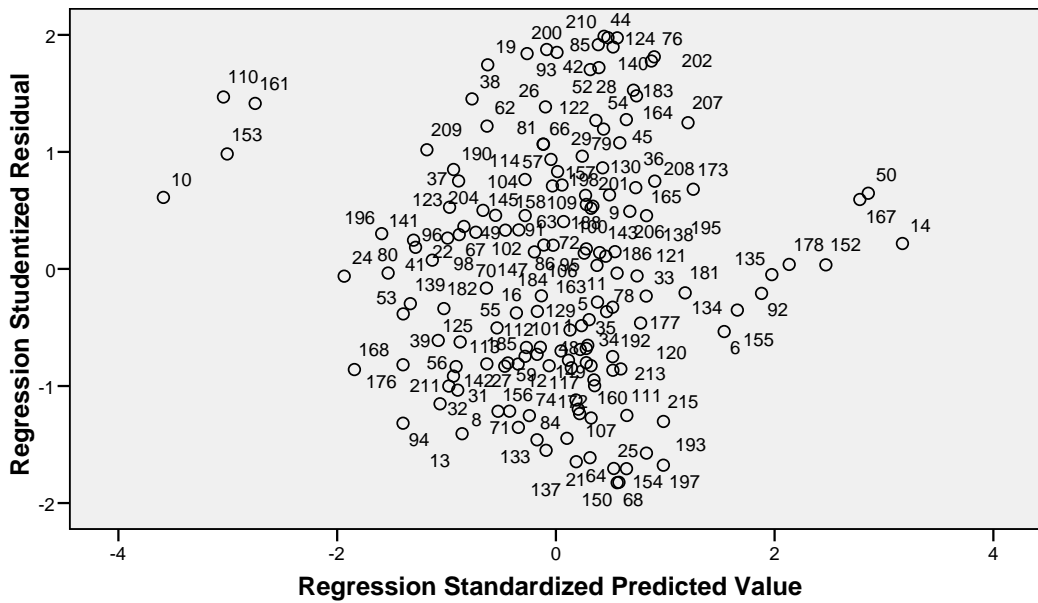
Normal P-P Plot of Regression Standardized Residual

Dependent Variable: LOGPER



Scatterplot

Dependent Variable: LOGPER



NPar Tests

One-Sample Kolmogorov-Smirnov Test

		Unstandardized Residual
N		157
Normal Parameters ^{a,b}	Mean	.0000000
	Std. Deviation	.22953706
Most Extreme Differences	Absolute	.070
	Positive	.070
	Negative	-.040
Kolmogorov-Smirnov Z		.876
Asymp. Sig. (2-tailed)		.427

a. Test distribution is Normal.

b. Calculated from data.

Regression (Uji Glejser)

Variables Entered/Removed^a

Model	Variables Entered	Variables Removed	Method
1	CSR, ROE, LDR, BOPO, NIM, ROA ^a	.	Enter

a. All requested variables entered.

b. Dependent Variable: ABS_RES7

Model Summary^b

Model	R	R Square	Adjusted R Square	Std. Error of the Estimate
1	.029 ^a	.009	.005	.12167

a. Predictors: (Constant), CSR, ROE, LDR, BOPO, NIM, ROA

b. Dependent Variable: ABS_RES7

ANOVA^b

Model		Sum of Squares	df	Mean Square	F	Sig.
1	Regression	.208	6	.035	1.343	.343 ^a
	Residual	2.221	150	.015		
	Total	2.429	156			

a. Predictors: (Constant), CSR, ROE, LDR, BOPO, NIM, ROA

b. Dependent Variable: ABS_RES7

Coefficients^a

Model		Unstandardized Coefficients		Standardized Coefficients	t	Sig.
		B	Std. Error	Beta		
1	(Constant)	.199	.052		3.860	.000
	ROA	.065	.035	.810	1.859	.065
	ROE	.000	.003	-.033	-.123	.902
	NIM	-.006	.003	-.810	-1.206	.089
	LDR	-.004	.002	-.144	-1.838	.068
	BOPO	.024	.028	.076	.861	.390
	CSR	.092	.073	.102	1.254	.212

a. Dependent Variable: ABS_RES7

Residuals Statistics^a

	Minimum	Maximum	Mean	Std. Deviation	N
Predicted Value	.0473	.2813	.1920	.03652	157
Residual	-.20464	.26621	.00000	.11931	157
Std. Predicted Value	-3.964	2.444	.000	1.000	157
Std. Residual	-1.682	2.188	.000	.981	157

a. Dependent Variable: ABS_RES7