

# LAMPIRAN

### Lampiran 1.1. Hasil Output ETABS V16 Gaya Yang Bekerja Pada Kolom

Story	Column	Unique Name	Load Case/Combo	Station	P	V2	V3	T	M2	M3	Element	Element Station
				m	kN	kN	kN	kN-m	kN-m	kN-m		m
Story4	C1	197	envelope Min	0	-284,059	-104,199	64,147	-1,7665	106,2847	-177,416	197	0
Story4	C1	197	envelope Min	1,75	-274,354	-104,199	64,147	-1,7665	-24,445	-19,19	197	1,75
Story4	C1	197	envelope Min	3,5	-264,649	-104,199	64,147	-1,7665	-247,899	38,4764	197	3,5
Story4	C2	204	envelope Min	0	-597,362	-196,497	-16,9974	-1,7665	-25,4148	-339,518	204	0
Story4	C2	204	envelope Min	1,75	-587,657	-196,497	-16,9974	-1,7665	-7,3277	-16,7181	204	1,75
Story4	C2	204	envelope Min	3,5	-577,952	-196,497	-16,9974	-1,7665	-107,758	127,4708	204	3,5
Story4	C3	205	envelope Min	0	-564,817	-195,429	-7,1127	-1,7665	-11,3351	-337,692	205	0
Story4	C3	205	envelope Min	1,75	-555,113	-195,429	-7,1127	-1,7665	-9,7935	-15,9375	205	1,75
Story4	C3	205	envelope Min	3,5	-545,408	-195,429	-7,1127	-1,7665	-116,599	130,52	205	3,5
Story4	C4	212	envelope Min	0	-597,362	-196,497	2,2036	-1,7665	1,6588	-339,518	212	0
Story4	C4	212	envelope Min	1,75	-587,657	-196,497	2,2036	-1,7665	-12,6422	-16,7181	212	1,75
Story4	C4	212	envelope Min	3,5	-577,952	-196,497	2,2036	-1,7665	-140,834	127,719	212	3,5
Story4	C5	213	envelope Min	0	-284,059	-104,199	-104,166	-1,7665	-177,405	-177,416	213	0
Story4	C5	213	envelope Min	1,75	-274,354	-104,199	-104,166	-1,7665	-16,8531	-19,19	213	1,75
Story4	C5	213	envelope Min	3,5	-264,649	-104,199	-104,166	-1,7665	32,441	37,2403	213	3,5
Story4	C11	238	envelope Min	0	-596,692	9,7971	-196,416	-1,7665	-339,476	13,754	238	0
Story4	C11	238	envelope Min	1,75	-586,987	9,7971	-196,416	-1,7665	-14,5651	-14,6948	238	1,75
Story4	C11	238	envelope Min	3,5	-577,283	9,7971	-196,416	-1,7665	122,9635	-163,65	238	3,5
Story4	C12	239	envelope Min	0	-1288,26	16,2794	11,4401	-1,7665	15,6503	23,4601	239	0
Story4	C12	239	envelope Min	1,75	-1278,55	16,2794	11,4401	-1,7665	-11,0367	-12,6936	239	1,75
Story4	C12	239	envelope Min	3,5	-1268,85	16,2794	11,4401	-1,7665	-155,018	-180,735	239	3,5
Story4	C13	240	envelope Min	0	-1223,9	17,4616	-4,6235	-1,7665	-7,5891	25,1827	240	0
Story4	C13	240	envelope Min	1,75	-1214,2	17,4616	-4,6235	-1,7665	-6,8132	-12,7237	240	1,75
Story4	C13	240	envelope Min	3,5	-1204,49	17,4616	-4,6235	-1,7665	-117,579	-177,347	240	3,5
Story4	C14	241	envelope Min	0	-1288,26	16,2794	-21,0823	-1,7665	-31,6076	23,4601	241	0
Story4	C14	241	envelope Min	1,75	-1278,55	16,2794	-21,0823	-1,7665	-3,1424	-12,6936	241	1,75
Story4	C14	241	envelope Min	3,5	-1268,85	16,2794	-21,0823	-1,7665	-100,626	-180,735	241	3,5
Story4	C15	242	envelope Min	0	-596,692	9,7971	121,3177	-1,7665	206,5533	13,754	242	0
Story4	C15	242	envelope Min	1,75	-586,987	9,7971	121,3177	-1,7665	-20,8921	-14,6948	242	1,75
Story4	C15	242	envelope Min	3,5	-577,283	9,7971	121,3177	-1,7665	-397,959	-163,65	242	3,5
Story4	C16	258	envelope Min	0	-568,346	-1,3556	-195,634	-1,7665	-337,966	-1,3456	258	0

Story4	C13	240	envelope Min	0	-1223,9	17,4616	-4,6235	-1,7665	-7,5891	25,1827	240	0
Story4	C13	240	envelope Min	1,75	-1214,2	17,4616	-4,6235	-1,7665	-6,8132	-12,7237	240	1,75
Story4	C13	240	envelope Min	3,5	-1204,49	17,4616	-4,6235	-1,7665	-117,579	-177,347	240	3,5
Story4	C14	241	envelope Min	0	-1288,26	16,2794	-21,0823	-1,7665	-31,6076	23,4601	241	0
Story4	C14	241	envelope Min	1,75	-1278,55	16,2794	-21,0823	-1,7665	-3,1424	-12,6936	241	1,75
Story4	C14	241	envelope Min	3,5	-1268,85	16,2794	-21,0823	-1,7665	-100,626	-180,735	241	3,5
Story4	C15	242	envelope Min	0	-596,692	9,7971	121,3177	-1,7665	206,5533	13,754	242	0
Story4	C15	242	envelope Min	1,75	-586,987	9,7971	121,3177	-1,7665	-20,8921	-14,6948	242	1,75
Story4	C15	242	envelope Min	3,5	-577,283	9,7971	121,3177	-1,7665	-397,959	-163,65	242	3,5
Story4	C16	258	envelope Min	0	-568,346	-1,3556	-195,634	-1,7665	-337,966	-1,3456	258	0
Story4	C16	258	envelope Min	1,75	-558,641	-1,3556	-195,634	-1,7665	-13,484	-10,8374	258	1,75
Story4	C16	258	envelope Min	3,5	-548,937	-1,3556	-195,634	-1,7665	126,6638	-135,458	258	3,5
Story4	C17	265	envelope Min	0	-1232,23	-2,1769	15,7757	-1,7665	22,6111	-2,2758	265	0
Story4	C17	265	envelope Min	1,75	-1222,52	-2,1769	15,7757	-1,7665	-10,976	-6,9297	265	1,75
Story4	C17	265	envelope Min	3,5	-1212,82	-2,1769	15,7757	-1,7665	-150,305	-137,31	265	3,5
Story4	C18	266	envelope Min	0	-1163,7	-2,4072	-1,549	-1,7665	-2,545	-2,5354	266	0
Story4	C18	266	envelope Min	1,75	-1154	-2,4072	-1,549	-1,7665	-6,4077	-6,4549	266	1,75
Story4	C18	266	envelope Min	3,5	-1144,29	-2,4072	-1,549	-1,7665	-110,789	-131,119	266	3,5
Story4	C19	273	envelope Min	0	-1232,23	-2,1769	-19,007	-1,7665	-27,9643	-2,2758	273	0
Story4	C19	273	envelope Min	1,75	-1222,52	-2,1769	-19,007	-1,7665	-2,5609	-6,9297	273	1,75
Story4	C19	273	envelope Min	3,5	-1212,82	-2,1769	-19,007	-1,7665	-92,171	-137,31	273	3,5
Story4	C20	274	envelope Min	0	-568,346	-1,3556	122,4286	-1,7665	207,4742	-1,3456	274	0
Story4	C20	274	envelope Min	1,75	-558,641	-1,3556	122,4286	-1,7665	-20,0576	-10,8374	274	1,75
Story4	C20	274	envelope Min	3,5	-548,937	-1,3556	122,4286	-1,7665	-392,119	-135,458	274	3,5
Story4	C21	278	envelope Min	0	-568,346	1,2298	-195,634	-1,7665	-337,966	1,2194	278	0
Story4	C21	278	envelope Min	1,75	-558,641	1,2298	-195,634	-1,7665	-13,4855	-12,7203	278	1,75
Story4	C21	278	envelope Min	3,5	-548,937	1,2298	-195,634	-1,7665	126,6873	-141,689	278	3,5
Story4	C22	285	envelope Min	0	-1232,23	1,9663	15,7708	-1,7665	22,6001	2,0543	285	0
Story4	C22	285	envelope Min	1,75	-1222,52	1,9663	15,7708	-1,7665	-10,9765	-9,7383	285	1,75
Story4	C22	285	envelope Min	3,5	-1212,82	1,9663	15,7708	-1,7665	-150,303	-147,092	285	3,5
Story4	C23	286	envelope Min	0	-1163,7	2,1724	-1,549	-1,7665	-2,545	2,2867	286	0
Story4	C23	286	envelope Min	1,75	-1154	2,1724	-1,549	-1,7665	-6,4077	-9,5255	286	1,75
Story4	C23	286	envelope Min	3,5	-1144,29	2,1724	-1,549	-1,7665	-110,789	-141,899	286	3,5

Story4	C24	293	envelope Min	0	-1232,23	1,9663	-19,0057	-1,7665	-27,9533	2,0543	293	0
Story4	C24	293	envelope Min	1,75	-1222,52	1,9663	-19,0057	-1,7665	-2,5604	-9,7383	293	1,75
Story4	C24	293	envelope Min	3,5	-1212,82	1,9663	-19,0057	-1,7665	-92,1724	-147,092	293	3,5
Story4	C25	294	envelope Min	0	-568,346	1,2298	122,4763	-1,7665	207,5629	1,2194	294	0
Story4	C25	294	envelope Min	1,75	-558,641	1,2298	122,4763	-1,7665	-20,056	-12,7203	294	1,75
Story4	C25	294	envelope Min	3,5	-548,937	1,2298	122,4763	-1,7665	-392,143	-141,689	294	3,5
Story4	C26	298	envelope Min	0	-596,692	-10,7951	120,7707	-1,7665	205,4519	-15,1672	298	0
Story4	C26	298	envelope Min	1,75	-586,987	-10,7951	120,7707	-1,7665	-20,9353	-7,8598	298	1,75
Story4	C26	298	envelope Min	3,5	-577,283	-10,7951	120,7707	-1,7665	-397,715	-122,179	298	3,5
Story4	C27	306	envelope Min	0	-1288,26	-18,0345	-21,0785	-1,7665	-31,6009	-26,0017	306	0
Story4	C27	306	envelope Min	1,75	-1278,55	-18,0345	-21,0785	-1,7665	-3,1424	-2,7041	306	1,75
Story4	C27	306	envelope Min	3,5	-1268,85	-18,0345	-21,0785	-1,7665	-100,627	-112,789	306	3,5
Story4	C28	307	envelope Min	0	-1223,9	-19,3587	-4,6235	-1,7665	-7,5891	-27,93	307	0
Story4	C28	307	envelope Min	1,75	-1214,2	-19,3587	-4,6235	-1,7665	-6,8132	-2,1437	307	1,75
Story4	C28	307	envelope Min	3,5	-1204,49	-19,3587	-4,6235	-1,7665	-117,579	-104,466	307	3,5
Story4	C29	314	envelope Min	0	-1288,26	-18,0345	11,4363	-1,7665	15,6437	-26,0017	314	0
Story4	C29	314	envelope Min	1,75	-1278,55	-18,0345	11,4363	-1,7665	-11,0367	-2,7042	314	1,75
Story4	C29	314	envelope Min	3,5	-1268,85	-18,0345	11,4363	-1,7665	-155,016	-112,789	314	3,5
Story4	C30	315	envelope Min	0	-596,692	-10,7951	-196,416	-1,7665	-339,476	-15,1672	315	0
Story4	C30	315	envelope Min	1,75	-586,987	-10,7951	-196,416	-1,7665	-14,5219	-7,8598	315	1,75
Story4	C30	315	envelope Min	3,5	-577,283	-10,7951	-196,416	-1,7665	122,7195	-122,179	315	3,5
Story4	C31	319	envelope Min	0	-287,63	64,3389	-104,166	-1,7665	-177,405	106,4485	319	0
Story4	C31	319	envelope Min	1,75	-277,925	64,3389	-104,166	-1,7665	-17,1144	-28,2337	319	1,75
Story4	C31	319	envelope Min	3,5	-268,22	64,3389	-104,166	-1,7665	33,6463	-262,796	319	3,5
Story4	C32	326	envelope Min	0	-597,362	121,7787	2,4648	-1,7665	2,1702	207,0469	326	0
Story4	C32	326	envelope Min	1,75	-587,657	121,7787	2,4648	-1,7665	-12,6297	-24,6914	326	1,75
Story4	C32	326	envelope Min	3,5	-577,952	121,7787	2,4648	-1,7665	-140,927	-414,381	326	3,5
Story4	C33	327	envelope Min	0	-564,817	122,9874	-7,1127	-1,7665	-11,3351	208,1377	327	0
Story4	C33	327	envelope Min	1,75	-555,113	122,9874	-7,1127	-1,7665	-9,7935	-23,8261	327	1,75
Story4	C33	327	envelope Min	3,5	-545,408	122,9874	-7,1127	-1,7665	-116,599	-408,809	327	3,5
Story4	C34	333	envelope Min	0	-597,362	121,2218	-17,2586	-1,7665	-25,9261	205,9248	333	0
Story4	C34	333	envelope Min	1,75	-587,657	121,2218	-17,2586	-1,7665	-7,3402	-24,6914	333	1,75
Story4	C34	333	envelope Min	3,5	-577,952	121,2218	-17,2586	-1,7665	-107,665	-414,381	333	3,5
Story4	C35	335	envelope Min	0	-288,187	67,201	66,9406	-1,7665	112,0447	112,3457	335	0

Story4	C35	335	envelope Min	1,75	-278,482	67,201	66,9406	-1,7665	-24,1837	-28,2337	335	1,75
Story4	C35	335	envelope Min	3,5	-268,778	67,201	66,9406	-1,7665	-249,104	-262,796	335	3,5
Story3	C1	198	envelope Min	0	-590,049	-65,8891	45,7488	-3	90,6711	-136,662	198	0
Story3	C1	198	envelope Min	1,75	-580,345	-65,8891	45,7488	-3	3,517	-30,1638	198	1,75
Story3	C1	198	envelope Min	3,5	-570,64	-65,8891	45,7488	-3	-208,436	-60,1349	198	3,5
Story3	C2	203	envelope Min	0	-1203,5	-129,378	-15,8785	-3	-30,8856	-266,507	203	0
Story3	C2	203	envelope Min	1,75	-1193,8	-129,378	-15,8785	-3	-3,0982	-43,5015	203	1,75
Story3	C2	203	envelope Min	3,5	-1184,09	-129,378	-15,8785	-3	-180,261	-10,9684	203	3,5
Story3	C3	206	envelope Min	0	-1158,58	-128,636	-12,2953	-3	-22,3222	-264,935	206	0
Story3	C3	206	envelope Min	1,75	-1148,88	-128,636	-12,2953	-3	-0,8055	-42,9707	206	1,75
Story3	C3	206	envelope Min	3,5	-1139,17	-128,636	-12,2953	-3	-178,591	-4,9176	206	3,5
Story3	C4	211	envelope Min	0	-1203,5	-129,378	-9,4111	-3	-15,2969	-266,507	211	0
Story3	C4	211	envelope Min	1,75	-1193,8	-129,378	-9,4111	-3	1,1725	-43,5015	211	1,75
Story3	C4	211	envelope Min	3,5	-1184,09	-129,378	-9,4111	-3	-186,285	-10,6707	211	3,5
Story3	C5	215	envelope Min	0	-589,696	-65,8891	-65,9062	-3	-136,676	-136,662	215	0
Story3	C5	215	envelope Min	1,75	-579,991	-65,8891	-65,9062	-3	-28,1376	-30,1638	215	1,75
Story3	C5	215	envelope Min	3,5	-570,286	-65,8891	-65,9062	-3	-68,566	-61,5448	215	3,5
Story3	C11	247	envelope Min	0	-1202,99	3,3159	-129,411	-3	-266,532	8,0565	247	0
Story3	C11	247	envelope Min	1,75	-1193,28	3,3159	-129,411	-3	-42,2364	2,2538	247	1,75
Story3	C11	247	envelope Min	3,5	-1183,58	3,3159	-129,411	-3	-17,3782	-220,92	247	3,5
Story3	C12	246	envelope Min	0	-2520,49	6,1655	-1,8752	-3	-0,3781	14,5394	246	0
Story3	C12	246	envelope Min	1,75	-2510,78	6,1655	-1,8752	-3	2,9036	3,7499	246	1,75
Story3	C12	246	envelope Min	3,5	-2501,08	6,1655	-1,8752	-3	-192,902	-231,806	246	3,5
Story3	C13	245	envelope Min	0	-2431,44	6,5857	-7,9556	-3	-14,6256	15,5028	245	0
Story3	C13	245	envelope Min	1,75	-2421,74	6,5857	-7,9556	-3	-0,7033	3,9777	245	1,75
Story3	C13	245	envelope Min	3,5	-2412,03	6,5857	-7,9556	-3	-180,807	-223,385	245	3,5
Story3	C14	244	envelope Min	0	-2520,49	6,1655	-14,5584	-3	-30,0158	14,5394	244	0
Story3	C14	244	envelope Min	1,75	-2510,78	6,1655	-14,5584	-3	-4,5386	3,7499	244	1,75
Story3	C14	244	envelope Min	3,5	-2501,08	6,1655	-14,5584	-3	-180,865	-231,806	244	3,5
Story3	C15	243	envelope Min	0	-1202,99	3,3159	88,9852	-3	178,0477	8,0565	243	0
Story3	C15	243	envelope Min	1,75	-1193,28	3,3159	88,9852	-3	17,7971	2,2538	243	1,75
Story3	C15	243	envelope Min	3,5	-1183,58	3,3159	88,9852	-3	-296,572	-220,92	243	3,5
Story3	C16	259	envelope Min	0	-1162,26	0,0509	-128,688	-3	-265,07	-0,2955	259	0

**Lampiran 1.2. Hasil Output ETABS V16 Gaya Yang Bekerja Pada Balok**

Story	Beam	Unique Name	Load Case/Combo	Station	P	V2	V3	T	M2	M3	Element	Element Station
				m	kN	kN	kN	kN-m	kN-m	kN-m		m
Story4	B1	1	envelope Min	0,25	0	-147,119	0	26,6297	0	-206,935	01-Jan	0,25
Story4	B1	1	envelope Min	0,6964	0	-145,228	0	26,6297	0	-141,679	01-Jan	0,6964
Story4	B1	1	envelope Min	1,1429	0	-143,337	0	26,6297	0	-77,2669	01-Jan	1,1429
Story4	B1	1	envelope Min	1,1429	0	-119,855	0	18,4315	0	-75,3119	02-Jan	0
Story4	B1	1	envelope Min	1,5238	0	-118,241	0	18,4315	0	-31,58	02-Jan	0,381
Story4	B1	1	envelope Min	1,9048	0	-116,627	0	18,4315	0	10,0198	02-Jan	0,7619
Story4	B1	1	envelope Min	2,2857	0	-115,013	0	18,4315	0	37,8124	02-Jan	1,1429
Story4	B1	1	envelope Min	2,2857	0	-72,6272	0	7,3273	0	38,4434	03-Jan	0
Story4	B1	1	envelope Min	2,6667	0	-71,0133	0	7,3273	0	53,5418	03-Jan	0,381
Story4	B1	1	envelope Min	3,0476	0	-69,3994	0	7,3273	0	68,1792	03-Jan	0,7619
Story4	B1	1	envelope Min	3,4286	0	-67,7855	0	7,3273	0	82,3554	03-Jan	1,1429
Story4	B1	1	envelope Min	3,4286	0	-18,0586	0	-11,2273	0	82,6174	04-Jan	0
Story4	B1	1	envelope Min	3,8095	0	-16,4447	0	-11,2273	0	84,5889	04-Jan	0,381
Story4	B1	1	envelope Min	4,1905	0	-14,8308	0	-11,2273	0	81,5785	04-Jan	0,7619
Story4	B1	1	envelope Min	4,5714	0	-13,2169	0	-11,2273	0	78,107	04-Jan	1,1429
Story4	B1	1	envelope Min	4,5714	0	24,4171	0	-39,7999	0	77,8348	05-Jan	0
Story4	B1	1	envelope Min	4,9524	0	25,6275	0	-39,7999	0	62,6812	05-Jan	0,381
Story4	B1	1	envelope Min	5,3333	0	26,8379	0	-39,7999	0	47,0665	05-Jan	0,7619
Story4	B1	1	envelope Min	5,7143	0	28,0483	0	-39,7999	0	30,9907	05-Jan	1,1429
Story4	B1	1	envelope Min	5,7143	0	54,4356	0	-65,4646	0	30,3391	06-Jan	0
Story4	B1	1	envelope Min	6,0952	0	55,646	0	-65,4646	0	3,3343	06-Jan	0,381
Story4	B1	1	envelope Min	6,4762	0	56,8564	0	-65,4646	0	-24,1316	06-Jan	0,7619
Story4	B1	1	envelope Min	6,8571	0	58,0668	0	-65,4646	0	-52,0586	06-Jan	1,1429
Story4	B1	1	envelope Min	6,8571	0	77,0668	0	-85,7665	0	-53,0622	07-Jan	0

Story4	B1	1	envelope Min	7,3036	0	78,4853	0	-85,7665	0	-113,579	07-Jan	0,4464
Story4	B1	1	envelope Min	7,75	0	79,9037	0	-85,7665	0	-176,129	07-Jan	0,8929
Story4	B2	2	envelope Min	0,25	0	-130,631	0	49,2218	0	-111,609	01-Feb	0,25
Story4	B2	2	envelope Min	0,6964	0	-128,739	0	49,2218	0	-53,7135	01-Feb	0,6964
Story4	B2	2	envelope Min	1,1429	0	-126,848	0	49,2218	0	2,8242	01-Feb	1,1429
Story4	B2	2	envelope Min	1,1429	0	-94,6717	0	38,3167	0	4,1527	02-Feb	0
Story4	B2	2	envelope Min	1,5238	0	-93,0578	0	38,3167	0	30,9129	02-Feb	0,381
Story4	B2	2	envelope Min	1,9048	0	-91,4439	0	38,3167	0	50,8179	02-Feb	0,7619
Story4	B2	2	envelope Min	2,2857	0	-89,83	0	38,3167	0	70,2617	02-Feb	1,1429
Story4	B2	2	envelope Min	2,2857	0	-43,5191	0	24,0807	0	70,7043	03-Feb	0
Story4	B2	2	envelope Min	2,6667	0	-41,9052	0	24,0807	0	79,5314	03-Feb	0,381
Story4	B2	2	envelope Min	3,0476	0	-40,2913	0	24,0807	0	87,8974	03-Feb	0,7619
Story4	B2	2	envelope Min	3,4286	0	-38,6774	0	24,0807	0	95,8023	03-Feb	1,1429
Story4	B2	2	envelope Min	3,4286	0	9,5105	0	6,5915	0	95,8617	04-Feb	0
Story4	B2	2	envelope Min	3,8095	0	10,7209	0	6,5915	0	92,0081	04-Feb	0,381
Story4	B2	2	envelope Min	4,1905	0	11,9313	0	6,5915	0	87,6934	04-Feb	0,7619
Story4	B2	2	envelope Min	4,5714	0	13,1417	0	6,5915	0	78,741	04-Feb	1,1429
Story4	B2	2	envelope Min	4,5714	0	42,2337	0	-17,3403	0	78,275	05-Feb	0
Story4	B2	2	envelope Min	4,9524	0	43,4441	0	-17,3403	0	56,8875	05-Feb	0,381
Story4	B2	2	envelope Min	5,3333	0	44,6545	0	-17,3403	0	35,0388	05-Feb	0,7619
Story4	B2	2	envelope Min	5,7143	0	45,8649	0	-17,3403	0	12,7291	05-Feb	1,1429
Story4	B2	2	envelope Min	5,7143	0	70,4921	0	-42,5022	0	11,8833	06-Feb	0
Story4	B2	2	envelope Min	6,0952	0	71,7025	0	-42,5022	0	-23,4846	06-Feb	0,381
Story4	B2	2	envelope Min	6,4762	0	72,9129	0	-42,5022	0	-72,8482	06-Feb	0,7619
Story4	B2	2	envelope Min	6,8571	0	74,1233	0	-42,5022	0	-122,827	06-Feb	1,1429
Story4	B2	2	envelope Min	6,8571	0	87,7971	0	-67,5128	0	-124,81	07-Feb	0
Story4	B2	2	envelope Min	7,3036	0	89,2156	0	-67,5128	0	-195,475	07-Feb	0,4464
Story4	B2	2	envelope Min	7,75	0	90,6341	0	-67,5128	0	-266,983	07-Feb	0,8929
Story4	B3	3	envelope Min	0,25	0	-128,519	0	38,7959	0	-186,666	01-Mar	0,25

Story4	B3	3	envelope Min	0,6964	0	-126,627	0	38,7959	0	-129,713	01-Mar	0,6964
Story4	B3	3	envelope Min	1,1429	0	-124,736	0	38,7959	0	-73,6055	01-Mar	1,1429
Story4	B3	3	envelope Min	1,1429	0	-103,457	0	27,6836	0	-71,809	02-Mar	0
Story4	B3	3	envelope Min	1,5238	0	-101,843	0	27,6836	0	-32,7042	02-Mar	0,381
Story4	B3	3	envelope Min	1,9048	0	-100,229	0	27,6836	0	5,5939	02-Mar	0,7619
Story4	B3	3	envelope Min	2,2857	0	-98,6154	0	27,6836	0	29,4523	02-Mar	1,1429
Story4	B3	3	envelope Min	2,2857	0	-57,6918	0	15,4467	0	29,9961	03-Mar	0
Story4	B3	3	envelope Min	2,6667	0	-56,0779	0	15,4467	0	42,182	03-Mar	0,381
Story4	B3	3	envelope Min	3,0476	0	-54,464	0	15,4467	0	53,9067	03-Mar	0,7619
Story4	B3	3	envelope Min	3,4286	0	-52,8501	0	15,4467	0	65,1703	03-Mar	1,1429
Story4	B3	3	envelope Min	3,4286	0	-4,6525	0	-0,2442	0	65,3429	04-Mar	0
Story4	B3	3	envelope Min	3,8095	0	-2,8195	0	-0,2442	0	65,4869	04-Mar	0,381
Story4	B3	3	envelope Min	4,1905	0	-1,2056	0	-0,2442	0	62,308	04-Mar	0,7619
Story4	B3	3	envelope Min	4,5714	0	0,4083	0	-0,2442	0	57,251	04-Mar	1,1429
Story4	B3	3	envelope Min	4,5714	0	30,7251	0	-25,4992	0	56,9356	05-Mar	0
Story4	B3	3	envelope Min	4,9524	0	31,9356	0	-25,4992	0	40,7155	05-Mar	0,381
Story4	B3	3	envelope Min	5,3333	0	33,146	0	-25,4992	0	24,0343	05-Mar	0,7619
Story4	B3	3	envelope Min	5,7143	0	34,3564	0	-25,4992	0	6,8921	05-Mar	1,1429
Story4	B3	3	envelope Min	5,7143	0	58,2175	0	-48,2523	0	6,2047	06-Mar	0
Story4	B3	3	envelope Min	6,0952	0	59,4279	0	-48,2523	0	-23,8831	06-Mar	0,381
Story4	B3	3	envelope Min	6,4762	0	60,6384	0	-48,2523	0	-64,9636	06-Mar	0,7619
Story4	B3	3	envelope Min	6,8571	0	61,8488	0	-48,2523	0	-106,659	06-Mar	1,1429
Story4	B3	3	envelope Min	6,8571	0	74,3641	0	-71,0143	0	-108,415	07-Mar	0
Story4	B3	3	envelope Min	7,3036	0	75,7825	0	-71,0143	0	-168,535	07-Mar	0,4464
Story4	B3	3	envelope Min	7,75	0	77,201	0	-71,0143	0	-229,5	07-Mar	0,8929
Story4	B4	4	envelope Min	0,25	0	-127,477	0	39,4698	0	-174,943	01-Apr	0,25
Story4	B4	4	envelope Min	0,6964	0	-125,585	0	39,4698	0	-118,456	01-Apr	0,6964
Story4	B4	4	envelope Min	1,1429	0	-123,694	0	39,4698	0	-62,8129	01-Apr	1,1429
Story4	B4	4	envelope Min	1,1429	0	-101,878	0	28,2116	0	-61,0443	02-Apr	0



Story4	B4	4	envelope Min	1,5238	0	-100,264	0	28,2116	0	-22,5411	02-Apr	0,381
Story4	B4	4	envelope Min	1,9048	0	-98,6502	0	28,2116	0	13,6302	02-Apr	0,7619
Story4	B4	4	envelope Min	2,2857	0	-97,0363	0	28,2116	0	34,8711	02-Apr	1,1429
Story4	B4	4	envelope Min	2,2857	0	-55,8475	0	15,7673	0	35,4032	03-Apr	0
Story4	B4	4	envelope Min	2,6667	0	-54,2337	0	15,7673	0	47,1696	03-Apr	0,381
Story4	B4	4	envelope Min	3,0476	0	-52,6198	0	15,7673	0	58,4749	03-Apr	0,7619
Story4	B4	4	envelope Min	3,4286	0	-51,0059	0	15,7673	0	69,319	03-Apr	1,1429
Story4	B4	4	envelope Min	3,4286	0	-2,8243	0	-0,1205	0	69,4784	04-Apr	0
Story4	B4	4	envelope Min	3,8095	0	-0,9414	0	-0,1205	0	69,1562	04-Apr	0,381
Story4	B4	4	envelope Min	4,1905	0	0,807	0	-0,1205	0	65,7546	04-Apr	0,7619
Story4	B4	4	envelope Min	4,5714	0	2,4208	0	-0,1205	0	60,154	04-Apr	1,1429
Story4	B4	4	envelope Min	4,5714	0	32,0452	0	-25,6438	0	59,822	05-Apr	0
Story4	B4	4	envelope Min	4,9524	0	33,2556	0	-25,6438	0	43,0366	05-Apr	0,381
Story4	B4	4	envelope Min	5,3333	0	34,466	0	-25,6438	0	25,7901	05-Apr	0,7619
Story4	B4	4	envelope Min	5,7143	0	35,6765	0	-25,6438	0	8,0824	05-Apr	1,1429
Story4	B4	4	envelope Min	5,7143	0	59,6226	0	-48,6934	0	7,3781	06-Apr	0
Story4	B4	4	envelope Min	6,0952	0	60,833	0	-48,6934	0	-22,9383	06-Apr	0,381
Story4	B4	4	envelope Min	6,4762	0	62,0434	0	-48,6934	0	-64,9208	06-Apr	0,7619
Story4	B4	4	envelope Min	6,8571	0	63,2538	0	-48,6934	0	-107,518	06-Apr	1,1429
Story4	B4	4	envelope Min	6,8571	0	75,8667	0	-71,1926	0	-109,296	07-Apr	0
Story4	B4	4	envelope Min	7,3036	0	77,2852	0	-71,1926	0	-170,573	07-Apr	0,4464
Story4	B4	4	envelope Min	7,75	0	78,7036	0	-71,1926	0	-232,694	07-Apr	0,8929
Story4	B5	5	envelope Min	0,25	0	-293,769	0	-14,8881	0	-397,343	01-Mei	0,25
Story4	B5	5	envelope Min	0,6964	0	-291,878	0	-14,8881	0	-266,618	01-Mei	0,6964
Story4	B5	5	envelope Min	1,1429	0	-289,987	0	-14,8881	0	-136,738	01-Mei	1,1429
Story4	B5	5	envelope Min	1,1429	0	-217,21	0	-7,072	0	-130,94	02-Mei	0
Story4	B5	5	envelope Min	1,5238	0	-215,596	0	-7,072	0	-48,501	02-Mei	0,381
Story4	B5	5	envelope Min	1,9048	0	-213,983	0	-7,072	0	24,7183	02-Mei	0,7619
Story4	B5	5	envelope Min	2,2857	0	-212,369	0	-7,072	0	70,7253	02-Mei	1,1429

Story4	B5	5	envelope Min	2,2857	0	-125,68	0	-2,1143	0	72,8436	03-Mei	0
Story4	B5	5	envelope Min	2,6667	0	-124,066	0	-2,1143	0	99,5615	03-Mei	0,381
Story4	B5	5	envelope Min	3,0476	0	-122,452	0	-2,1143	0	125,8184	03-Mei	0,7619
Story4	B5	5	envelope Min	3,4286	0	-120,838	0	-2,1143	0	151,6141	03-Mei	1,1429
Story4	B5	5	envelope Min	3,4286	0	-28,143	0	0,8555	0	152,5074	04-Mei	0
Story4	B5	5	envelope Min	3,8095	0	-26,5291	0	0,8555	0	155,8113	04-Mei	0,381
Story4	B5	5	envelope Min	4,1905	0	-24,9152	0	0,8555	0	156,2833	04-Mei	0,7619
Story4	B5	5	envelope Min	4,5714	0	-23,3013	0	0,8555	0	156,2942	04-Mei	1,1429
Story4	B5	5	envelope Min	4,5714	0	43,2358	0	1,5826	0	155,6919	05-Mei	0
Story4	B5	5	envelope Min	4,9524	0	44,4462	0	1,5826	0	134,6851	05-Mei	0,381
Story4	B5	5	envelope Min	5,3333	0	45,6567	0	1,5826	0	113,2171	05-Mei	0,7619
Story4	B5	5	envelope Min	5,7143	0	46,8671	0	1,5826	0	91,2881	05-Mei	1,1429
Story4	B5	5	envelope Min	5,7143	0	99,1688	0	1,9307	0	89,4399	06-Mei	0
Story4	B5	5	envelope Min	6,0952	0	100,3793	0	1,9307	0	46,5873	06-Mei	0,381
Story4	B5	5	envelope Min	6,4762	0	101,5897	0	1,9307	0	3,2736	06-Mei	0,7619
Story4	B5	5	envelope Min	6,8571	0	102,8001	0	1,9307	0	-40,5013	06-Mei	1,1429
Story4	B5	5	envelope Min	6,8571	0	152,7625	0	2,273	0	-43,3268	07-Mei	0
Story4	B5	5	envelope Min	7,3036	0	154,1809	0	2,273	0	-154,784	07-Mei	0,4464
Story4	B5	5	envelope Min	7,75	0	155,5994	0	2,273	0	-269,733	07-Mei	0,8929
Story4	B6	6	envelope Min	0,25	0	-287,688	0	-12,6769	0	-389,78	01-Jun	0,25
Story4	B6	6	envelope Min	0,6964	0	-285,797	0	-12,6769	0	-261,771	01-Jun	0,6964
Story4	B6	6	envelope Min	1,1429	0	-283,905	0	-12,6769	0	-134,605	01-Jun	1,1429
Story4	B6	6	envelope Min	1,1429	0	-213,839	0	-6,8589	0	-128,912	02-Jun	0
Story4	B6	6	envelope Min	1,5238	0	-212,226	0	-6,8589	0	-47,7569	02-Jun	0,381
Story4	B6	6	envelope Min	1,9048	0	-210,612	0	-6,8589	0	25,6862	02-Jun	0,7619
Story4	B6	6	envelope Min	2,2857	0	-208,998	0	-6,8589	0	70,5194	02-Jun	1,1429
Story4	B6	6	envelope Min	2,2857	0	-124,413	0	-3,149	0	72,5872	03-Jun	0
Story4	B6	6	envelope Min	2,6667	0	-122,799	0	-3,149	0	98,6919	03-Jun	0,381
Story4	B6	6	envelope Min	3,0476	0	-121,185	0	-3,149	0	124,3354	03-Jun	0,7619

Story4	B8	8	envelope Min	4,1905	0	-14,2657	0	-11,2113	0	82,6913	04-Agust	0,7619
Story4	B8	8	envelope Min	4,5714	0	-12,6518	0	-11,2113	0	79,6288	04-Agust	1,1429
Story4	B8	8	envelope Min	4,5714	0	25,0311	0	-39,7831	0	79,3679	05-Agust	0
Story4	B8	8	envelope Min	4,9524	0	26,2415	0	-39,7831	0	64,5474	05-Agust	0,381
Story4	B8	8	envelope Min	5,3333	0	27,4519	0	-39,7831	0	49,2658	05-Agust	0,7619
Story4	B8	8	envelope Min	5,7143	0	28,6624	0	-39,7831	0	33,523	05-Agust	1,1429
Story4	B8	8	envelope Min	5,7143	0	55,6275	0	-66,4783	0	32,8799	06-Agust	0
Story4	B8	8	envelope Min	6,0952	0	56,8379	0	-66,4783	0	6,1711	06-Agust	0,381
Story4	B8	8	envelope Min	6,4762	0	58,0483	0	-66,4783	0	-20,9987	06-Agust	0,7619
Story4	B8	8	envelope Min	6,8571	0	59,2587	0	-66,4783	0	-60,5065	06-Agust	1,1429
Story4	B8	8	envelope Min	6,8571	0	78,0062	0	-89,7913	0	-62,0343	07-Agust	0
Story4	B8	8	envelope Min	7,3036	0	79,4247	0	-89,7913	0	-125,522	07-Agust	0,4464
Story4	B8	8	envelope Min	7,75	0	80,8431	0	-89,7913	0	-189,854	07-Agust	0,8929
Story4	B9	9	envelope Min	0,25	0	-293,769	0	-11,968	0	-397,343	01-Sep	0,25
Story4	B9	9	envelope Min	0,6964	0	-291,878	0	-11,968	0	-266,618	01-Sep	0,6964
Story4	B9	9	envelope Min	1,1429	0	-289,987	0	-11,968	0	-136,738	01-Sep	1,1429
Story4	B9	9	envelope Min	1,1429	0	-217,21	0	-7,284	0	-130,94	02-Sep	0
Story4	B9	9	envelope Min	1,5238	0	-215,596	0	-7,284	0	-48,501	02-Sep	0,381
Story4	B9	9	envelope Min	1,9048	0	-213,983	0	-7,284	0	24,5827	02-Sep	0,7619
Story4	B9	9	envelope Min	2,2857	0	-212,369	0	-7,284	0	70,3804	02-Sep	1,1429
Story4	B9	9	envelope Min	2,2857	0	-125,68	0	-4,179	0	72,4896	03-Sep	0
Story4	B9	9	envelope Min	2,6667	0	-124,066	0	-4,179	0	99,103	03-Sep	0,381
Story4	B9	9	envelope Min	3,0476	0	-122,452	0	-4,179	0	125,2553	03-Sep	0,7619
Story4	B9	9	envelope Min	3,4286	0	-120,838	0	-4,179	0	150,9464	03-Sep	1,1429
Story4	B9	9	envelope Min	3,4286	0	-28,143	0	-1,8074	0	151,8364	04-Sep	0
Story4	B9	9	envelope Min	3,8095	0	-26,5291	0	-1,8074	0	155,6064	04-Sep	0,381
Story4	B9	9	envelope Min	4,1905	0	-24,9152	0	-1,8074	0	156,0748	04-Sep	0,7619
Story4	B9	9	envelope Min	4,5714	0	-23,3013	0	-1,8074	0	156,0822	04-Sep	1,1429
Story4	B9	9	envelope Min	4,5714	0	43,0305	0	-2,1013	0	155,4804	05-Sep	0
Story4	B9	9	envelope Min	4,9524	0	44,2409	0	-2,1013	0	134,497	05-Sep	0,381
Story4	B9	9	envelope Min	5,3333	0	45,4513	0	-2,1013	0	113,0526	05-Sep	0,7619
Story4	B9	9	envelope Min	5,7143	0	46,6618	0	-2,1013	0	91,147	05-Sep	1,1429
Story4	B9	9	envelope Min	5,7143	0	98,7058	0	-2,1397	0	89,3011	06-Sep	0

Story4	B9	9	envelope Min	6,0952	0	99,9162	0	-2,1397	0	46,5014	06-Sep	0,381
Story4	B9	9	envelope Min	6,4762	0	101,1267	0	-2,1397	0	3,2406	06-Sep	0,7619
Story4	B9	9	envelope Min	6,8571	0	102,3371	0	-2,1397	0	-40,4814	06-Sep	1,1429
Story4	B9	9	envelope Min	6,8571	0	151,953	0	-2,5058	0	-43,3031	07-Sep	0
Story4	B9	9	envelope Min	7,3036	0	153,3714	0	-2,5058	0	-154,652	07-Sep	0,4464
Story4	B9	9	envelope Min	7,75	0	154,7899	0	-2,5058	0	-269,493	07-Sep	0,8929
Story4	B10	10	envelope Min	0,25	0	-147,119	0	-68,9957	0	-206,935	01-Okt	0,25
Story4	B10	10	envelope Min	0,6964	0	-145,228	0	-68,9957	0	-141,679	01-Okt	0,6964
Story4	B10	10	envelope Min	1,1429	0	-143,337	0	-68,9957	0	-77,2669	01-Okt	1,1429
Story4	B10	10	envelope Min	1,1429	0	-119,855	0	-43,6913	0	-75,3119	02-Okt	0
Story4	B10	10	envelope Min	1,5238	0	-118,241	0	-43,6913	0	-32,2738	02-Okt	0,381
Story4	B10	10	envelope Min	1,9048	0	-116,627	0	-43,6913	0	10,0229	02-Okt	0,7619
Story4	B10	10	envelope Min	2,2857	0	-115,013	0	-43,6913	0	38,3509	02-Okt	1,1429
Story4	B10	10	envelope Min	2,2857	0	-72,6272	0	-18,3648	0	38,9979	03-Okt	0
Story4	B10	10	envelope Min	2,6667	0	-71,0133	0	-18,3648	0	54,4666	03-Okt	0,381
Story4	B10	10	envelope Min	3,0476	0	-69,3994	0	-18,3648	0	69,4742	03-Okt	0,7619
Story4	B10	10	envelope Min	3,4286	0	-67,7855	0	-18,3648	0	84,0206	03-Okt	1,1429
Story4	B10	10	envelope Min	3,4286	0	-18,3934	0	4,2281	0	84,2878	04-Okt	0
Story4	B10	10	envelope Min	3,8095	0	-16,7795	0	4,2281	0	85,1194	04-Okt	0,381
Story4	B10	10	envelope Min	4,1905	0	-15,1656	0	4,2281	0	82,1385	04-Okt	0,7619
Story4	B10	10	envelope Min	4,5714	0	-13,5517	0	4,2281	0	78,6964	04-Okt	1,1429
Story4	B10	10	envelope Min	4,5714	0	24,8923	0	21,4691	0	78,4244	05-Okt	0
Story4	B10	10	envelope Min	4,9524	0	26,1027	0	21,4691	0	63,2165	05-Okt	0,381
Story4	B10	10	envelope Min	5,3333	0	27,3131	0	21,4691	0	47,5475	05-Okt	0,7619
Story4	B10	10	envelope Min	5,7143	0	28,5236	0	21,4691	0	31,4173	05-Okt	1,1429
Story4	B10	10	envelope Min	5,7143	0	55,467	0	38,0685	0	30,7629	06-Okt	0
Story4	B10	10	envelope Min	6,0952	0	56,6774	0	38,0685	0	3,6402	06-Okt	0,381
Story4	B10	10	envelope Min	6,4762	0	57,8878	0	38,0685	0	-23,9436	06-Okt	0,7619
Story4	B10	10	envelope Min	6,8571	0	59,0982	0	38,0685	0	-51,9885	06-Okt	1,1429
Story4	B10	10	envelope Min	6,8571	0	77,8457	0	52,5977	0	-53,0134	07-Okt	0
Story4	B10	10	envelope Min	7,3036	0	79,2641	0	52,5977	0	-113,634	07-Okt	0,4464
Story4	B10	10	envelope Min	7,75	0	80,6826	0	52,5977	0	-176,289	07-Okt	0,8929
Story4	B11	11	envelope Min	0,25	0	-287,688	0	-13,2457	0	-389,78	01-Nop	0,25

Story4	B12	12	envelope Min	2,6667	0	-94,0699	0	-1,1166	0	84,8201	03-Des	0,381
Story4	B12	12	envelope Min	3,0476	0	-92,456	0	-1,1166	0	104,4708	03-Des	0,7619
Story4	B12	12	envelope Min	3,4286	0	-90,8421	0	-1,1166	0	123,6603	03-Des	1,1429
Story4	B12	12	envelope Min	3,4286	0	0,0025	0	-0,1445	0	124,1801	04-Des	0
Story4	B12	12	envelope Min	3,8095	0	1,8853	0	-0,1445	0	123,0478	04-Des	0,381
Story4	B12	12	envelope Min	4,1905	0	3,7682	0	-0,1445	0	120,4861	04-Des	0,7619
Story4	B12	12	envelope Min	4,5714	0	5,5503	0	-0,1445	0	115,2677	04-Des	1,1429
Story4	B12	12	envelope Min	4,5714	0	58,3223	0	-2,2173	0	114,3726	05-Des	0
Story4	B12	12	envelope Min	4,9524	0	59,5327	0	-2,2173	0	88,5846	05-Des	0,381
Story4	B12	12	envelope Min	5,3333	0	60,7431	0	-2,2173	0	62,3356	05-Des	0,7619
Story4	B12	12	envelope Min	5,7143	0	61,9535	0	-2,2173	0	35,6254	05-Des	1,1429
Story4	B12	12	envelope Min	5,7143	0	111,1046	0	-4,646	0	33,5005	06-Des	0
Story4	B12	12	envelope Min	6,0952	0	112,315	0	-4,646	0	-13,6055	06-Des	0,381
Story4	B12	12	envelope Min	6,4762	0	113,5254	0	-4,646	0	-86,1252	06-Des	0,7619
Story4	B12	12	envelope Min	6,8571	0	114,7359	0	-4,646	0	-159,26	06-Des	1,1429
Story4	B12	12	envelope Min	6,8571	0	155,9435	0	-8,7017	0	-164,379	07-Des	0
Story4	B12	12	envelope Min	7,3036	0	157,362	0	-8,7017	0	-282,383	07-Des	0,4464
Story4	B12	12	envelope Min	7,75	0	158,7804	0	-8,7017	0	-401,23	07-Des	0,8929
Story4	B13	13	envelope Min	0,25	0	-263,577	0	-3,7744	0	-348,217	13-1	0,25
Story4	B13	13	envelope Min	0,6964	0	-261,685	0	-3,7744	0	-230,971	13-1	0,6964
Story4	B13	13	envelope Min	1,1429	0	-259,794	0	-3,7744	0	-114,569	13-1	1,1429
Story4	B13	13	envelope Min	1,1429	0	-189,269	0	-2,2076	0	-109,382	13-2	0
Story4	B13	13	envelope Min	1,5238	0	-187,655	0	-2,2076	0	-37,5867	13-2	0,381
Story4	B13	13	envelope Min	1,9048	0	-186,041	0	-2,2076	0	25,0979	13-2	0,7619
Story4	B13	13	envelope Min	2,2857	0	-184,427	0	-2,2076	0	64,8336	13-2	1,1429
Story4	B13	13	envelope Min	2,2857	0	-98,8893	0	-1,1663	0	66,6021	13-3	0
Story4	B13	13	envelope Min	2,6667	0	-97,2754	0	-1,1663	0	87,4061	13-3	0,381
Story4	B13	13	envelope Min	3,0476	0	-95,6615	0	-1,1663	0	107,749	13-3	0,7619
Story4	B13	13	envelope Min	3,4286	0	-94,0476	0	-1,1663	0	127,6307	13-3	1,1429
Story4	B13	13	envelope Min	3,4286	0	-2,8243	0	-0,2085	0	128,1899	13-4	0
Story4	B13	13	envelope Min	3,8095	0	-0,9414	0	-0,2085	0	127,7303	13-4	0,381
Story4	B13	13	envelope Min	4,1905	0	0,807	0	-0,2085	0	125,4134	13-4	0,7619
Story4	B13	13	envelope Min	4,5714	0	2,4209	0	-0,2085	0	120,7987	13-4	1,1429

Story4	B14	14	envelope Min	6,8571	0	152,6507	0	-8,2926	0	-148,744	14-7	0
Story4	B14	14	envelope Min	7,3036	0	154,0692	0	-8,2926	0	-264,287	14-7	0,4464
Story4	B14	14	envelope Min	7,75	0	155,4876	0	-8,2926	0	-380,675	14-7	0,8929
Story4	B15	15	envelope Min	0,25	0	-258,824	0	-3,7477	0	-221,608	15-1	0,25
Story4	B15	15	envelope Min	0,6964	0	-256,933	0	-3,7477	0	-106,484	15-1	0,6964
Story4	B15	15	envelope Min	1,1429	0	-255,041	0	-3,7477	0	6,9677	15-1	1,1429
Story4	B15	15	envelope Min	1,1429	0	-170,432	0	-2,7876	0	10,8963	15-2	0
Story4	B15	15	envelope Min	1,5238	0	-168,818	0	-2,7876	0	53,2875	15-2	0,381
Story4	B15	15	envelope Min	1,9048	0	-167,204	0	-2,7876	0	89,1658	15-2	0,7619
Story4	B15	15	envelope Min	2,2857	0	-165,59	0	-2,7876	0	124,5831	15-2	1,1429
Story4	B15	15	envelope Min	2,2857	0	-75,1504	0	-2,3838	0	126,0393	15-3	0
Story4	B15	15	envelope Min	2,6667	0	-73,5365	0	-2,3838	0	141,4347	15-3	0,381
Story4	B15	15	envelope Min	3,0476	0	-71,9226	0	-2,3838	0	156,3689	15-3	0,7619
Story4	B15	15	envelope Min	3,4286	0	-70,3088	0	-2,3838	0	170,842	15-3	1,1429
Story4	B15	15	envelope Min	3,4286	0	15,924	0	-1,8123	0	171,073	15-4	0
Story4	B15	15	envelope Min	3,8095	0	17,1344	0	-1,8123	0	164,7762	15-4	0,381
Story4	B15	15	envelope Min	4,1905	0	18,3449	0	-1,8123	0	158,0182	15-4	0,7619
Story4	B15	15	envelope Min	4,5714	0	19,5553	0	-1,8123	0	148,6289	15-4	1,1429
Story4	B15	15	envelope Min	4,5714	0	72,5944	0	-3,5837	0	147,3878	15-5	0
Story4	B15	15	envelope Min	4,9524	0	73,8048	0	-3,5837	0	115,5107	15-5	0,381
Story4	B15	15	envelope Min	5,3333	0	75,0152	0	-3,5837	0	83,1724	15-5	0,7619
Story4	B15	15	envelope Min	5,7143	0	76,2256	0	-3,5837	0	50,3731	15-5	1,1429
Story4	B15	15	envelope Min	5,7143	0	126,2524	0	-6,0458	0	47,8907	15-6	0
Story4	B15	15	envelope Min	6,0952	0	127,4628	0	-6,0458	0	-5,0256	15-6	0,381
Story4	B15	15	envelope Min	6,4762	0	128,6732	0	-6,0458	0	-83,1413	15-6	0,7619
Story4	B15	15	envelope Min	6,8571	0	129,8836	0	-6,0458	0	-166,149	15-6	1,1429
Story4	B15	15	envelope Min	6,8571	0	173,0283	0	-10,2249	0	-171,809	15-7	0
Story4	B15	15	envelope Min	7,3036	0	174,4467	0	-10,2249	0	-302,753	15-7	0,4464
Story4	B15	15	envelope Min	7,75	0	175,8652	0	-10,2249	0	-434,54	15-7	0,8929
Story4	B16	16	envelope Min	0,25	0	-293,84	0	-2,2068	0	-397,067	16-1	0,25
Story4	B16	16	envelope Min	0,6964	0	-291,948	0	-2,2068	0	-266,31	16-1	0,6964
Story4	B16	16	envelope Min	1,1429	0	-290,057	0	-2,2068	0	-136,398	16-1	1,1429
Story4	B16	16	envelope Min	1,1429	0	-217,214	0	-0,2526	0	-130,601	16-2	0

Story4	B17	17	envelope Min	3,4286	0	-1,8892	0	-0,3118	0	66,1976	17-4	0
Story4	B17	17	envelope Min	3,8095	0	-0,2753	0	-0,3118	0	65,3969	17-4	0,381
Story4	B17	17	envelope Min	4,1905	0	1,3386	0	-0,3118	0	62,6391	17-4	0,7619
Story4	B17	17	envelope Min	4,5714	0	2,9525	0	-0,3118	0	56,2686	17-4	1,1429
Story4	B17	17	envelope Min	4,5714	0	32,5118	0	-24,9551	0	55,915	17-5	0
Story4	B17	17	envelope Min	4,9524	0	33,7222	0	-24,9551	0	38,4676	17-5	0,381
Story4	B17	17	envelope Min	5,3333	0	34,9327	0	-24,9551	0	20,5591	17-5	0,7619
Story4	B17	17	envelope Min	5,7143	0	36,1431	0	-24,9551	0	2,1895	17-5	1,1429
Story4	B17	17	envelope Min	5,7143	0	59,5259	0	-46,9406	0	1,4678	17-6	0
Story4	B17	17	envelope Min	6,0952	0	60,7363	0	-46,9406	0	-26,7128	17-6	0,381
Story4	B17	17	envelope Min	6,4762	0	61,9467	0	-46,9406	0	-66,3133	17-6	0,7619
Story4	B17	17	envelope Min	6,8571	0	63,1572	0	-46,9406	0	-108,333	17-6	1,1429
Story4	B17	17	envelope Min	6,8571	0	76,2354	0	-67,2829	0	-110,098	17-7	0
Story4	B17	17	envelope Min	7,3036	0	77,6539	0	-67,2829	0	-170,321	17-7	0,4464
Story4	B17	17	envelope Min	7,75	0	79,0723	0	-67,2829	0	-231,388	17-7	0,8929
Story4	B18	18	envelope Min	0,25	0	-259,236	0	-16,6934	0	-340,992	18-1	0,25
Story4	B18	18	envelope Min	0,6964	0	-257,345	0	-16,6934	0	-225,684	18-1	0,6964
Story4	B18	18	envelope Min	1,1429	0	-255,454	0	-16,6934	0	-111,22	18-1	1,1429
Story4	B18	18	envelope Min	1,1429	0	-185,328	0	-9,276	0	-106,118	18-2	0
Story4	B18	18	envelope Min	1,5238	0	-183,714	0	-9,276	0	-35,8241	18-2	0,381
Story4	B18	18	envelope Min	1,9048	0	-182,1	0	-9,276	0	25,0506	18-2	0,7619
Story4	B18	18	envelope Min	2,2857	0	-180,486	0	-9,276	0	64,1995	18-2	1,1429
Story4	B18	18	envelope Min	2,2857	0	-95,1299	0	-4,4715	0	65,9321	18-3	0
Story4	B18	18	envelope Min	2,6667	0	-93,516	0	-4,4715	0	86,0742	18-3	0,381
Story4	B18	18	envelope Min	3,0476	0	-91,9021	0	-4,4715	0	105,7552	18-3	0,7619
Story4	B18	18	envelope Min	3,4286	0	-90,2882	0	-4,4715	0	124,9751	18-3	1,1429
Story4	B18	18	envelope Min	3,4286	0	0,0904	0	-0,1313	0	125,4939	18-4	0
Story4	B18	18	envelope Min	3,8095	0	1,7043	0	-0,1313	0	124,2981	18-4	0,381
Story4	B18	18	envelope Min	4,1905	0	3,3182	0	-0,1313	0	121,1356	18-4	0,7619
Story4	B18	18	envelope Min	4,5714	0	4,9321	0	-0,1313	0	115,5406	18-4	1,1429
Story4	B18	18	envelope Min	4,5714	0	58,725	0	1,2772	0	114,6227	18-5	0
Story4	B18	18	envelope Min	4,9524	0	59,9354	0	1,2772	0	88,4258	18-5	0,381
Story4	B18	18	envelope Min	5,3333	0	61,1458	0	1,2772	0	61,7677	18-5	0,7619

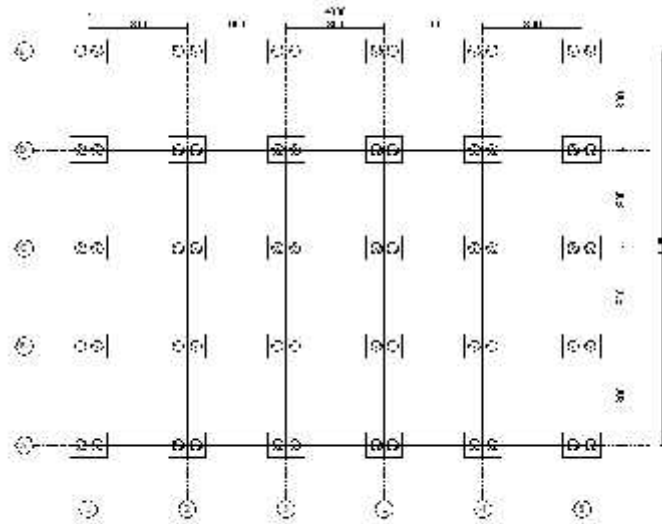
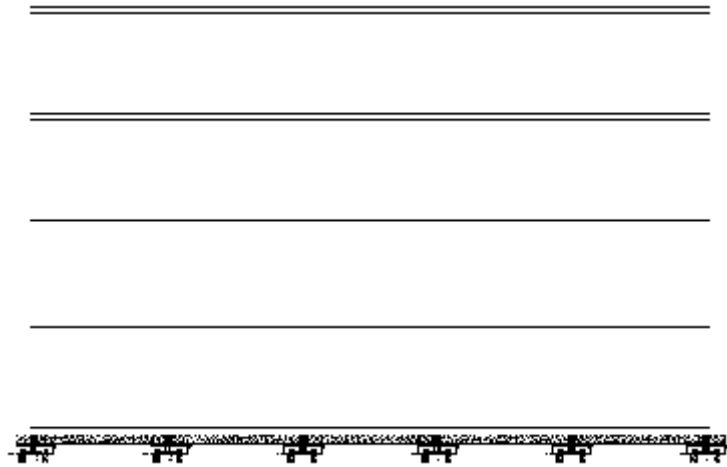
Story4	B21	21	envelope Min	2,2857	0	-95,1299	0	-2,4369	0	65,6011	21-3	0
Story4	B21	21	envelope Min	2,6667	0	-93,516	0	-2,4369	0	85,6469	21-3	0,381
Story4	B21	21	envelope Min	3,0476	0	-91,9021	0	-2,4369	0	105,2317	21-3	0,7619
Story4	B21	21	envelope Min	3,4286	0	-90,2882	0	-2,4369	0	124,3553	21-3	1,1429
Story4	B21	21	envelope Min	3,4286	0	0,0915	0	-0,3373	0	124,8713	21-4	0
Story4	B21	21	envelope Min	3,8095	0	1,7054	0	-0,3373	0	123,6752	21-4	0,381
Story4	B21	21	envelope Min	4,1905	0	3,3193	0	-0,3373	0	120,9486	21-4	0,7619
Story4	B21	21	envelope Min	4,5714	0	4,9332	0	-0,3373	0	115,3535	21-4	1,1429
Story4	B21	21	envelope Min	4,5714	0	58,4735	0	-1,4207	0	114,4365	21-5	0
Story4	B21	21	envelope Min	4,9524	0	59,6839	0	-1,4207	0	88,2683	21-5	0,381
Story4	B21	21	envelope Min	5,3333	0	60,8943	0	-1,4207	0	61,639	21-5	0,7619
Story4	B21	21	envelope Min	5,7143	0	62,1047	0	-1,4207	0	34,5485	21-5	1,1429
Story4	B21	21	envelope Min	5,7143	0	111,2252	0	-2,7806	0	32,4012	21-6	0
Story4	B21	21	envelope Min	6,0952	0	112,4356	0	-2,7806	0	-14,5177	21-6	0,381
Story4	B21	21	envelope Min	6,4762	0	113,646	0	-2,7806	0	-80,0665	21-6	0,7619
Story4	B21	21	envelope Min	6,8571	0	114,8565	0	-2,7806	0	-152,259	21-6	1,1429
Story4	B21	21	envelope Min	6,8571	0	155,9986	0	-4,605	0	-157,337	21-7	0
Story4	B21	21	envelope Min	7,3036	0	157,4171	0	-4,605	0	-273,678	21-7	0,4464
Story4	B21	21	envelope Min	7,75	0	158,8355	0	-4,605	0	-390,863	21-7	0,8929
Story4	B22	22	envelope Min	0,25	0	-124,82	0	-72,7313	0	-170,346	22-1	0,25
Story4	B22	22	envelope Min	0,6964	0	-122,929	0	-72,7313	0	-115,045	22-1	0,6964
Story4	B22	22	envelope Min	1,1429	0	-121,038	0	-72,7313	0	-61,3351	22-1	1,1429
Story4	B22	22	envelope Min	1,1429	0	-99,3423	0	-49,8655	0	-59,6668	22-2	0
Story4	B22	22	envelope Min	1,5238	0	-97,7284	0	-49,8655	0	-24,1236	22-2	0,381
Story4	B22	22	envelope Min	1,9048	0	-96,1145	0	-49,8655	0	10,8048	22-2	0,7619
Story4	B22	22	envelope Min	2,2857	0	-94,5007	0	-49,8655	0	34,3349	22-2	1,1429
Story4	B22	22	envelope Min	2,2857	0	-53,3873	0	-26,5987	0	34,8518	22-3	0
Story4	B22	22	envelope Min	2,6667	0	-51,7734	0	-26,5987	0	46,1127	22-3	0,381
Story4	B22	22	envelope Min	3,0476	0	-50,1595	0	-26,5987	0	56,9124	22-3	0,7619
Story4	B22	22	envelope Min	3,4286	0	-48,5456	0	-26,5987	0	67,251	22-3	1,1429
Story4	B22	22	envelope Min	3,4286	0	-1,8638	0	-2,198	0	67,3955	22-4	0
Story4	B22	22	envelope Min	3,8095	0	-0,2499	0	-2,198	0	66,5873	22-4	0,381
Story4	B22	22	envelope Min	4,1905	0	1,364	0	-2,198	0	62,994	22-4	0,7619



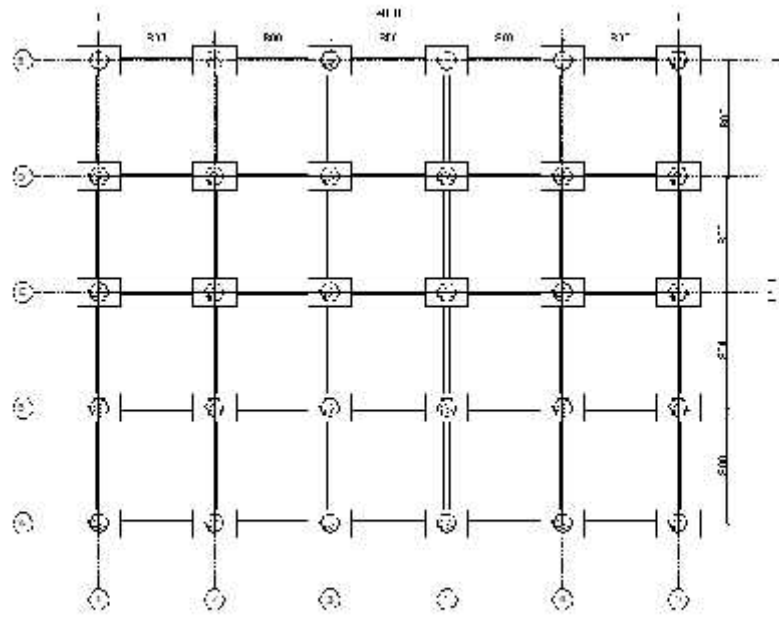
Story4	B23	23	envelope Min	6,4762	0	100,9905	0	-7,03	0	8,1581	23-6	0,7619
Story4	B23	23	envelope Min	6,8571	0	102,201	0	-7,03	0	-42,3887	23-6	1,1429
Story4	B23	23	envelope Min	6,8571	0	151,8696	0	-12,66	0	-46,6366	23-7	0
Story4	B23	23	envelope Min	7,3036	0	153,288	0	-12,66	0	-160,734	23-7	0,4464
Story4	B23	23	envelope Min	7,75	0	154,7065	0	-12,66	0	-275,676	23-7	0,8929
Story4	B24	24	envelope Min	0,25	0	-293,84	0	0,6709	0	-397,067	24-1	0,25
Story4	B24	24	envelope Min	0,6964	0	-291,948	0	0,6709	0	-266,31	24-1	0,6964
Story4	B24	24	envelope Min	1,1429	0	-290,057	0	0,6709	0	-136,398	24-1	1,1429
Story4	B24	24	envelope Min	1,1429	0	-217,214	0	-0,4588	0	-130,601	24-2	0
Story4	B24	24	envelope Min	1,5238	0	-215,6	0	-0,4588	0	-48,1601	24-2	0,381
Story4	B24	24	envelope Min	1,9048	0	-213,986	0	-0,4588	0	25,2424	24-2	0,7619
Story4	B24	24	envelope Min	2,2857	0	-212,372	0	-0,4588	0	71,1709	24-2	1,1429
Story4	B24	24	envelope Min	2,2857	0	-125,641	0	-1,1213	0	73,2847	24-3	0
Story4	B24	24	envelope Min	2,6667	0	-124,027	0	-1,1213	0	99,9256	24-3	0,381
Story4	B24	24	envelope Min	3,0476	0	-122,413	0	-1,1213	0	126,1054	24-3	0,7619
Story4	B24	24	envelope Min	3,4286	0	-120,799	0	-1,1213	0	151,8241	24-3	1,1429
Story4	B24	24	envelope Min	3,4286	0	-28,0722	0	-2,0784	0	152,7128	24-4	0
Story4	B24	24	envelope Min	3,8095	0	-26,4583	0	-2,0784	0	156,1062	24-4	0,381
Story4	B24	24	envelope Min	4,1905	0	-24,8444	0	-2,0784	0	156,8684	24-4	0,7619
Story4	B24	24	envelope Min	4,5714	0	-23,2305	0	-2,0784	0	157,1694	24-4	1,1429
Story4	B24	24	envelope Min	4,5714	0	43,4649	0	-5,4719	0	156,5839	24-5	0
Story4	B24	24	envelope Min	4,9524	0	44,6753	0	-5,4719	0	135,8697	24-5	0,381
Story4	B24	24	envelope Min	5,3333	0	45,8857	0	-5,4719	0	114,6945	24-5	0,7619
Story4	B24	24	envelope Min	5,7143	0	47,0961	0	-5,4719	0	93,0581	24-5	1,1429
Story4	B24	24	envelope Min	5,7143	0	99,4329	0	-9,1649	0	91,2272	24-6	0
Story4	B24	24	envelope Min	6,0952	0	100,6433	0	-9,1649	0	48,7012	24-6	0,381
Story4	B24	24	envelope Min	6,4762	0	101,8537	0	-9,1649	0	5,7141	24-6	0,7619
Story4	B24	24	envelope Min	6,8571	0	103,0641	0	-9,1649	0	-46,1894	24-6	1,1429
Story4	B24	24	envelope Min	6,8571	0	153,1077	0	-15,3142	0	-50,5247	24-7	0
Story4	B24	24	envelope Min	7,3036	0	154,5262	0	-15,3142	0	-166,576	24-7	0,4464
Story4	B24	24	envelope Min	7,75	0	155,9447	0	-15,3142	0	-283,471	24-7	0,8929
Story4	B25	25	envelope Min	0,25	0	-147,076	0	-62,9871	0	-206,634	25-1	0,25
Story4	B25	25	envelope Min	0,6964	0	-145,184	0	-62,9871	0	-141,397	25-1	0,6964

Story4	B25	25	envelope Min	1,1429	0	-143,293	0	-62,9871	0	-77,0046	25-1	1,1429
Story4	B25	25	envelope Min	1,1429	0	-119,804	0	-40,921	0	-75,0505	25-2	0
Story4	B25	25	envelope Min	1,5238	0	-118,19	0	-40,921	0	-29,7182	25-2	0,381
Story4	B25	25	envelope Min	1,9048	0	-116,576	0	-40,921	0	13,4413	25-2	0,7619
Story4	B25	25	envelope Min	2,2857	0	-114,962	0	-40,921	0	38,0728	25-2	1,1429
Story4	B25	25	envelope Min	2,2857	0	-72,5751	0	-17,0255	0	38,7025	25-3	0
Story4	B25	25	envelope Min	2,6667	0	-70,9612	0	-17,0255	0	53,7566	25-3	0,381
Story4	B25	25	envelope Min	3,0476	0	-69,3473	0	-17,0255	0	68,3496	25-3	0,7619
Story4	B25	25	envelope Min	3,4286	0	-67,7334	0	-17,0255	0	82,4815	25-3	1,1429
Story4	B25	25	envelope Min	3,4286	0	-17,4934	0	4,2172	0	82,7421	25-4	0
Story4	B25	25	envelope Min	3,8095	0	-15,8795	0	4,2172	0	84,7483	25-4	0,381
Story4	B25	25	envelope Min	4,1905	0	-14,2657	0	4,2172	0	82,1167	25-4	0,7619
Story4	B25	25	envelope Min	4,5714	0	-12,6518	0	4,2172	0	79,0241	25-4	1,1429
Story4	B25	25	envelope Min	4,5714	0	24,5442	0	18,6528	0	78,763	25-5	0
Story4	B25	25	envelope Min	4,9524	0	25,7547	0	18,6528	0	63,9981	25-5	0,381
Story4	B25	25	envelope Min	5,3333	0	26,9651	0	18,6528	0	48,7721	25-5	0,7619
Story4	B25	25	envelope Min	5,7143	0	28,1755	0	18,6528	0	33,085	25-5	1,1429
Story4	B25	25	envelope Min	5,7143	0	54,5704	0	30,5557	0	32,4448	25-6	0
Story4	B25	25	envelope Min	6,0952	0	55,7809	0	30,5557	0	5,8569	25-6	0,381
Story4	B25	25	envelope Min	6,4762	0	56,9913	0	30,5557	0	-21,1922	25-6	0,7619
Story4	B25	25	envelope Min	6,8571	0	58,2017	0	30,5557	0	-60,5065	25-6	1,1429
Story4	B25	25	envelope Min	6,8571	0	77,2087	0	38,6407	0	-62,0343	25-7	0
Story4	B25	25	envelope Min	7,3036	0	78,6271	0	38,6407	0	-125,522	25-7	0,4464
Story4	B25	25	envelope Min	7,75	0	80,0456	0	38,6407	0	-189,854	25-7	0,8929
Story4	B26	26	envelope Min	0,25	0	-130,575	0	-91,3552	0	-111,622	26-1	0,25
Story4	B26	26	envelope Min	0,6964	0	-128,684	0	-91,3552	0	-56,9909	26-1	0,6964
Story4	B26	26	envelope Min	1,1429	0	-126,792	0	-91,3552	0	-3,2041	26-1	1,1429
Story4	B26	26	envelope Min	1,1429	0	-94,6202	0	-67,7326	0	-1,8065	26-2	0
Story4	B26	26	envelope Min	1,5238	0	-93,0063	0	-67,7326	0	30,6664	26-2	0,381
Story4	B26	26	envelope Min	1,9048	0	-91,3924	0	-67,7326	0	50,5998	26-2	0,7619
Story4	B26	26	envelope Min	2,2857	0	-89,7785	0	-67,7326	0	70,0721	26-2	1,1429
Story4	B26	26	envelope Min	2,2857	0	-43,4681	0	-40,5626	0	70,5155	26-3	0
Story4	B26	26	envelope Min	2,6667	0	-41,8542	0	-40,5626	0	79,3684	26-3	0,381

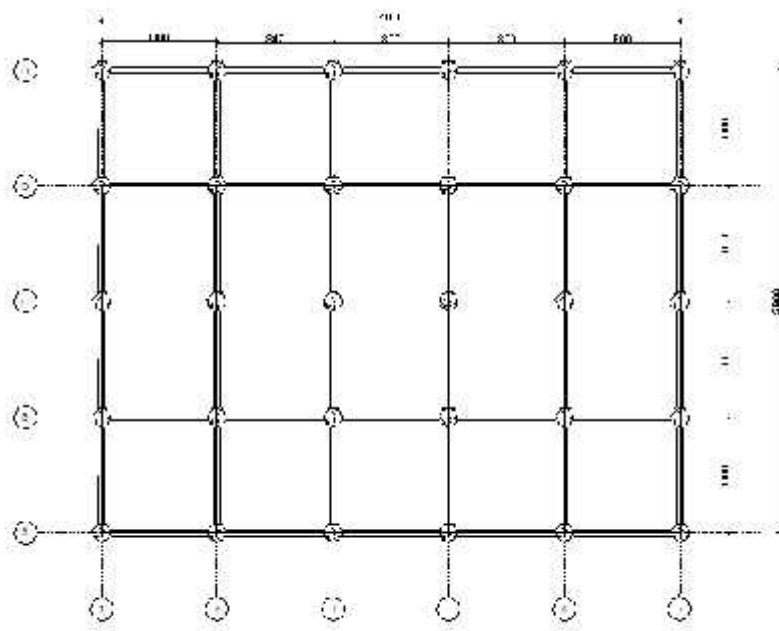
**Lampiran 1.3. Gambar Desain Struktur**



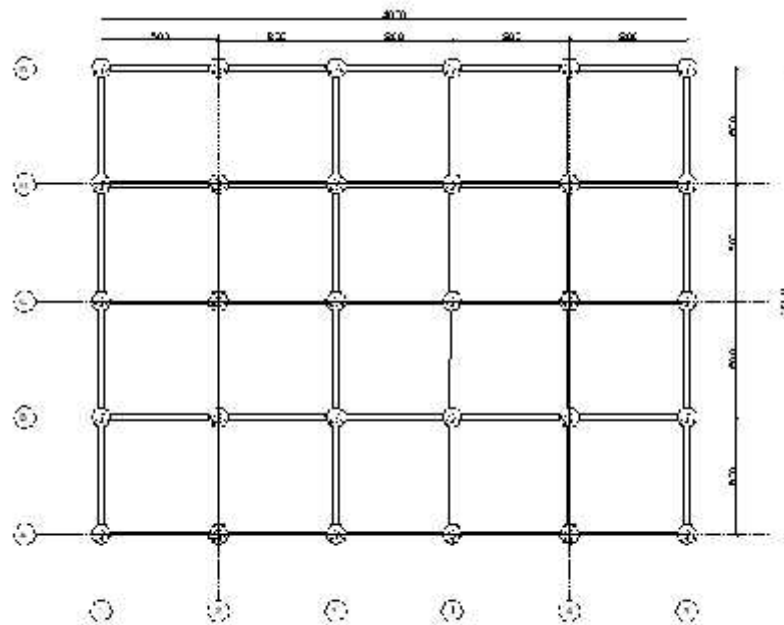
**DENAH PONDASI**  
**SKALA 1 : 100**



**DENAH KOLOM DAN BALOK LANTAI 1**  
**SKALA 1 : 100**

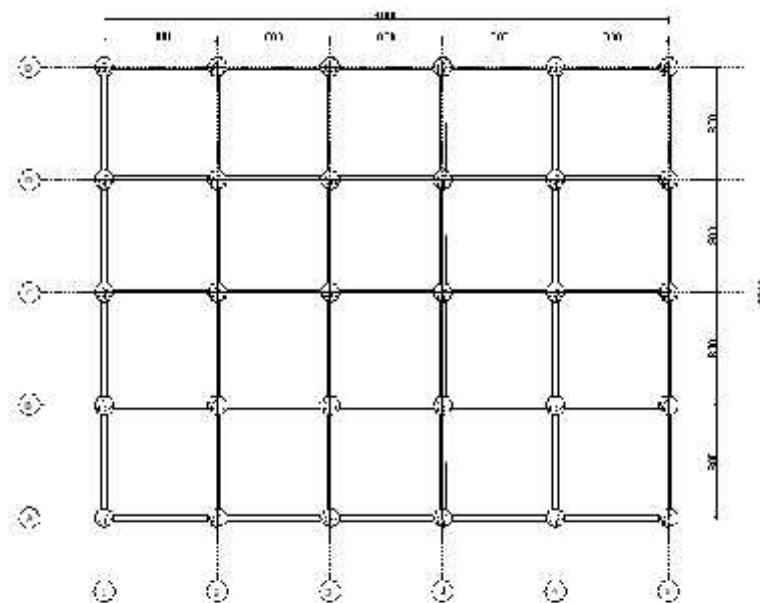


**DENAH KOLOM DAN BALOK LANTAI 2**  
**SKALA 1 : 100**



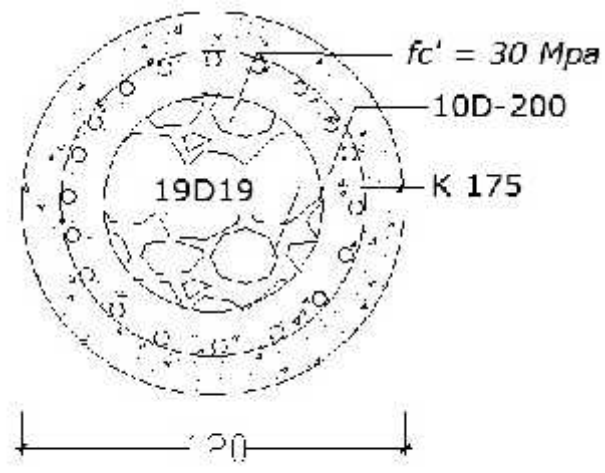
**DENAH KOLOM DAN BALOK LANTAI 3**

SKALA 1 : 100

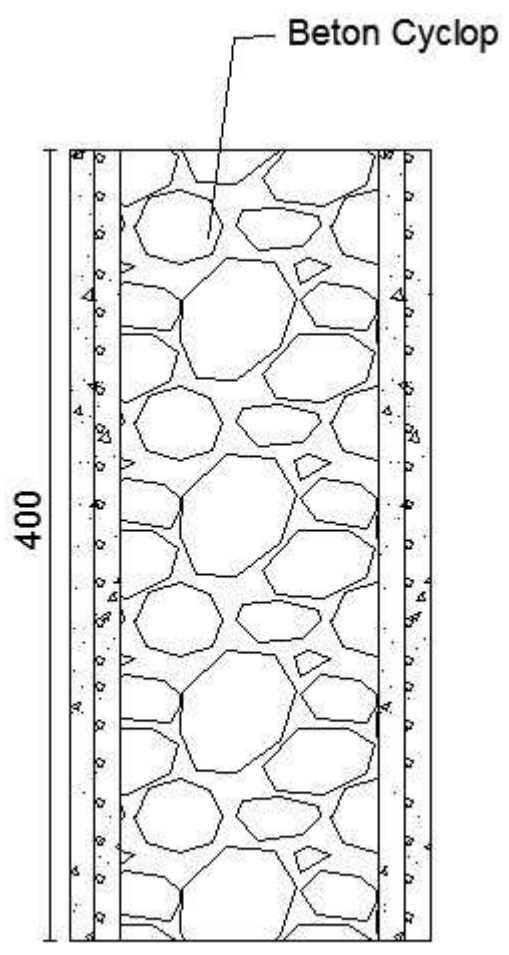


**DENAH KOLOM DAN BALOK LANTAI 4**

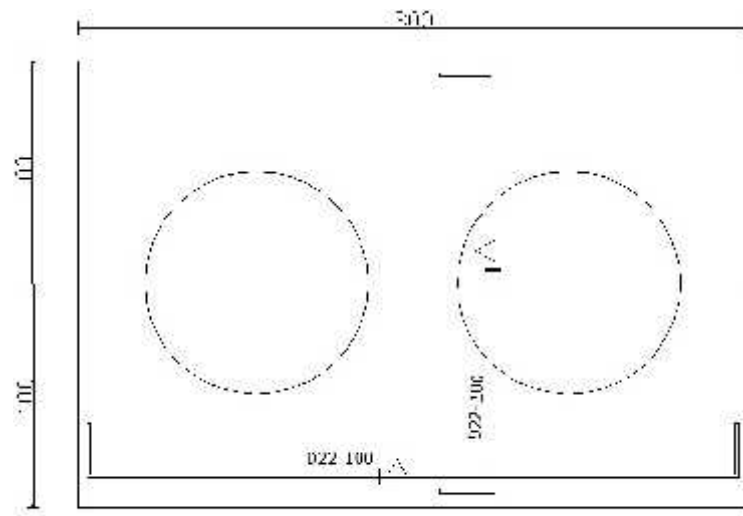
SKALA 1 : 100



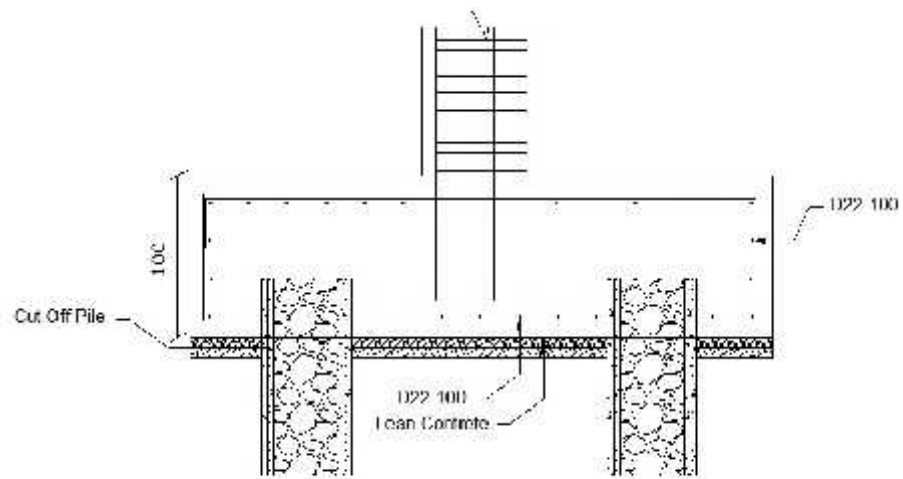
**Tampak Atas Pondasi**  
**Skala 1 : 100**



**Penampang Pondasi**  
**Skala 1 : 100**



**Tampak Atas Pile Cap**  
**Skala 1 : 100**





**Penampang Pondasi dan Pile Cap**  
**Skala 1 : 100**


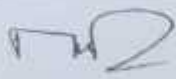

**DOSEN PENGUJI  
 SEMINAR TUGAS AKHIR**

Kamis  
 27 Agustus 2020  
 09.00 WIB

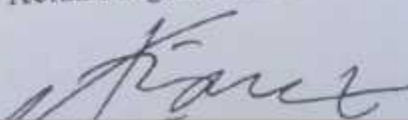
Judul Tugas Akhir

Struktur Gedung Menggunakan Tulangan GFRP ( Glass Fiber Reinforced Poliymer )

Shabri Helmi Bachtiar	30201604501	1	
Ahmad Ibrahim	30201604357	2	

NAMA	TANDA TANGAN		
Prof. Dr. Ir. Antonius, MT	1		
Dra. Hj. Nafiah, Msi		2	
Dr. H. Djoko Susilo Adhy, MT	3		

Semarang, 27 Agustus 2020  
 Ketua Program Studi Teknik Sipil







SEMINAR TUGAS AKHIR

Nama Mahasiswa / NIM : Ahmad Ibrahim / 3020604357 Shabihelmi B / 3020601501  
 Hari / Tanggal : Kamis / 27 Agustus 2020  
 Judul TA : Desain struktur Gedung Maggiran Tulangan  
 GFPP (Glass Fiber Reinforced Polymer)

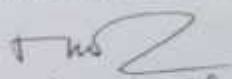
Perbaiki kalimat pd permasalahan & tujuan

Judul diben Studi Kasus . . . .

Judul tabel 4.1 s7a tabel 4.5 tolong dikoreksi

Kesimpulan tolong diperbaiki terutama (a)

DOSEN PENGUJI

  
 (Hafid)



SEMINAR TUGAS AKHIR

Nama Mahasiswa / NIM : Ahmad Ibrahim / 30201604357    Shabrina Helmi Badhter / 30201604501  
 Hari / Tanggal : Kamis / 27 Agustus 2020  
 Judul / TA : Desain Struktur Gedung Menggunakan Tulang-tiang  
 GFRP (Glass Fiber Reinforced Polymer)

Perbaiki formulis awal nya

Perbaiki gambar 2 nya

Perbaiki kesimpulan dan saran

*(Handwritten signature)*  
 Diko SR

DOSEN PENGUJI

*(Handwritten signature of the lecturer)*

Dr. H. Dato Subito Adhy, MT



YAYASAN BADAN WAKAF SULTAN AGUNG  
UNIVERSITAS ISLAM SULTAN AGUNG (UNISSULA)

Jl. Raya Kaligawe Km. 4 Semarang 50112 Telp. (024) 8583584 (8 Sal) Fax (024) 8582455  
email: informasi@unissula.ac.id web: www.unissula.ac.id

FAKULTAS TEKNIK

Bersama Membangun Generasi Khalifa Ummah

JUDUL TUGAS AKHIR  
DALAM BAHASA INGGRIS

Hari  
tanggal  
jam

Kamis  
27 Agustus 2020  
09.00 WIB

Judul Tugas Akhir

Desain Struktur Gedung Menggunakan Tulangan GFRP ( Glass Fiber Reinforced Polymer )

JUDUL TUGAS AKHIR DALAM BAHASA INGGRIS

Building Structure Design Using GFRP BONE  
( Glass Fiber Reinforced Polymer )

1	Shabri Helmi Baethiar	30201604501	1	
2	Ahmad Ibrahim	30201604357	2	

Pembimbing Tugas Akhir

	NAMA	TANDA TANGAN	
1	Prof. Dr. Ir. Antonius, MT	1	
2	Dra. Hj. Nafiah, Msi		2



Nomor : 23 / A.2 / SA - T / VIII / 2020

Kamis Tanggal 27 Agustus 2020 telah dilaksanakan  
 Tugas Akhir, dengan peserta sebagai berikut :

Shabri Helmi Bachtiar	30201604501
Ahmad Ibrahim	30201604357

Desain Struktur Gedung Menggunakan Tulangan GFRP ( Glass Fiber Reinforced Poliymer )

0  
0

.....  
 : *farbaki huda karahsi*  
 : .....  
 : .....

Agenda Acara Seminar Tugas Akhir ini dibuat untuk diketahui dan penggunaan seperlunya.

Pembimbing I

.....  
 Antonius, MT

Dosen Pembimbing II

*[Signature]*  
 Dra. Hj. Nafiah, Msi

Dosen Pembimbing

*[Signature]*  
 Ir. H. Djoko Susilo Adhy, MT

Mengetahui,  
 Ketua Program Studi Teknik Sipil

*[Signature]*  
 Ari Sentani, ST, MSc



SEMINAR TUGAS AKHIR  
MAHASISWA FAKULTAS TEKNIK  
UNIVERSITAS ISLAM SULTAN AGUNG SEMARANG

Hari

Tanggal

Tempat

: Kamis  
: 27 Agustus 2020  
: Ruang 6 I I

NAMA	NIM	TANDA TANGAN
M. Fadli Mublis		1
Afiq Rottam		2
Andre Restu		3
Nurhidayat		4
Apryan B. P		5
Khasid Mublis		6
	7	
	8	
	9	
	10	
	11	
	12	
	13	
	14	
	15	
	16	
	17	
	18	
	19	

# LEMBAR ASISTENSI



NAMA : Ahmad Ibrohim (30201604357)

: Shabri Helmi Bachtiar (30201604501)

TUGAS : Tugas Akhir

DOSEN 1 : Prof. Dr. Ir. Antonius, MT

No	Tanggal	Keterangan	Paraf
1.	06 April 2020	- Cari proyek Gedung - Buat pemodelan Etaps - Pelajari Konsep SNI GFAP	
2.	17 Mei 2020	- Perhitungan pembebanan Respon spektrum - Cek Hasil Analisis	
3.	18 Mei 2020	- Cek Perhitungan Manual - Cek Hasil Input dan Run - Cek Mulus Getarannya Mode 1 dan 2 transien - Susun urutan TA, dari Dab I sampai pap selanjutnya	
4.	16 Juni 2020	- Buat Tabel Gaya Momen Tiap Batang - Lanjut Desain penulangan - Beri keterangan sumber dan rumus Gambar dan Tabel	
5.	14 Juli	- Lanjut perhitungan Manual Desain penulangan Kolom piast - Buat Gambar Sketsa Trap Penampang Balok dan Kolom	

# LEMBAR ASISTENSI

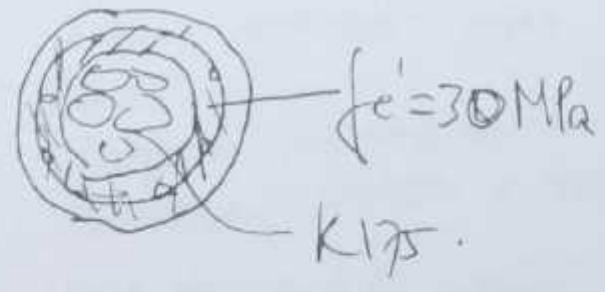


NAMA : Ahmad Ibrohim (30201604357)  
 : Shabri Helmi Bachtiar (30201604501)

TUGAS : Tugas Akhir

DOSEN I : Prof. Dr. Ir. Antonius, MT

No	Tanggal	Keterangan	Paraf
6.	29 Juli 2020	- Cek Perhitungan Manual - Lengkapi Data Struktur - Buat Tabel Perbandingan Gaya Momen	
7	8 Agustus 2020	- Cek Perhitungan Manual - Ubah Tulangan desain Perhitungan Manual	
8	12 Agustus 2020	- Buat Tabel Perbandingan Jumlah Tulangan Balok	
9.	21 Agustus 2020	- Bisa di seminarikan ujian 26/27	
10.	1 Sept. 20	TA Ace diijel &	



# LEMBAR ASISTENSI



NAMA : Ahmad Ibrohim (30201604357)  
 : Shabri Helmi Bachmar (30201604501)  
 TUGAS : Tugas Akhir  
 DOSEN 2 : Dra. Hj. Nafiah, Msi

No	Tanggal	Keterangan	Paraf
1.	21 Juni 2020	<ul style="list-style-type: none"> <li>- Perbaiki Bab I Papan Pendahuluan dan sistematika</li> <li>- Perbaiki Bab II Tinjauan Pustaka</li> <li>- Perbaiki Bab III Pengumpulan Data Primer dan Sekunder</li> <li>- Perbaiki Bab IV. pembahasan Artikel V kembali Merhitung dengan GFAA</li> <li>- Perbaiki penyusunan sesuai dengan pedoman dari Fakultas</li> </ul>	rw 2
2.	25 Juni 2020	<ul style="list-style-type: none"> <li>- Perbaiki Bab III Gambar di atas bawah porunter dengan gambar atau Tabel</li> <li>- Jangan memisahkan halaman untuk 1 tabel</li> </ul>	rw 2
3.	3 Agustus 2020	<ul style="list-style-type: none"> <li>- Perbaiki Bab IV Hasil pembahasan Jati satu. fi das ada pembahasan. Setelah pembahasan fi Bab IV</li> <li>- Perbaiki Halaman.</li> </ul>	rw 2



# LEMBAR ASISTENSI



NAMA : Ahmad Ibrohim (30201604357)  
: Shabri Helmi Bachtiar (30201604501)  
TUGAS : Tugas Akhir  
DOSEN 2 : Dra. Hj. Nafiah, Msi

No	Tanggal	Keterangan	Paraf
4	12 Agustus 2020	<ul style="list-style-type: none"><li>- Perbaiki sistematika</li><li>- Perbaiki Arah paragraf di bab 3</li><li>- perbaiki daftar pustaka penulisan sesuai Huruf Abjad</li></ul>	
5	25 Agustus 2020	ace.	

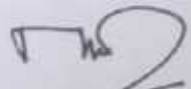
# DESAIN STRUKTUR GEDUNG MENGGUNAKAN TULANGAN GFRP (GLASS FIBER REINFORCED POLIYMER) (Studi Kasus : Proyek Pembangunan Gedung Crisis Center Kulon Progo)

## ORIGINALITY REPORT

<b>11%</b>	<b>10%</b>	<b>1%</b>	<b>6%</b>
SIMILARITY INDEX	INTERNET SOURCES	PUBLICATIONS	STUDENT PAPERS

## PRIMARY SOURCES

<b>1</b>	<b>Submitted to Sultan Agung Islamic University</b> Student Paper	<b>3%</b>
<b>2</b>	<b>www.scribd.com</b> Internet Source	<b>1%</b>
<b>3</b>	<b>repository.its.ac.id</b> Internet Source	<b>1%</b>
<b>4</b>	<b>repository.unhas.ac.id</b> Internet Source	<b>&lt;1%</b>
<b>5</b>	<b>eprints.undip.ac.id</b> Internet Source	<b>&lt;1%</b>
<b>6</b>	<b>www.radyab.co</b> Internet Source	<b>&lt;1%</b>
<b>7</b>	<b>mafiadoc.com</b> Internet Source	<b>&lt;1%</b>
<b>8</b>	<b>es.scribd.com</b> Internet Source	<b>&lt;1%</b>

  
Dra. Hj. Nafiah, Msi