

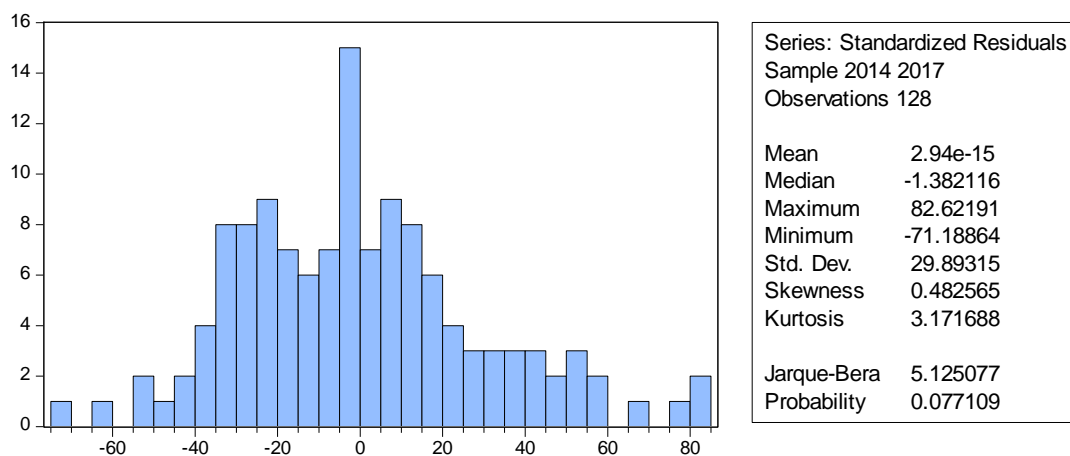
## LAMPIRAN

### Hasil Uji Statistik Deskriptif

	Y2	X1	X2	X3	Y1
Mean	-0.161764	213.6972	13.26589	35.74446	9.372363
Median	-2.357557	172.3050	11.81000	37.54500	7.175678
Maximum	85.27132	971.6900	90.84000	90.82000	110.6197
Minimum	-70.51643	34.55000	-13.12000	0.520000	-41.22932
Std. Dev.	30.79215	147.0563	13.25157	20.82893	20.38915
Skewness	0.467203	2.126327	3.192306	0.228712	1.601895
Kurtosis	2.930724	9.158583	18.37253	2.405252	8.471696
Jarque-Bera Probability	4.682214 0.096221	298.7371 0.000000	1477.749 0.000000	3.002457 0.222856	214.4199 0.000000
Sum	-20.70573	27353.24	1698.035	4575.291	1199.663
Sum Sq. Dev.	120415.9	2746444.	22301.72	55098.25	52796.13
Observations	128	128	128	128	128

### Hasil Uji Asumsi Klasik

#### 1. Uji Normalitas



## 2. Uji Multikolinearitas

Variable	Coefficient Variance	Uncentered VIF	Centered VIF
C	52.59198	7.296045	NA
X1	0.000342	3.187808	1.019016
X2	0.043241	2.100858	1.045175
X3	0.017747	4.205546	1.059818
Y1	0.018332	1.272370	1.048976

## 3. Uji Heteroskedastisitas

F-statistic	1.128886	Prob. F(4,123)	0.3461
Obs*R-squared	4.532700	Prob. Chi-Square(4)	0.3387
Scaled explained SS	4.544799	Prob. Chi-Square(4)	0.3373

Variable	Coefficient	Std. Error	t-Statistic	Prob.
C	581.8397	312.5345	1.861681	0.0650
X1	-0.176116	0.797378	-0.220869	0.8256
X2	3.730930	8.961578	0.416325	0.6779
X3	9.519700	5.741245	1.658125	0.0998
Y1	-5.052699	5.835000	-0.865930	0.3882

R-squared	0.035412	Mean dependent var	886.6191
Adjusted R-squared	0.004043	S.D. dependent var	1311.713
S.E. of regression	1309.059	Akaike info criterion	17.23028
Sum squared resid	2.11E+08	Schwarz criterion	17.34169
Log likelihood	-1097.738	Hannan-Quinn criter.	17.27555
F-statistic	1.128886	Durbin-Watson stat	1.850910
Prob(F-statistic)	0.346068		

### Hasil Regresi Data Panel

#### 1. Uji Chow

Effects Test	Statistic	d.f.	Prob.
Cross-section F	0.628645	(31,92)	0.9281
Cross-section Chi-square	24.592429	31	0.7856

#### 2. Uji Uji Breusch-Pagan LM

	Test Hypothesis		
	Cross-section	Time	Both
Breusch-Pagan	2.059124 (0.1513)	0.673692 (0.4118)	2.732815 (0.0983)

### Hasil Uji

#### 1. Hasil Estimasi Model Common Effect Y1

Variable	Coefficient	Std. Error	t-Statistic	Prob.
C	12.71427	2.591535	4.906076	0.0000
X1	-0.008439	0.007913	-1.066426	0.2883
X2	0.138786	0.073465	1.889138	0.0612
X3	-0.144497	0.051327	-2.815199	0.0057
R-squared	0.094128			
F-statistic	4.294914			
Prob(F-statistic)	0.006402			

## 2. Hasil Estimasi Model Common Effect Y2

Variable	Coefficient	Std. Error	t-Statistic	Prob.
C	-10.49281	4.252500	-2.467446	0.0150
X1	-0.009032	0.006559	-1.377090	0.1710
X2	0.236627	0.164891	1.435049	0.1538
X3	0.209738	0.094007	2.231082	0.0275
Y1	0.226635	0.067893	3.338136	0.0011
R-squared	0.115121			
F-statistic	4.000520			
Prob(F-statistic)	0.004373			

**Hasil Uji Mediasi(Sobel Test)**

Sobel test statistic:	-2.15265855
One-tailed probability:	0.01567276
Two-tailed probability:	0.03134552