


# LAMPIRAN A

## LEMBAR ASISTENSI TUGAS AKHIR




NAMA : M. Khoirun Niam (30201504166)  
Dosen Pembimbing I : Ir. Tri Hardhono, Dipl. HE., MT  
Judul TA : Kajian Laju Angkutan Sedimen  
Pada *Short Cut* Wilalung.

NO	Hari /Tanggal	Keterangan Koreksi
		

## LEMBAR ASISTENSI TUGAS AKHIR

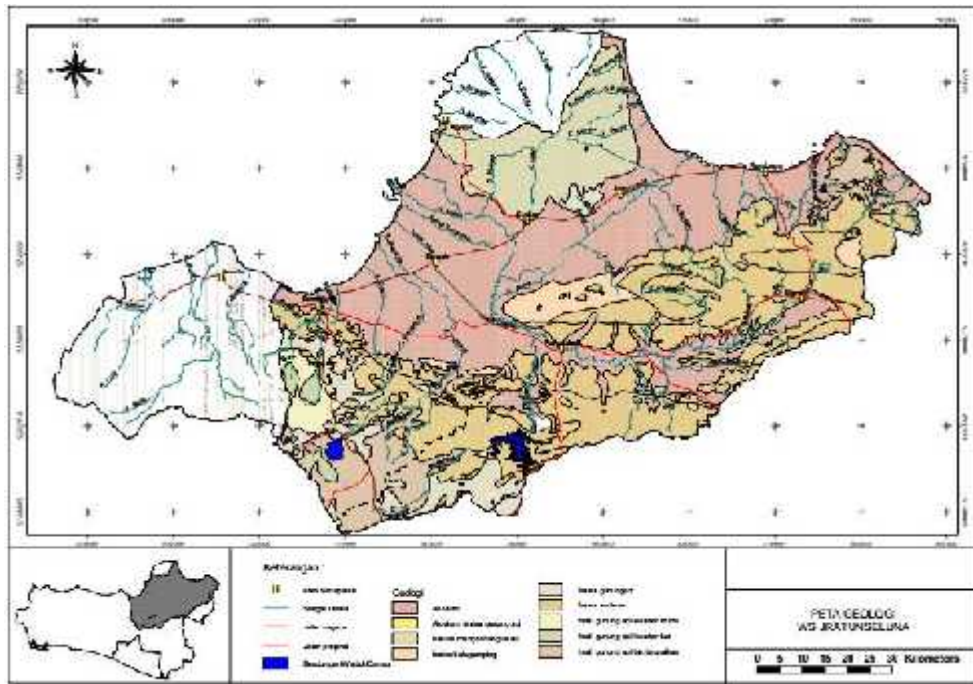


NAMA : M. Khoirun Niam (30201504166)  
Dosen Pembimbing I : Benny Syahputra, ST., MSi  
Judul TA : Kajian Laju Angkutan Sedimen  
Pada *Short Cut* Wilalung.

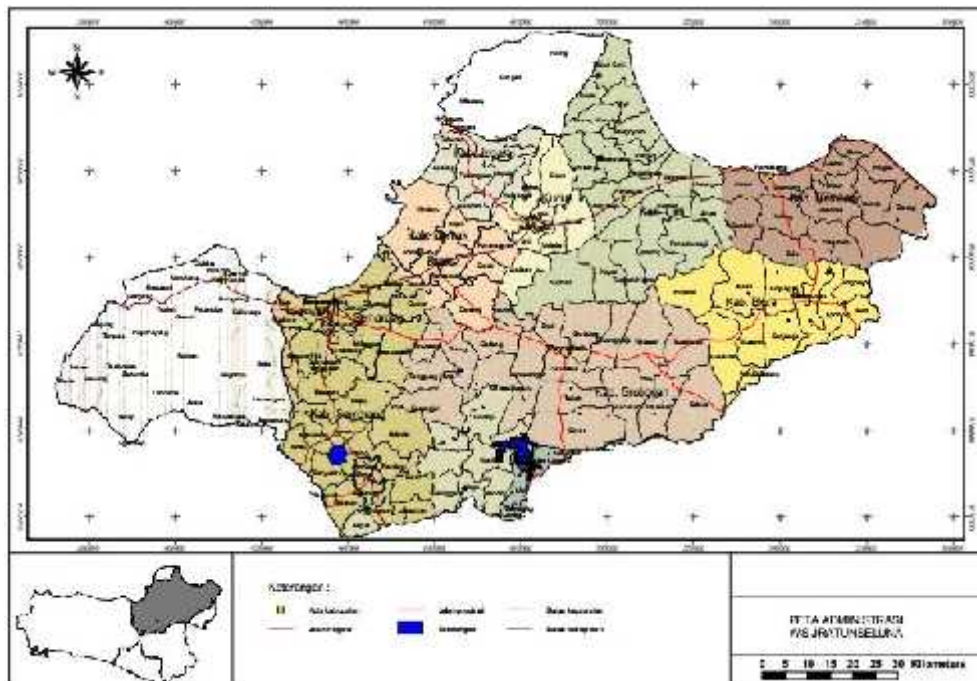
NO	Hari /Tanggal	Keterangan Koreksi
		

# LAMPIRAN B

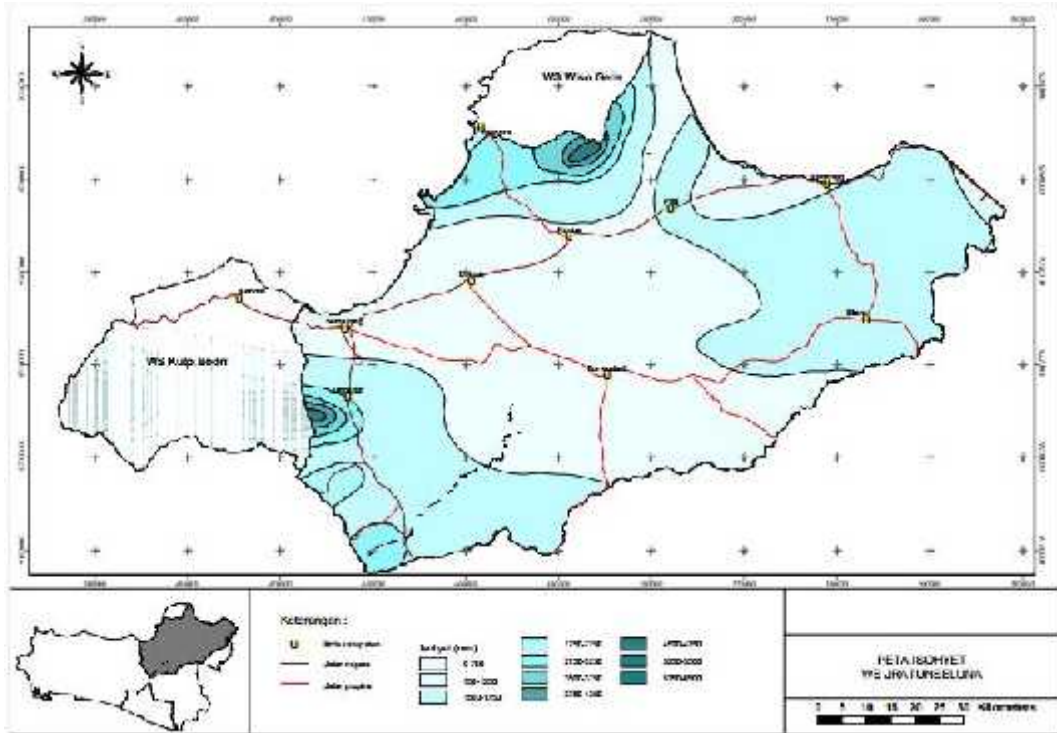
## LAMPIRAN



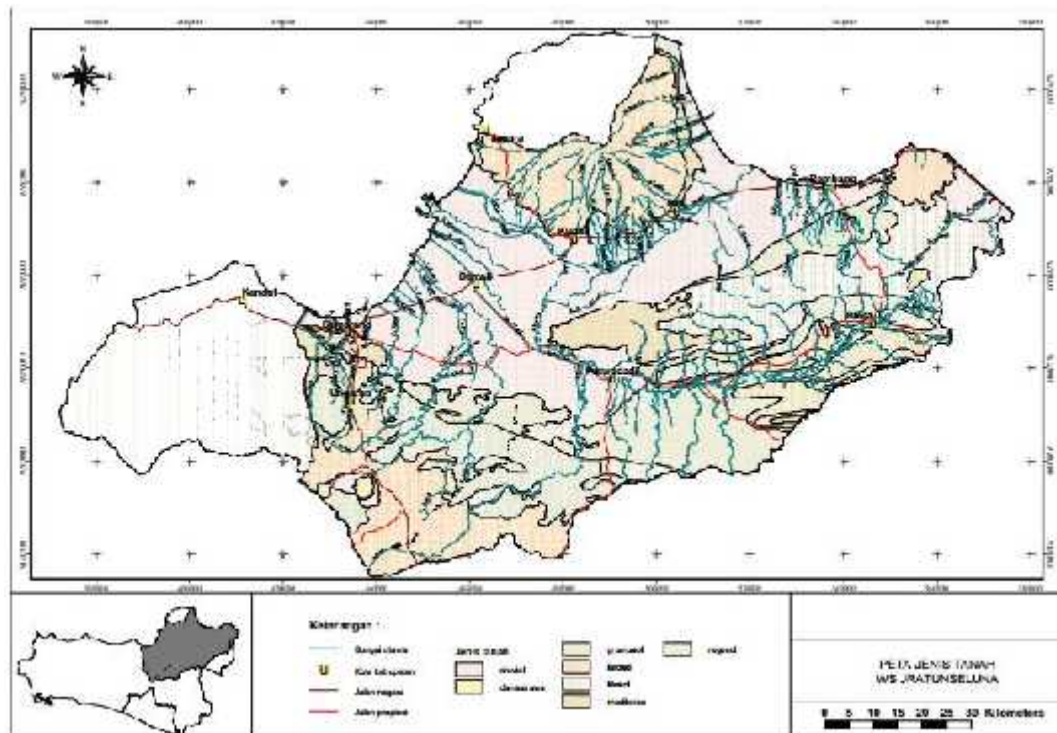
**Peta Geologi WS Jratunseluna**



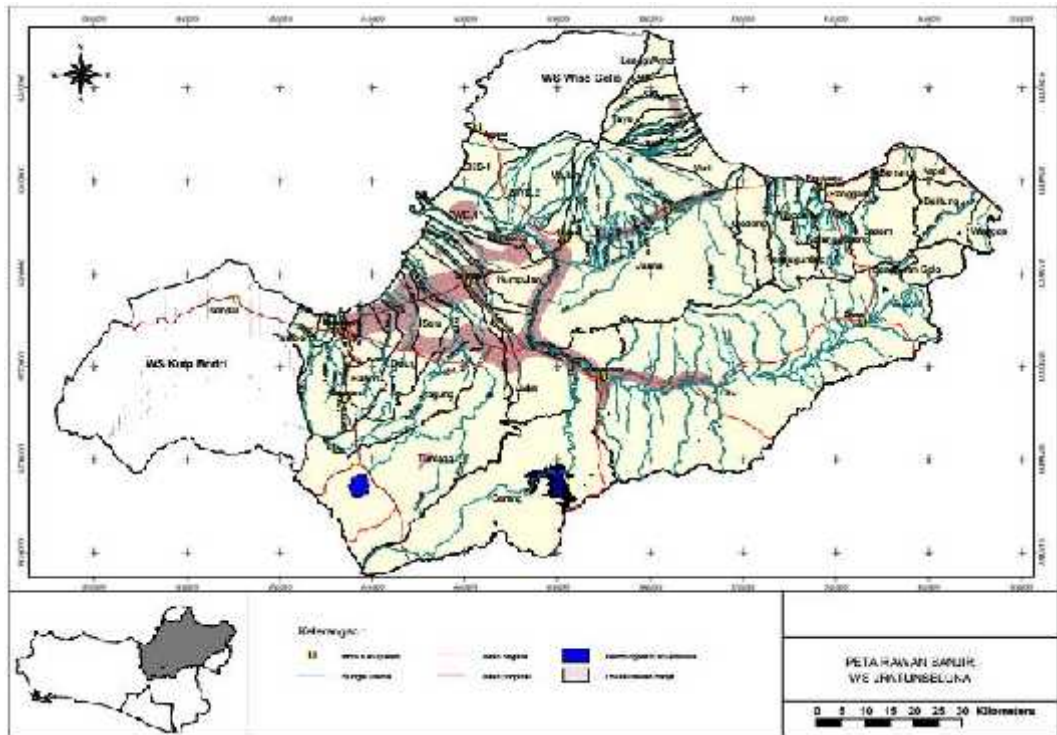
**Peta Administrasi WS Jratunseluna**



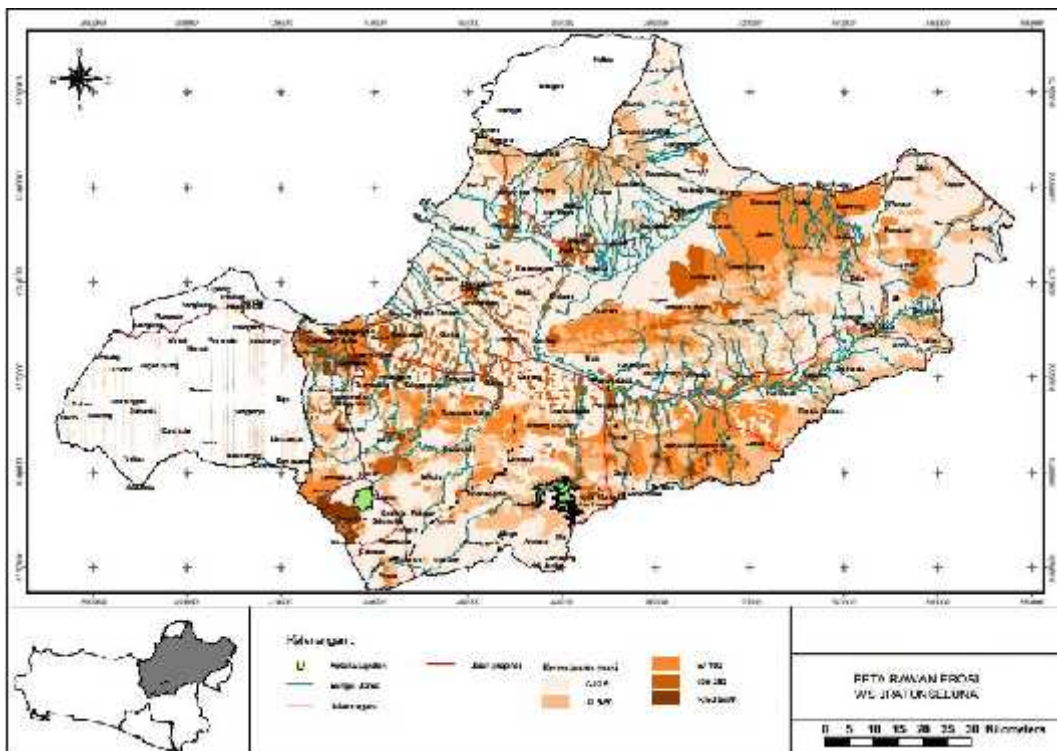
**Peta Isohyet WS Jratunseluna**



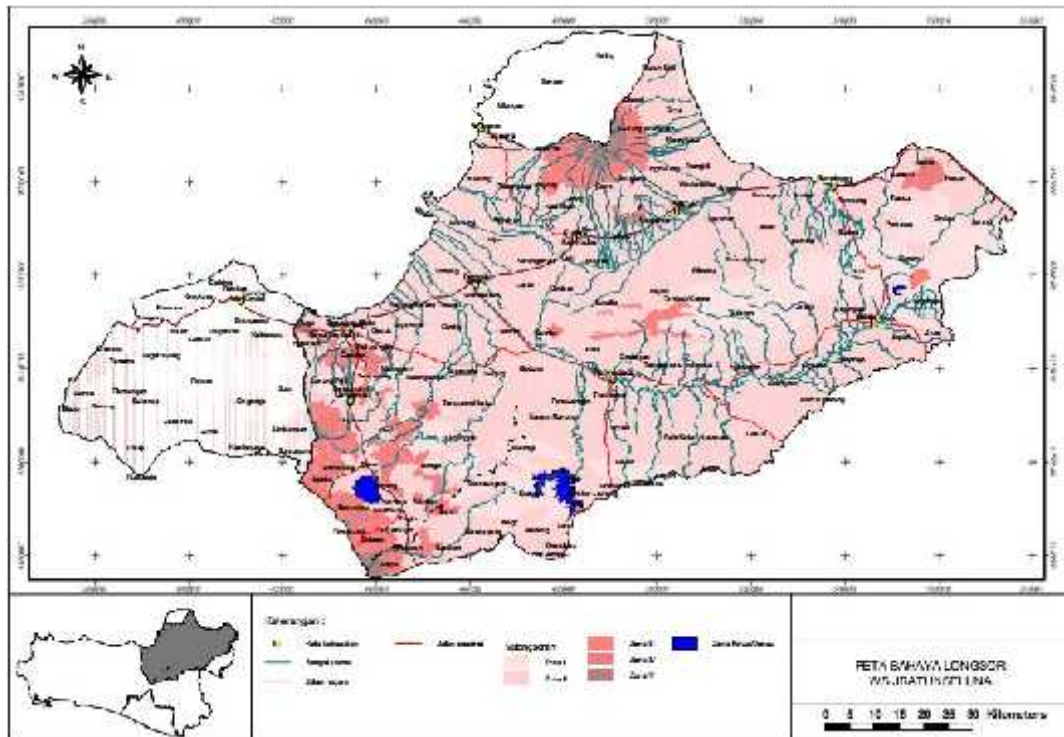
**Peta Jenis Tanah WS Jratunseluna**



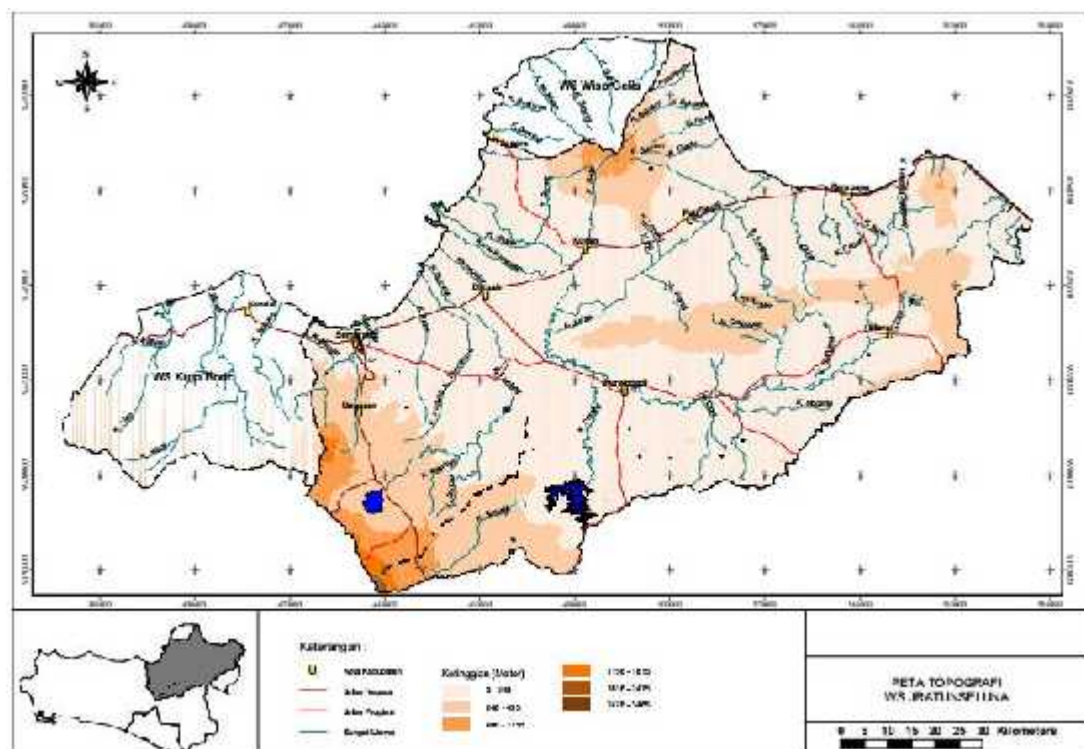
**Peta Rawan Banjir WS Jratunseluna**



**Peta Rawan Erosi WS Jratunseluna**



**Peta Rawan Longsor WS Jratunseluna**



**Peta Topografi WS Jratunseluna**



# LAMPIRAN C

# TA 4166 KAJIAN LAJU ANGKUTAN SEDIMEN PADA SHORT CUT WILALUNG

*by* Ta 4166 Kajian Laju Angkutan  
Sedimen Pada Short Cu

---

**Submission date:** 29-Aug-2019 11:19AM (UTC+0800)

**Submission ID:** 1164665080

**File name:**

TA\_4166\_KAJIAN\_LAJU\_ANGKUTAN\_SEDIMEN\_PADA\_SHORT\_CUT\_WILALUNG.pdf  
(1.61M)

**Word count:** 14230

**Character count:** 83822

# TA 4166 KAJIAN LAJU ANGKUTAN SEDIMEN PADA SHORT CUT WILALUNG

## ORIGINALITY REPORT

16%

SIMILARITY INDEX

16%

INTERNET SOURCES

0%

PUBLICATIONS

13%

STUDENT PAPERS

## PRIMARY SOURCES

1	Submitted to Sultan Agung Islamic University Student Paper	5%
2	eprints.polsri.ac.id Internet Source	4%
3	repository.unhas.ac.id Internet Source	4%
4	www.scribd.com Internet Source	2%
5	annamalichah.wordpress.com Internet Source	2%

Exclude quotes  On

Exclude bibliography  On

Exclude matches  < 2%